

SNAP91 antibody [HL1657]

Cat. No. GTX637255

| | |
|---------------------|------------------------|
| Host | Rabbit |
| Clonality | Monoclonal |
| Isotype | IgG |
| Applications | WB, IHC-P |
| Reactivity | Human, Mouse, Rat, Cat |

Package
100 µl, 25 µl

Applications

Application Note

*Optimal dilutions/concentrations should be determined by the researcher.

| Suggested dilution | Recommended dilution |
|--------------------|----------------------|
| WB | 1:500-1:3000 |
| IHC-P | Assay dependent |

Not tested in other applications.

Observed MW (kDa) 180 kDa.

Properties

| | |
|----------------------|--|
| Form | Liquid |
| Buffer | PBS |
| Preservative | No preservatives |
| Storage | Store as concentrated solution. Centrifuge briefly prior to opening vial. For short-term storage (1-2 weeks), store at 4°C. For long-term storage, aliquot and store at -20°C or below. Avoid multiple freeze-thaw cycles. |
| Concentration | 1 mg/ml (Please refer to the vial label for the specific concentration.) |
| Immunogen | Carrier-protein conjugated synthetic peptide encompassing a sequence within the C-terminus region of mouse SNAP91. The exact sequence is proprietary. |
| Purification | Affinity purified by Protein A. |
| Conjugation | Unconjugated |

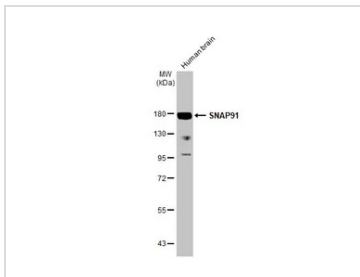
Note

For laboratory research use only. Not for any clinical, therapeutic, or diagnostic use in humans or animals. Not for animal or human consumption.

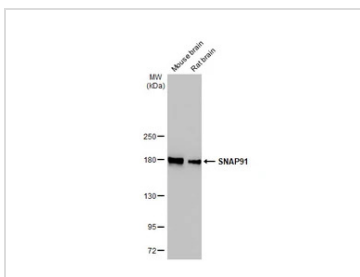
Purchasers shall not, and agree not to enable third parties to, analyze, copy, reverse engineer or otherwise attempt to determine the structure or sequence of the product.



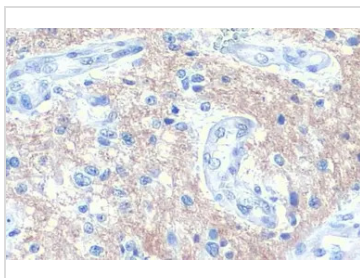
For full product information, images and publications, please visit our [website](#).

DATA IMAGES

GTX637255 WB Image

Human tissue extract (30 µg) was separated by 7.5% SDS-PAGE, and the membrane was blotted with SNAP91 antibody [HL1657] (GTX637255) diluted at 1:1000. The HRP-conjugated anti-rabbit IgG antibody (GTX213110-01) was used to detect the primary antibody.


GTX637255 WB Image

Various tissue extracts (50 µg) were separated by 5% SDS-PAGE, and the membrane was blotted with SNAP91 antibody [HL1657] (GTX637255) diluted at 1:1000. The HRP-conjugated anti-rabbit IgG antibody (GTX213110-01) was used to detect the primary antibody.

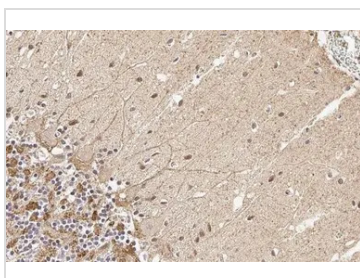

GTX637255 IHC-P Image

SNAP91 antibody [HL1657] detects SNAP91 protein at cytoplasm by immunohistochemical analysis.

Sample: Paraffin-embedded human glioblastoma.

SNAP91 stained by SNAP91 antibody [HL1657] (GTX637255) diluted at 1:100.

Antigen Retrieval: Citrate buffer, pH 6.0, 15 min


GTX637255 IHC-P Image

SNAP91 antibody [HL1657] detects SNAP91 protein at cell membrane and cytoplasm by immunohistochemical analysis.

Sample: Paraffin-embedded cat brain.

SNAP91 stained by SNAP91 antibody [HL1657] (GTX637255) diluted at 1:100.

Antigen Retrieval: Citrate buffer, pH 6.0, 15 min



For full product information, images and publications, please visit our [website](https://www.genetex.com).