

## hnRNP A2B1 antibody [HL1706]

Cat. No. GTX637305

Host	Rabbit
Clonality	Monoclonal
Isotype	IgG
Applications	WB, ICC/IF, IHC-P
Reactivity	Human, Mouse, Rat

Package  
100 µl, 25 µl

## Applications

## Application Note

\*Optimal dilutions/concentrations should be determined by the researcher.

Suggested dilution	Recommended dilution
WB	1:500-1:3000
ICC/IF	Assay dependent
IHC-P	Assay dependent

Not tested in other applications.

Calculated MW 37 kDa. ( [Note](#) )

## Properties

Form	Liquid
Buffer	PBS
Preservative	No preservatives
Storage	Store as concentrated solution. Centrifuge briefly prior to opening vial. For short-term storage (1-2 weeks), store at 4°C. For long-term storage, aliquot and store at -20°C or below. Avoid multiple freeze-thaw cycles.
Concentration	1 mg/ml (Please refer to the vial label for the specific concentration.)
Immunogen	Recombinant protein encompassing a sequence within the center region of human hnRNP A2B1. The exact sequence is proprietary.
Purification	Affinity purified by Protein A.
Conjugation	Unconjugated

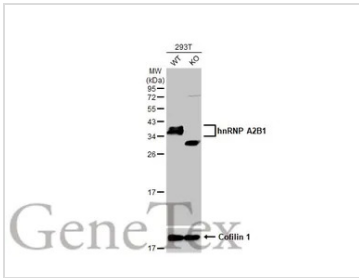
## Note

For laboratory research use only. Not for any clinical, therapeutic, or diagnostic use in humans or animals. Not for animal or human consumption.

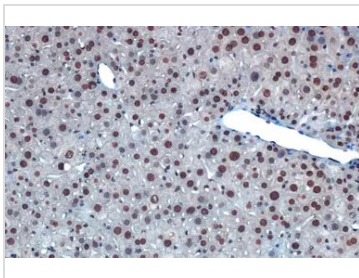
Purchasers shall not, and agree not to enable third parties to, analyze, copy, reverse engineer or otherwise attempt to determine the structure or sequence of the product.



For full product information, images and publications, please visit our [website](#).

**DATA IMAGES**

**GTX637305 WB Image**

Wild-type (WT) and HNRNPA2B1 knockout (KO) 293T cell extracts (30 µg) were separated by 12% SDS-PAGE, and the membrane was blotted with hnRNP A2B1 antibody [HL1706] (GTX637305) diluted at 1:1000. The HRP-conjugated anti-rabbit IgG antibody (GTX213110-01) was used to detect the primary antibody.

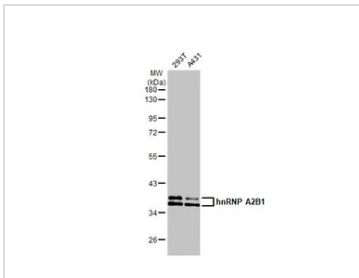

**GTX637305 IHC-P Image**

hnRNP A2B1 antibody [HL1706] detects hnRNP A2B1 protein at cytoplasm and nucleus by immunohistochemical analysis.

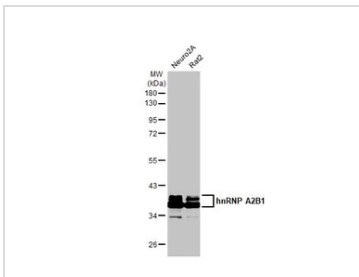
Sample: Paraffin-embedded mouse liver.

hnRNP A2B1 stained by hnRNP A2B1 antibody [HL1706] (GTX637305) diluted at 1:100.

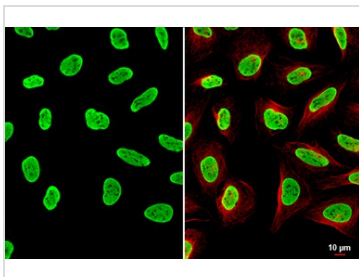
Antigen Retrieval: Citrate buffer, pH 6.0, 15 min


**GTX637305 WB Image**

Various whole cell extracts (30 µg) were separated by 10% SDS-PAGE, and the membrane was blotted with hnRNP A2B1 antibody [HL1706] (GTX637305) diluted at 1:100000. The HRP-conjugated anti-rabbit IgG antibody (GTX213110-01) was used to detect the primary antibody.


**GTX637305 WB Image**

Various whole cell extracts (30 µg) were separated by 10% SDS-PAGE, and the membrane was blotted with hnRNP A2B1 antibody [HL1706] (GTX637305) diluted at 1:10000. The HRP-conjugated anti-rabbit IgG antibody (GTX213110-01) was used to detect the primary antibody.


**GTX637305 ICC/IF Image**

hnRNP A2B1 antibody [HL1706] detects hnRNP A2B1 protein by immunofluorescent analysis.

Sample: U2OS cells were fixed in 4% paraformaldehyde at RT for 15 min.

Green: hnRNP A2B1 stained by hnRNP A2B1 antibody [HL1706] (GTX637305) diluted at 1:500.

Red: alpha Tubulin, a cytoskeleton marker, stained by alpha Tubulin antibody [GT114] (GTX628802) diluted at 1:1000.



For full product information, images and publications, please visit our [website](https://www.genetex.com).