

beta Tubulin 3/ Tuj1 antibody [HL1708]

Cat. No. GTX637307

Host	Rabbit
Clonality	Monoclonal
Isotype	IgG
Applications	WB, ICC/IF
Reactivity	Human, Mouse, Rat

Package
100 µl, 25 µl

Applications

Application Note

*Optimal dilutions/concentrations should be determined by the researcher.

Suggested dilution	Recommended dilution
WB	1:500-1:3000
ICC/IF	Assay dependent

Not tested in other applications.

Observed MW (kDa) 50, 55 kDa.

Properties

Form	Liquid
Buffer	PBS
Preservative	No preservatives
Storage	Store as concentrated solution. Centrifuge briefly prior to opening vial. For short-term storage (1-2 weeks), store at 4°C. For long-term storage, aliquot and store at -20°C or below. Avoid multiple freeze-thaw cycles.
Concentration	1 mg/ml (Please refer to the vial label for the specific concentration.)
Immunogen	Synthetic peptide of human beta Tubulin 3/ Tuj1
Purification	Affinity purified by Protein A.
Conjugation	Unconjugated

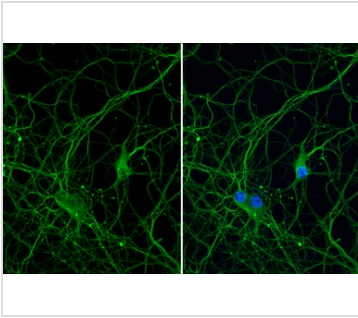
Note

For laboratory research use only. Not for any clinical, therapeutic, or diagnostic use in humans or animals. Not for animal or human consumption.

Purchasers shall not, and agree not to enable third parties to, analyze, copy, reverse engineer or otherwise attempt to determine the structure or sequence of the product.



For full product information, images and publications, please visit our [website](#).

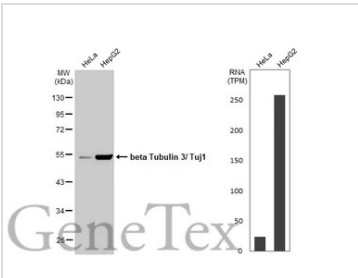
DATA IMAGES

GTX637307 ICC/IF Image

beta Tubulin 3/ Tuj1 antibody [HL1708] detects beta Tubulin 3/ Tuj1 protein at cytoskeleton by immunofluorescent analysis.

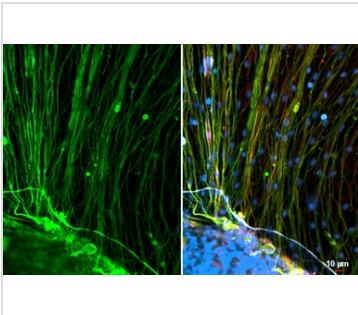
Sample: DIV9 rat E18 primary hippocampal neuron cells were fixed in 4% paraformaldehyde at RT for 15 min.

Green: beta Tubulin 3/ Tuj1 stained by beta Tubulin 3/ Tuj1 antibody [HL1708] (GTX637307) diluted at 1:250.

Blue: Fluoroshield with DAPI (GTX30920).


GTX637307 WB Image

Various whole cell extracts (30 µg) were separated by 10% SDS-PAGE, and the membrane was blotted with beta Tubulin 3/ Tuj1 antibody [HL1708] (GTX637307) diluted at 1:10000. The HRP-conjugated anti-rabbit IgG antibody (GTX213110-01) was used to detect the primary antibody. Corresponding RNA expression data for the same cell lines are based on Human Protein Atlas program.


GTX637307 ICC/IF Image

beta Tubulin 3/ Tuj1 antibody [HL1708] detects beta Tubulin 3/ Tuj1 protein at cytoskeleton by immunofluorescent analysis.

Sample: mouse dorsal root ganglia cells were fixed in 4% paraformaldehyde at RT for 15 min.

Green: beta Tubulin 3/ Tuj1 stained by beta Tubulin 3/ Tuj1 antibody [HL1708] (GTX637307) diluted at 1:500.

Red: NF-H, an axon marker, stained by NF-H antibody [GT114] (GTX634289) diluted at 1:500.

Blue: Fluoroshield with DAPI (GTX30920).



For full product information, images and publications, please visit our [website](https://www.genetex.com).