

## beta Tubulin 3/ Tuj1 antibody [HL1709]

**Cat. No. GTX637308**

<b>Host</b>	Rabbit
<b>Clonality</b>	Monoclonal
<b>Isotype</b>	IgG
<b>Applications</b>	WB, ICC/IF, IHC-P
<b>Reactivity</b>	Human, Mouse, Rat, Drosophila

★★★★★ Review ( 1 )

Package  
100 µl, 25 µl

## Applications

**Application Note**

\*Optimal dilutions/concentrations should be determined by the researcher.

Suggested dilution	Recommended dilution
WB	1:500-1:3000
ICC/IF	Assay dependent
IHC-P	Assay dependent

Not tested in other applications.

**Observed MW (kDa)** 50, 55 kDa.

## Properties

<b>Form</b>	Liquid
<b>Buffer</b>	PBS
<b>Preservative</b>	No preservatives
<b>Storage</b>	Store as concentrated solution. Centrifuge briefly prior to opening vial. For short-term storage (1-2 weeks), store at 4°C. For long-term storage, aliquot and store at -20°C or below. Avoid multiple freeze-thaw cycles.
<b>Concentration</b>	1 mg/ml (Please refer to the vial label for the specific concentration.)
<b>Immunogen</b>	Synthetic peptide of human beta Tubulin 3/ Tuj1
<b>Purification</b>	Affinity purified by Protein A.
<b>Conjugation</b>	Unconjugated

**Note**

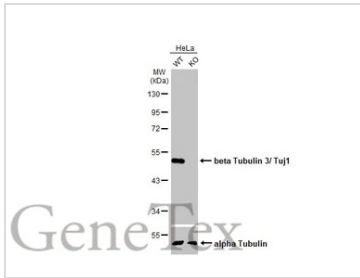
For laboratory research use only. Not for any clinical, therapeutic, or diagnostic use in humans or animals. Not for animal or human consumption.

Purchasers shall not, and agree not to enable third parties to, analyze, copy, reverse engineer or otherwise attempt to determine the structure or sequence of the product.

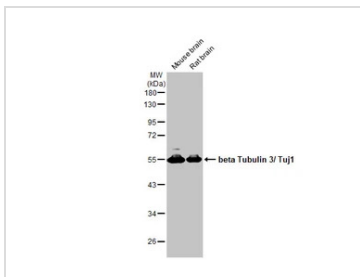


For full product information, images and publications, please visit our [website](#).

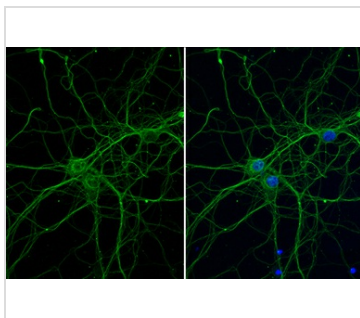
## DATA IMAGES

**GTX637308 WB Image**

Wild-type (WT) and beta Tubulin 3/ Tuj1 knockout (KO) HeLa cell extracts (10  $\mu$ g) were separated by 10% SDS-PAGE, and the membrane was blotted with beta Tubulin 3/ Tuj1 antibody [HL1709] (GTX637308) diluted at 1:4000. The HRP-conjugated anti-rabbit IgG antibody (GTX213110-01) was used to detect the primary antibody, and the signal was developed with Trident ECL plus-Enhanced.

**GTX637308 WB Image**

Various tissue extracts (50  $\mu$ g) were separated by 10% SDS-PAGE, and the membrane was blotted with beta Tubulin 3/ Tuj1 antibody [HL1709] (GTX637308) diluted at 1:1000. The HRP-conjugated anti-rabbit IgG antibody (GTX213110-01) was used to detect the primary antibody.

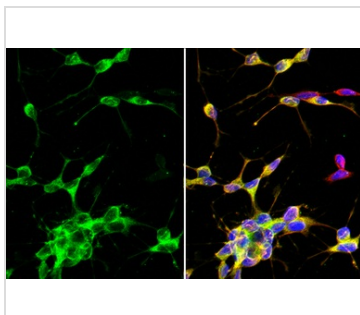
**GTX637308 ICC/IF Image**

beta Tubulin 3/ Tuj1 antibody [HL1709] detects beta Tubulin 3/ Tuj1 protein by immunofluorescent analysis.

Sample: DIV9 rat E18 primary hippocampal neuron cells were fixed in 4% paraformaldehyde at RT for 15 min.

Green: beta Tubulin 3/ Tuj1 stained by beta Tubulin 3/ Tuj1 antibody [HL1709] (GTX637308) diluted at 1:250.

Blue: Fluoroshield with DAPI (GTX30920).

**GTX637308 ICC/IF Image**

beta Tubulin 3/ Tuj1 antibody [HL1709] detects beta Tubulin 3/ Tuj1 protein by immunofluorescent analysis.

Sample: SH-SY-5Y cells were fixed in ice-cold MeOH for 10 min.

Green: beta Tubulin 3/ Tuj1 stained by beta Tubulin 3/ Tuj1 antibody [HL1709] (GTX637308) diluted at 1:500.

Red: alpha Tubulin stained by alpha Tubulin antibody [GT114] (GTX628802) diluted at 1:1000.

Blue: Fluoroshield with DAPI (GTX30920).



For full product information, images and publications, please visit our [website](https://www.genetex.com).