

Influenza A virus PB1 protein antibody [HL1715]

Cat. No. GTX637314

Host	Rabbit
Clonality	Monoclonal
Isotype	IgG
Applications	WB, IHC-P (cell pellet)
Reactivity	Influenza A virus

Package
100 µl, 25 µl

Applications

Application Note

*Optimal dilutions/concentrations should be determined by the researcher.

Suggested dilution	Recommended dilution
WB	1:1000-1:10000
IHC-P (cell pellet)	Assay dependent

Not tested in other applications.

Properties

Form	Liquid
Buffer	PBS
Preservative	No preservatives
Storage	Store as concentrated solution. Centrifuge briefly prior to opening vial. For short-term storage (1-2 weeks), store at 4°C. For long-term storage, aliquot and store at -20°C or below. Avoid multiple freeze-thaw cycles.
Concentration	1 mg/ml (Please refer to the vial label for the specific concentration.)
Immunogen	Recombinant protein encompassing a sequence within the center region of Influenza A virus PB1 protein. (Influenza A virus (A/Puerto Rico/8/1934(H1N1))
Purification	Affinity purified by Protein A.
Conjugation	Unconjugated

Note

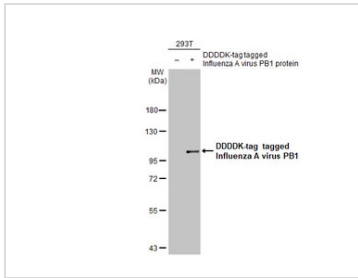
For laboratory research use only. Not for any clinical, therapeutic, or diagnostic use in humans or animals. Not for animal or human consumption.

Purchasers shall not, and agree not to enable third parties to, analyze, copy, reverse engineer or otherwise attempt to determine the structure or sequence of the product.



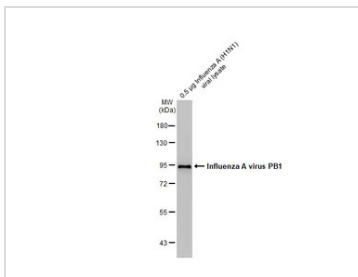
For full product information, images and publications, please visit our [website](#).

DATA IMAGES



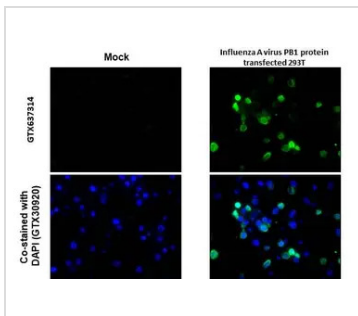
GTX637314 WB Image

Non-transfected (–) and transfected (+) 293T whole cell extracts (30 µg) were separated by 7.5% SDS-PAGE, and the membrane was blotted with Influenza A virus PB1 protein antibody [HL1715] (GTX637314) diluted at 1:5000. The HRP-conjugated anti-rabbit IgG antibody (GTX213110-01) was used to detect the primary antibody.



GTX637314 WB Image

Influenza A (H1N1) viral lysate (0.5 µg) was separated by 7.5% SDS-PAGE, and the membrane was blotted with Influenza A virus PB1 protein antibody [HL1715] (GTX637314) diluted at 1:5000. The HRP-conjugated anti-rabbit IgG antibody (GTX213110-01) was used to detect the primary antibody.



GTX637314 IHC-P (cell pellet) Image

Influenza A virus PB1 protein antibody [HL1715] detects Influenza A virus PB1 protein protein by immunohistochemical analysis.

Sample: Paraffin-embedded mock and Influenza A virus PB1 protein transfected 293T.

Green: Influenza A virus PB1 protein stained by Influenza A virus PB1 protein antibody [HL1715] (GTX637314) diluted at 1:1000.

Blue: Fluoroshield with DAPI (GTX30920).

Antigen Retrieval: Citrate buffer, pH 6.0, 15 min



For full product information, images and publications, please visit our [website](https://www.genetex.com).