

SARS-CoV-2 (COVID-19) ORF3a antibody [HL1722]

Cat. No. GTX637321

Host	Rabbit
Clonality	Monoclonal
Isotype	IgG
Applications	WB, ICC/IF, IHC-P (cell pellet)
Reactivity	SARS Coronavirus 2

Package
100 µl, 25 µl

Applications

Application Note

*Optimal dilutions/concentrations should be determined by the researcher.

Suggested dilution	Recommended dilution
WB	1:1000-1:10000
ICC/IF	Assay dependent
IHC-P (cell pellet)	Assay dependent

Not tested in other applications.

Properties

Form	Liquid
Buffer	PBS
Preservative	No preservative
Storage	Store as concentrated solution. Centrifuge briefly prior to opening vial. For short-term storage (1-2 weeks), store at 4°C. For long-term storage, aliquot and store at -20°C or below. Avoid multiple freeze-thaw cycles.
Concentration	1 mg/ml (Please refer to the vial label for the specific concentration.)
Immunogen	Recombinant protein encompassing a sequence within the center region of SARS-CoV-2 (COVID-19) ORF3a. (Strain:Wuhan-hu-1)
Purification	Affinity purified by Protein A.
Conjugation	Unconjugated

Note

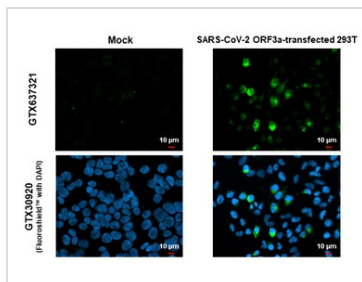
For laboratory research use only. Not for any clinical, therapeutic, or diagnostic use in humans or animals. Not for animal or human consumption.

Purchasers shall not, and agree not to enable third parties to, analyze, copy, reverse engineer or otherwise attempt to determine the structure or sequence of the product.



For full product information, images and publications, please visit our [website](#).

DATA IMAGES



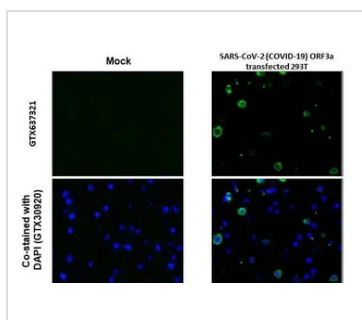
GTx637321 ICC/IF Image

SARS-CoV-2 (COVID-19) ORF3a antibody [HL1722] detects SARS-CoV-2 (COVID-19) ORF3a protein by immunofluorescent analysis.

Sample: Mock and transfected 293T cells were fixed in 4% paraformaldehyde at RT for 15 min.

Green: SARS-CoV-2 (COVID-19) ORF3a stained by SARS-CoV-2 (COVID-19) ORF3a antibody [HL1722] (GTx637321) diluted at 1:500.

Blue: Fluoroshield with DAPI (GTx30920).



GTx637321 IHC-P (cell pellet) Image

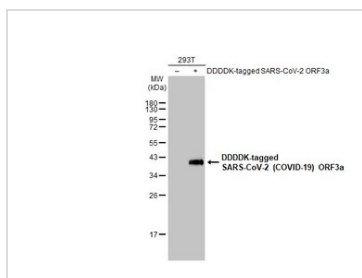
SARS-CoV-2 (COVID-19) ORF3a antibody [HL1722] detects SARS-CoV-2 (COVID-19) ORF3a protein by immunohistochemical analysis.

Sample: Paraffin-embedded mock and SARS-CoV-2 (COVID-19) ORF3a transfected 293T.

Green: SARS-CoV-2 (COVID-19) ORF3a stained by SARS-CoV-2 (COVID-19) ORF3a antibody [HL1722] (GTx637321) diluted at 1:1000.

Blue: Fluoroshield with DAPI (GTx30920).

Antigen Retrieval: Citrate buffer, pH 6.0, 15 min



GTx637321 WB Image

Non-transfected (-) and transfected (+) 293T whole cell extracts (30 μg) were separated by 12% SDS-PAGE, and the membrane was blotted with SARS-CoV-2 (COVID-19) ORF3a antibody [HL1722] (GTx637321) diluted at 1:5000. The HRP-conjugated anti-rabbit IgG antibody (GTx213110-01) was used to detect the primary antibody.



For full product information, images and publications, please visit our [website](https://www.genetex.com).