

MUC2 antibody [HL1724]

Cat. No. GTX637372

Host	Rabbit
Clonality	Monoclonal
Isotype	IgG
Applications	WB, ICC/IF, IHC-P
Reactivity	Human, Mouse, Rat

References (2)

Package

100 µl, 25 µl

Applications

Application Note

*Optimal dilutions/concentrations should be determined by the researcher.

Suggested dilution	Recommended dilution
WB	1:1000-1:10000
ICC/IF	Assay dependent
IHC-P	1:100-1:1000

Not tested in other applications.

Observed MW (kDa) 540 kDa.

Properties

Form	Liquid
Buffer	PBS
Preservative	No preservatives
Storage	Store as concentrated solution. Centrifuge briefly prior to opening vial. For short-term storage (1-2 weeks), store at 4°C. For long-term storage, aliquot and store at -20°C or below. Avoid multiple freeze-thaw cycles.
Concentration	1 mg/ml (Please refer to the vial label for the specific concentration.)
Immunogen	Synthetic peptide of human MUC2.
Purification	Affinity purified by Protein A.
Conjugation	Unconjugated

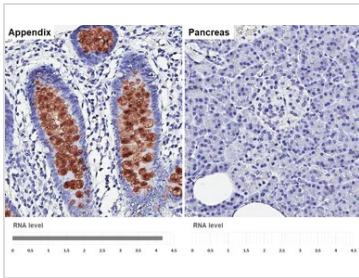
Note

For laboratory research use only. Not for any clinical, therapeutic, or diagnostic use in humans or animals. Not for animal or human consumption.

Purchasers shall not, and agree not to enable third parties to, analyze, copy, reverse engineer or otherwise attempt to determine the structure or sequence of the product.



For full product information, images and publications, please visit our [website](#).

DATA IMAGES

GTx637372 IHC-P Image

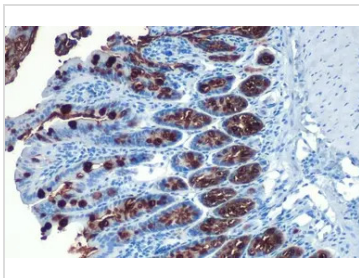
MUC2 antibody [HL1724] detects MUC2 protein by immunohistochemical analysis.

Sample: Paraffin-embedded human tissues.

MUC2 stained by MUC2 antibody [HL1724] (GTx637372) diluted at 1:4000.

Antigen Retrieval: Citrate buffer, pH 6.0, 15 min

Corresponding RNA levels (RPKM) in the tissues are based on NCBI database.

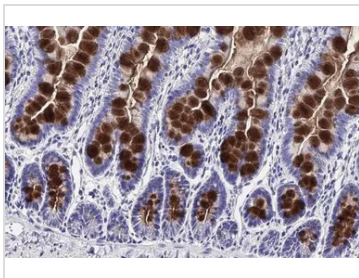

GTx637372 IHC-P Image

MUC2 antibody [HL1724] detects MUC2 protein at nucleus by immunohistochemical analysis.

Sample: Paraffin-embedded mouse intestine.

MUC2 stained by MUC2 antibody [HL1724] (GTx637372) diluted at 1:100.

Antigen Retrieval: Citrate buffer, pH 6.0, 15 min

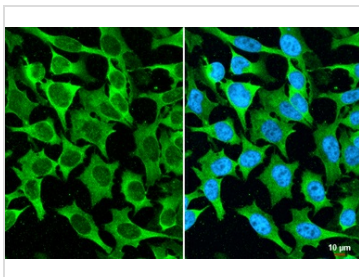

GTx637372 IHC-P Image

MUC2 antibody [HL1724] detects secreted MUC2 protein by immunohistochemical analysis.

Sample: Paraffin-embedded rat colon.

MUC2 stained by MUC2 antibody [HL1724] (GTx637372) diluted at 1:100.

Antigen Retrieval: Citrate buffer, pH 6.0, 15 min


GTx637372 ICC/IF Image

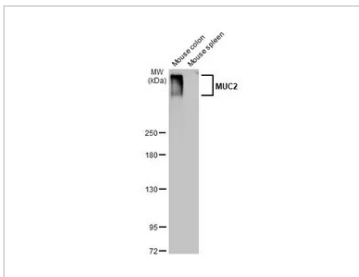
MUC2 antibody [HL1724] detects MUC2 protein by immunofluorescent analysis.

Sample: HeLa cells were fixed in 4% paraformaldehyde at RT for 15 min.

Green: MUC2 stained by MUC2 antibody [HL1724] (GTx637372) diluted at 1:500.

Blue: Fluoroshield with DAPI (GTx30920).

Scale bar= 10μm.


GTx637372 WB Image

Various tissue extracts (50 μg) were separated by 5% SDS-PAGE, and the membrane was blotted with MUC2 antibody [HL1724] (GTx637372) diluted at 1:5000. The HRP-conjugated anti-rabbit IgG antibody (GTx213110-01) was used to detect the primary antibody.



For full product information, images and publications, please visit our [website](https://www.genetex.com).