

## TREM2 antibody [HL1738]

Cat. No. GTX637386

Host	Rabbit
Clonality	Monoclonal
Isotype	IgG
Applications	WB, ICC/IF, IHC-P, ELISA, Sandwich ELISA
Reactivity	Human

Package  
100 µl, 25 µl

## Applications

## Application Note

\*Optimal dilutions/concentrations should be determined by the researcher.

Suggested dilution	Recommended dilution
WB	1:500-1:3000
ICC/IF	Assay dependent
IHC-P	Assay dependent
ELISA	Assay dependent
Sandwich ELISA	Assay dependent

**Note : Capture : GTX637387, Detection : GTX637386 or Capture : GTX637386, Detection : GTX637387**  
**The detection antibody requires HRP conjugation. Please contact us for the conjugation service.**

Not tested in other applications.

**Observed MW (kDa)** 28 kDa.

## Properties

Form	Liquid
Buffer	PBS
Preservative	No preservatives
Storage	Store as concentrated solution. Centrifuge briefly prior to opening vial. For short-term storage (1-2 weeks), store at 4°C. For long-term storage, aliquot and store at -20°C or below. Avoid multiple freeze-thaw cycles.
Concentration	2 mg/ml (Please refer to the vial label for the specific concentration.)
Immunogen	full length human TREM2 recombinant protein.
Purification	Affinity purified by Protein A.
Conjugation	Unconjugated

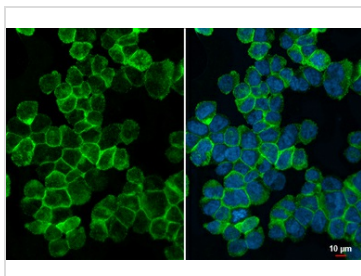


For full product information, images and publications, please visit our [website](#).

For laboratory research use only. Not for any clinical, therapeutic, or diagnostic use in humans or animals. Not for animal or human consumption.

**Note**

Purchasers shall not, and agree not to enable third parties to, analyze, copy, reverse engineer or otherwise attempt to determine the structure or sequence of the product.

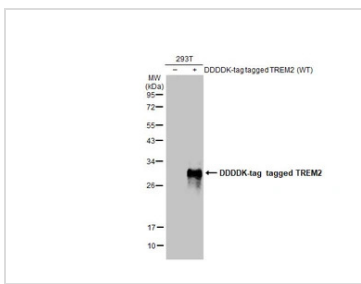
**DATA IMAGES**

**GTx637386 ICC/IF Image**

TREM2 antibody [HL1738] detects TREM2 protein at cell membrane and cytoplasm by immunofluorescent analysis.

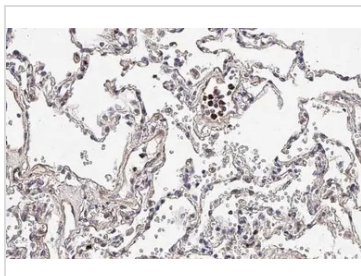
Sample: THP-1 cells were fixed in 4% paraformaldehyde at RT for 15 min.

Green: TREM2 stained by TREM2 antibody [HL1738] (GTx637386) diluted at 1:250.

Blue: Fluoroshield with DAPI (GTx30920).


**GTx637386 WB Image**

Non-transfected (–) and transfected (+) 293T whole cell extracts (30 µg) were separated by 12% SDS-PAGE, and the membrane was blotted with TREM2 antibody [HL1738] (GTx637386) diluted at 1:500. The HRP-conjugated anti-rabbit IgG antibody (GTx213110-01) was used to detect the primary antibody.

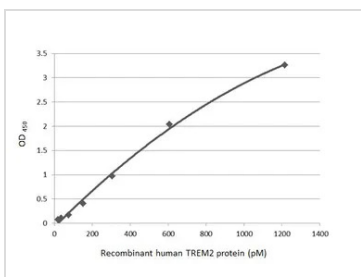

**GTx637386 IHC-P Image**

TREM2 antibody [HL1738] detects TREM2 protein at cell membrane by immunohistochemical analysis.

Sample: Paraffin-embedded human lung cancer.

TREM2 stained by TREM2 antibody [HL1738] (GTx637386) diluted at 1:200.

Antigen Retrieval: Citrate buffer, pH 6.0, 15 min


**GTx637386 ELISA Image**

Indirect ELISA analysis was performed by coating the plate with recombinant E.coli expressed, full-length human TREM2 protein (1215.95-19.07 pM). Coated protein was probed with TREM2 antibody [HL1738] (GTx637386) (1 µg/mL). Goat anti-rabbit IgG antibody (HRP) (GTx213110-01) (1:10000) was used to detect the bound primary antibody.



For full product information, images and publications, please visit our [website](https://www.genetex.com).