

C/EBP alpha antibody [HL1747]

Cat. No. GTX637397

Host	Rabbit
Clonality	Monoclonal
Isotype	IgG
Applications	WB, ICC/IF
Reactivity	Human, Rat

Package
100 µl, 25 µl

Applications

Application Note

*Optimal dilutions/concentrations should be determined by the researcher.

Suggested dilution	Recommended dilution
WB	1:500-1:3000
ICC/IF	Assay dependent

Not tested in other applications.

Observed MW (kDa) 45, 48 kDa.

Properties

Form	Liquid
Buffer	PBS
Preservative	No preservatives
Storage	Store as concentrated solution. Centrifuge briefly prior to opening vial. For short-term storage (1-2 weeks), store at 4°C. For long-term storage, aliquot and store at -20°C or below. Avoid multiple freeze-thaw cycles.
Concentration	1 mg/ml (Please refer to the vial label for the specific concentration.)
Immunogen	Carrier-protein conjugated synthetic peptide encompassing a sequence within the N-terminus region of human C/EBP alpha. The exact sequence is proprietary.
Purification	Affinity purified by Protein A.
Conjugation	Unconjugated

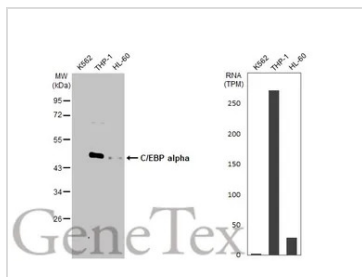
Note

For laboratory research use only. Not for any clinical, therapeutic, or diagnostic use in humans or animals. Not for animal or human consumption.

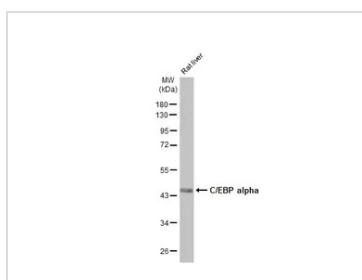
Purchasers shall not, and agree not to enable third parties to, analyze, copy, reverse engineer or otherwise attempt to determine the structure or sequence of the product.



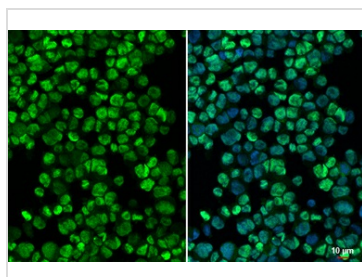
For full product information, images and publications, please visit our [website](#).

DATA IMAGES

GTX637397 WB Image

Various whole cell extracts (30 µg) were separated by 10% SDS-PAGE, and the membrane was blotted with C/EBP alpha antibody [HL1747] (GTX637397) diluted at 1:1000. The HRP-conjugated anti-rabbit IgG antibody (GTX213110-01) was used to detect the primary antibody. Corresponding RNA expression data for the same cell lines are based on Human Protein Atlas program.


GTX637397 WB Image

Rat tissue extract (50 µg) was separated by 10% SDS-PAGE, and the membrane was blotted with C/EBP alpha antibody [HL1747] (GTX637397) diluted at 1:1000. The HRP-conjugated anti-rabbit IgG antibody (GTX213110-01) was used to detect the primary antibody, and the signal was developed with Trident femto Western HRP Substrate.


GTX637397 ICC/IF Image

C/EBP alpha antibody [HL1747] detects C/EBP alpha protein at nucleus by immunofluorescent analysis.

Sample: THP-1 cells were fixed in ice-cold MeOH for 5 min.

Green: C/EBP alpha stained by C/EBP alpha antibody [HL1747] (GTX637397) diluted at 1:500.

Blue: Fluoroshield with DAPI (GTX30920).



For full product information, images and publications, please visit our [website](https://www.genetex.com).