

## beta Catenin antibody [HL1753]

**Cat. No. GTX637403**

|                     |                        |
|---------------------|------------------------|
| <b>Host</b>         | Rabbit                 |
| <b>Clonality</b>    | Monoclonal             |
| <b>Isotype</b>      | IgG                    |
| <b>Applications</b> | WB, ICC/IF, IHC-P      |
| <b>Reactivity</b>   | Human, Mouse, Cat, Dog |

**Package**  
100 µl, 25 µl

## Applications

**Application Note**

\*Optimal dilutions/concentrations should be determined by the researcher.

| Suggested dilution | Recommended dilution |
|--------------------|----------------------|
| WB                 | 1:500-1:3000         |
| ICC/IF             | Assay dependent      |
| IHC-P              | Assay dependent      |

Not tested in other applications.

**Observed MW (kDa)** 92 kDa.

## Properties

|                      |  |
|----------------------|--|
| <b>Form</b>          | Liquid   |
| <b>Buffer</b>        | PBS  |
| <b>Preservative</b>  | No preservatives   |
| <b>Storage</b>       | Store as concentrated solution. Centrifuge briefly prior to opening vial. For short-term storage (1-2 weeks), store at 4°C. For long-term storage, aliquot and store at -20°C or below. Avoid multiple freeze-thaw cycles. |
| <b>Concentration</b> | 1 mg/ml (Please refer to the vial label for the specific concentration.)   |
| <b>Immunogen</b>     | Recombinant fragment of human beta Catenin   |
| <b>Purification</b>  | Affinity purified by Protein A.  |
| <b>Conjugation</b>   | Unconjugated   |

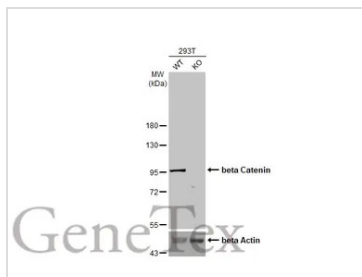
**Note**

For laboratory research use only. Not for any clinical, therapeutic, or diagnostic use in humans or animals. Not for animal or human consumption.

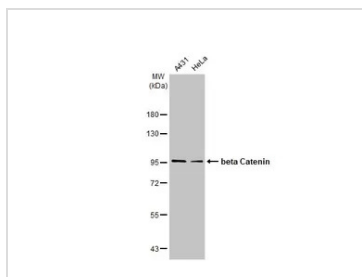
Purchasers shall not, and agree not to enable third parties to, analyze, copy, reverse engineer or otherwise attempt to determine the structure or sequence of the product.



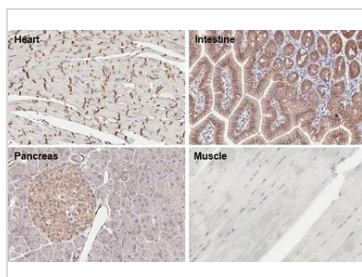
For full product information, images and publications, please visit our [website](#).

**DATA IMAGES**

**GTx637403 WB Image**

Wild-type (WT) and CTNNB1 knockout (KO) 293T cell extracts (30 µg) were separated by 7.5% SDS-PAGE, and the membrane was blotted with beta Catenin antibody [HL1753] (GTx637403) diluted at 1:1000. The HRP-conjugated anti-rabbit IgG antibody (GTx213110-01) was used to detect the primary antibody, and the signal was developed with Trident ECL plus-Enhanced.


**GTx637403 WB Image**

Various whole cell extracts (30 µg) were separated by 7.5% SDS-PAGE, and the membrane was blotted with beta Catenin antibody [HL1753] (GTx637403) diluted at 1:1000. The HRP-conjugated anti-rabbit IgG antibody (GTx213110-01) was used to detect the primary antibody.

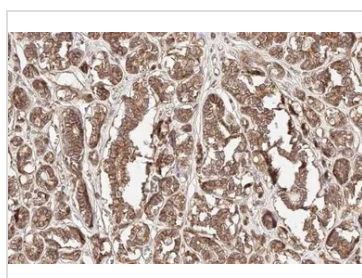

**GTx637403 IHC-P Image**

beta Catenin antibody [HL1753] detects beta Catenin protein at cell membrane by immunohistochemical analysis.

Sample: Paraffin-embedded mouse tissue.

beta Catenin stained by beta Catenin antibody [HL1753] (GTx637403) diluted at 1:100.

Antigen Retrieval: Citrate buffer, pH 6.0, 15 min

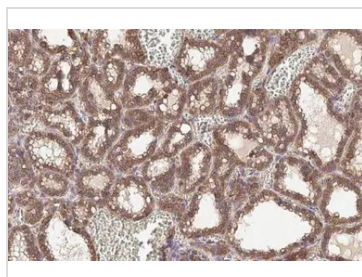

**GTx637403 IHC-P Image**

beta Catenin antibody [HL1753] detects beta Catenin protein at cell membrane by immunohistochemical analysis.

Sample: Paraffin-embedded cat mammary gland.

beta Catenin stained by beta Catenin antibody [HL1753] (GTx637403) diluted at 1:100.

Antigen Retrieval: Citrate buffer, pH 6.0, 15 min


**GTx637403 IHC-P Image**

beta Catenin antibody [HL1753] detects beta Catenin protein at cell membrane by immunohistochemical analysis.

Sample: Paraffin-embedded dog mammary gland.

beta Catenin stained by beta Catenin antibody [HL1753] (GTx637403) diluted at 1:100.

Antigen Retrieval: Citrate buffer, pH 6.0, 15 min



For full product information, images and publications, please visit our [website](https://www.genetex.com).