

Heme Oxygenase 1 antibody [HL1780]

Cat. No. GTX637432

Host	Rabbit
Clonality	Monoclonal
Isotype	IgG
Applications	WB, IHC-P
Reactivity	Human, Mouse, Rat, Cat

References (2)

Package

100 µl, 25 µl

Applications

Application Note

*Optimal dilutions/concentrations should be determined by the researcher.

Suggested dilution	Recommended dilution
WB	1:500-1:3000
IHC-P	Assay dependent

Not tested in other applications.

Observed MW (kDa) 33 kDa.**Product Note**

This antibody is specific for human Heme Oxygenase 1 protein, and it does not cross react with human Heme Oxygenase 2 protein.

Properties

Form	Liquid
Buffer	PBS
Preservative	No preservatives
Storage	Store as concentrated solution. Centrifuge briefly prior to opening vial. For short-term storage (1-2 weeks), store at 4°C. For long-term storage, aliquot and store at -20°C or below. Avoid multiple freeze-thaw cycles.
Concentration	1 mg/ml (Please refer to the vial label for the specific concentration.)
Immunogen	Recombinant fragment of human Heme Oxygenase 1
Purification	Affinity purified by Protein A.
Conjugation	Unconjugated

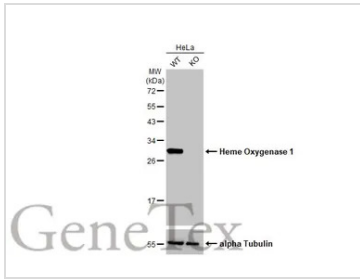
Note

For laboratory research use only. Not for any clinical, therapeutic, or diagnostic use in humans or animals. Not for animal or human consumption.

Purchasers shall not, and agree not to enable third parties to, analyze, copy, reverse engineer or otherwise attempt to determine the structure or sequence of the product.

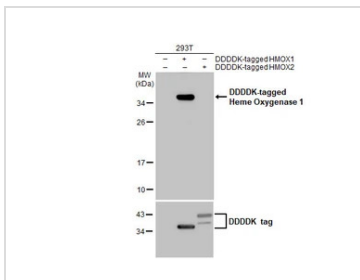
For full product information, images and publications, please visit our [website](#).

DATA IMAGES



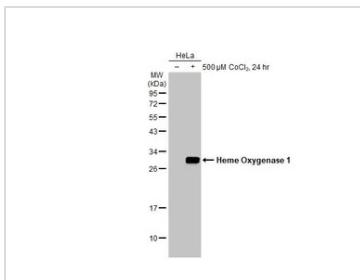
GTX637432 WB Image

Wild-type (WT) and HMOX1 knockout (KO) HeLa cell extracts (30 µg) were separated by 12% SDS-PAGE, and the membrane was blotted with Heme Oxygenase 1 antibody [HL1780] (GTX637432) diluted at 1:2000. The HRP-conjugated anti-rabbit IgG antibody (GTX213110-01) was used to detect the primary antibody, and the signal was developed with Trident ECL plus-Enhanced.



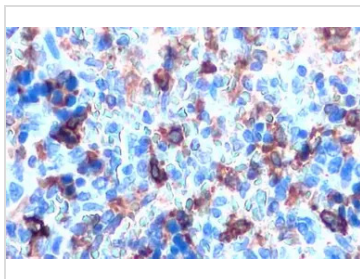
GTX637432 WB Image

Non-transfected (-) and transfected (+) 293T whole cell extracts (30 µg) were separated by 12% SDS-PAGE, and the membrane was blotted with Heme Oxygenase 1 antibody [HL1780] (GTX637432) diluted at 1:5000. The HRP-conjugated anti-rabbit IgG antibody (GTX213110-01) was used to detect the primary antibody.



GTX637432 WB Image

Untreated (-) and treated (+) HeLa whole cell extracts (30 µg) were separated by 12% SDS-PAGE, and the membrane was blotted with Heme Oxygenase 1 antibody [HL1780] (GTX637432) diluted at 1:1000. The HRP-conjugated anti-rabbit IgG antibody (GTX213110-01) was used to detect the primary antibody.



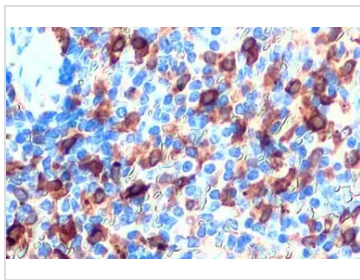
GTX637432 IHC-P Image

Heme Oxygenase 1 antibody [HL1780] detects Heme Oxygenase 1 protein at cytoplasm by immunohistochemical analysis.

Sample: Paraffin-embedded mouse spleen.

Heme Oxygenase 1 stained by Heme Oxygenase 1 antibody [HL1780] (GTX637432) diluted at 1:100.

Antigen Retrieval: Citrate buffer, pH 6.0, 15 min



GTX637432 IHC-P Image

Heme Oxygenase 1 antibody [HL1780] detects Heme Oxygenase 1 protein at cytoplasm by immunohistochemical analysis.

Sample: Paraffin-embedded rat spleen.

Heme Oxygenase 1 stained by Heme Oxygenase 1 antibody [HL1780] (GTX637432) diluted at 1:100.

Antigen Retrieval: Citrate buffer, pH 6.0, 15 min



For full product information, images and publications, please visit our [website](#).