

## HSC70 antibody [HL1788]

Cat. No. GTX637440

Host	Rabbit
Clonality	Monoclonal
Isotype	IgG
Applications	WB, IHC-P
Reactivity	Human, Mouse, Rat, Zebrafish, Japanese Medaka

## Package

100 µl, 25 µl

## Applications

## Application Note

\*Optimal dilutions/concentrations should be determined by the researcher.

Suggested dilution	Recommended dilution
WB	1:5000-1:30000
IHC-P	Assay dependent

Not tested in other applications.

**Calculated MW** 71 kDa. ( [Note](#) )

**Product Note** This antibody is specific for human HSC70 protein, and it does not cross react with human HSPA1A, HSPA1L, HSPA2, HSPA5, HSPA6, and HSPA9 protein.

## Properties

Form	Liquid
Buffer	PBS
Preservative	No preservatives
Storage	Store as concentrated solution. Centrifuge briefly prior to opening vial. For short-term storage (1-2 weeks), store at 4°C. For long-term storage, aliquot and store at -20°C or below. Avoid multiple freeze-thaw cycles.
Concentration	1 mg/ml (Please refer to the vial label for the specific concentration.)
Immunogen	Recombinant fragment of human HSC70.
Purification	Affinity purified by Protein A.
Conjugation	Unconjugated

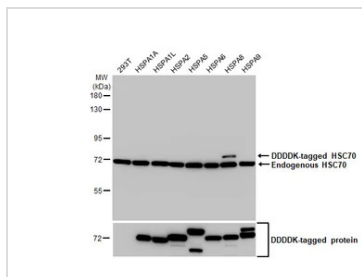
## Note

For laboratory research use only. Not for any clinical, therapeutic, or diagnostic use in humans or animals. Not for animal or human consumption.

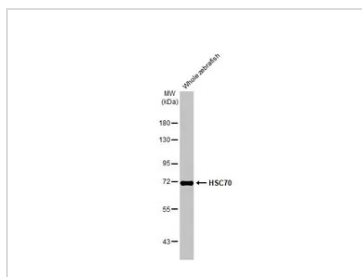
Purchasers shall not, and agree not to enable third parties to, analyze, copy, reverse engineer or otherwise attempt to determine the structure or sequence of the product.



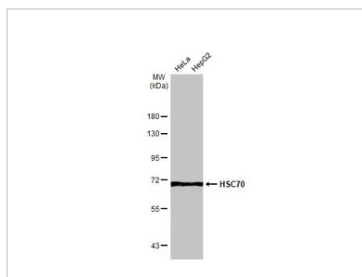
For full product information, images and publications, please visit our [website](#).

**DATA IMAGES**

**GTX637440 WB Image**

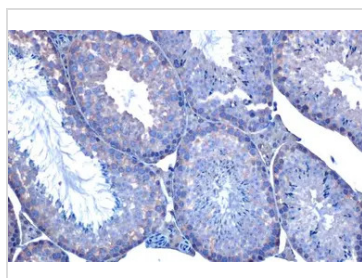
Non-transfected (–) and transfected (+) 293T whole cell extracts were separated by 7.5% SDS-PAGE, and the membrane was blotted with HSC70 antibody [HL1788] (GTX637440) diluted at 1:30000. The HRP-conjugated anti-rabbit IgG antibody (GTX213110-01) was used to detect the primary antibody.


**GTX637440 WB Image**

Whole zebrafish extract (30 µg) was separated by 7.5% SDS-PAGE, and the membrane was blotted with HSC70 antibody [HL1788] (GTX637440) diluted at 1:1000. The HRP-conjugated anti-rabbit IgG antibody (GTX213110-01) was used to detect the primary antibody.


**GTX637440 WB Image**

Various whole cell extracts (30 µg) were separated by 7.5% SDS-PAGE, and the membrane was blotted with HSC70 antibody [HL1788] (GTX637440) diluted at 1:1000. The HRP-conjugated anti-rabbit IgG antibody (GTX213110-01) was used to detect the primary antibody.

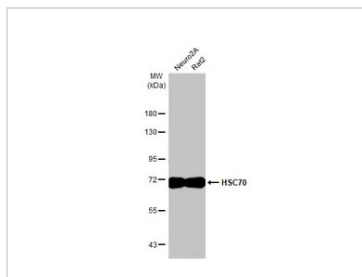

**GTX637440 IHC-P Image**

HSC70 antibody [HL1788] detects HSC70 protein at cytoplasm by immunohistochemical analysis.

Sample: Paraffin-embedded mouse testis.

HSC70 stained by HSC70 antibody [HL1788] (GTX637440) diluted at 1:100.

Antigen Retrieval: Citrate buffer, pH 6.0, 15 min


**GTX637440 WB Image**

Various whole cell extracts (30 µg) were separated by 7.5% SDS-PAGE, and the membrane was blotted with HSC70 antibody [HL1788] (GTX637440) diluted at 1:1000. The HRP-conjugated anti-rabbit IgG antibody (GTX213110-01) was used to detect the primary antibody.



For full product information, images and publications, please visit our [website](https://www.genetex.com).