

## MX1 antibody [HL1790]

Cat. No. GTX637442

Host	Rabbit
Clonality	Monoclonal
Isotype	IgG
Applications	WB, ICC/IF, IHC-P
Reactivity	Human, Cat

Package  
100 µl, 25 µl

## Applications

## Application Note

\*Optimal dilutions/concentrations should be determined by the researcher.

Suggested dilution	Recommended dilution
WB	1:500-1:10000
ICC/IF	Assay dependent
IHC-P	Assay dependent

Not tested in other applications.

Observed MW (kDa)	76 kDa.
Product Note	This antibody is specific for human MX1 protein, and it does not cross react with human MX2 protein.

## Properties

Form	Liquid
Buffer	PBS
Preservative	No preservatives
Storage	Store as concentrated solution. Centrifuge briefly prior to opening vial. For short-term storage (1-2 weeks), store at 4°C. For long-term storage, aliquot and store at -20°C or below. Avoid multiple freeze-thaw cycles.
Concentration	1 mg/ml (Please refer to the vial label for the specific concentration.)
Immunogen	Recombinant fragment of human MX1
Purification	Affinity purified by Protein A.
Conjugation	Unconjugated

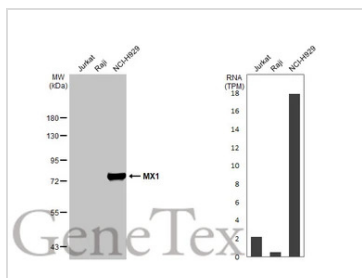


For full product information, images and publications, please visit our [website](#).

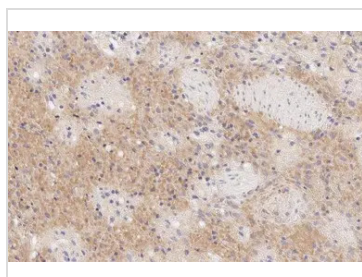
For laboratory research use only. Not for any clinical, therapeutic, or diagnostic use in humans or animals. Not for animal or human consumption.

**Note**

Purchasers shall not, and agree not to enable third parties to, analyze, copy, reverse engineer or otherwise attempt to determine the structure or sequence of the product.

**DATA IMAGES**

**GTX637442 WB Image**

Various whole cell extracts (30 µg) were separated by 7.5% SDS-PAGE, and the membrane was blotted with MX1 antibody [HL1790] (GTX637442) diluted at 1:1000. The HRP-conjugated anti-rabbit IgG antibody (GTX213110-01) was used to detect the primary antibody. Corresponding RNA expression data for the same cell lines are based on Human Protein Atlas program.

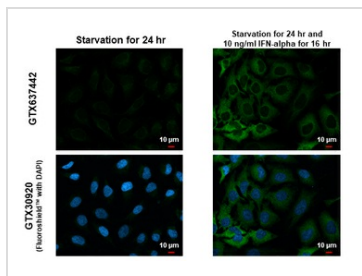

**GTX637442 IHC-P Image**

MX1 antibody [HL1790] detects MX1 protein at cytoplasm by immunohistochemical analysis.

Sample: Paraffin-embedded cat spleen.

MX1 stained by MX1 antibody [HL1790] (GTX637442) diluted at 1:100.

Antigen Retrieval: Citrate buffer, pH 6.0, 15 min

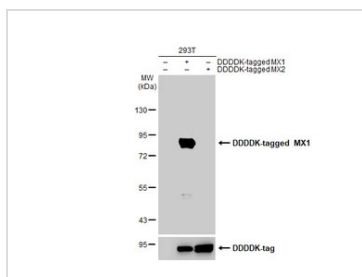

**GTX637442 ICC/IF Image**

MX1 antibody [HL1790] detects MX1 protein at cytoplasm by immunofluorescent analysis.

Sample: Mock and treated HeLa cells were fixed in 4% paraformaldehyde at RT for 15 min.

Green: MX1 stained by MX1 antibody [HL1790] (GTX637442) diluted at 1:500.

Blue: Fluoroshield with DAPI (GTX30920).


**GTX637442 WB Image**

Non-transfected (–) and transfected (+) 293T whole cell extracts (30 µg) were separated by 7.5% SDS-PAGE, and the membrane was blotted with MX1 antibody [HL1790] (GTX637442) diluted at 1:5000. The HRP-conjugated anti-rabbit IgG antibody (GTX213110-01) was used to detect the primary antibody.



For full product information, images and publications, please visit our [website](http://www.genetex.com).