

EPO antibody [HL1794]

Cat. No. GTX637446

Host	Rabbit
Clonality	Monoclonal
Isotype	IgG
Applications	WB, IHC-P, ELISA, Neutralizing/Inhibition, Sandwich ELISA
Reactivity	Human, Cat, Dog

Package
100 µl, 25 µl

Applications

Application Note

*Optimal dilutions/concentrations should be determined by the researcher.

Suggested dilution	Recommended dilution
WB	Assay dependent
IHC-P	Assay dependent
ELISA	Assay dependent
Neutralizing/Inhibition	Assay dependent
Sandwich ELISA	Assay dependent

Note : Capture : GTX637446/GTX637445, Detection : GTX637445/GTX637446 or Capture : GTX637445, Detection : GTX637446-01
Please notice that the capture antibody needs to be conjugated to HRP to function as the detection antibody when paired with the capture antibody.
Please contact us for custom HRP-conjugated antibody.

Not tested in other applications.

Calculated MW 21 kDa. ([Note](#))

Properties

Form	Liquid
Buffer	PBS
Preservative	No preservatives
Storage	Store as concentrated solution. Centrifuge briefly prior to opening vial. For short-term storage (1-2 weeks), store at 4°C. For long-term storage, aliquot and store at -20°C or below. Avoid multiple freeze-thaw cycles.
Concentration	1 mg/ml (Please refer to the vial label for the specific concentration.)
Immunogen	Recombinant fragment of human EPO
Purification	Affinity purified by Protein A.



For full product information, images and publications, please visit our [website](#).

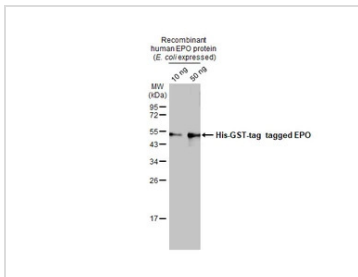
Conjugation

Unconjugated

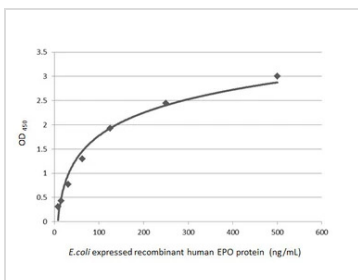
Note

For laboratory research use only. Not for any clinical, therapeutic, or diagnostic use in humans or animals. Not for animal or human consumption.

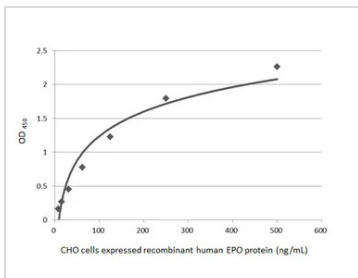
Purchasers shall not, and agree not to enable third parties to, analyze, copy, reverse engineer or otherwise attempt to determine the structure or sequence of the product.

DATA IMAGES

GTX637446 WB Image

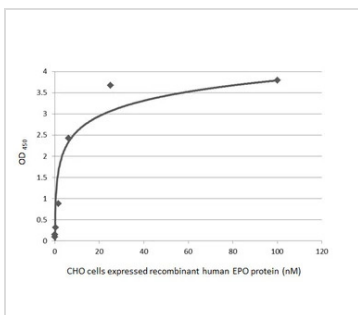
Escherichia coli expressed recombinant human EPO protein were separated by 12% SDS-PAGE, and the membrane was blotted with EPO antibody [HL1794] (GTX637446) diluted at 1:50000. The HRP-conjugated anti-rabbit IgG antibody (GTX213110-01) was used to detect the primary antibody, and the signal was developed with Trident ECL plus-Enhanced.


GTX637446 ELISA Image

Indirect ELISA analysis was performed by coating the plate with recombinant E.coli expressed, full-length human EPO protein, His and GST tag (active) (GTX00422-pro) (500-7.81 ng/mL). Coated protein was probed with EPO antibody [HL1794] (GTX637446) (1 µg/mL). Goat anti-rabbit IgG antibody (HRP) (GTX213110-01) (1:10000) was used to detect the bound primary antibody.


GTX637446 ELISA Image

Indirect ELISA analysis was performed by coating the plate with recombinant CHO cells expressed, full-length human EPO protein (500-7.81 ng/mL). Coated protein was probed with EPO antibody [HL1794] (GTX637446) (1 µg/mL). Goat anti-rabbit IgG antibody (HRP) (GTX213110-01) (1:10000) was used to detect the bound primary antibody.


GTX637446 ELISA Image

Sandwich ELISA detection of recombinant CHO cells expressed, full-length human EPO protein using antibodies as below.

Capture: EPO antibody [HL1794] (GTX637446) (5 µg/mL)

Detection: HRP-conjugated EPO antibody [HL1793] (GTX637445) (1 µg/mL)

Please notice that GTX637445 needs to be conjugated to HRP to function as the detection antibody when paired with GTX637446. Please contact us for custom HRP-conjugated antibody.



For full product information, images and publications, please visit our [website](https://www.genetex.com).