

## Grp78 antibody [HL1815]

Cat. No. GTX637540

Host	Rabbit
Clonality	Monoclonal
Isotype	IgG
Applications	WB, ICC/IF, IHC-P
Reactivity	Human, Mouse, Rat

Package  
100 µl, 25 µl

## Applications

## Application Note

\*Optimal dilutions/concentrations should be determined by the researcher.

Suggested dilution	Recommended dilution
WB	Assay dependent
ICC/IF	Assay dependent
IHC-P	1:100-1:1000

Not tested in other applications.

Calculated MW 72 kDa. ( [Note](#) )

**Product Note** This antibody is specific for human HSPA5 protein, and it does not cross react with human HSPA1A, HSPA1L, HSPA2, HSPA6, HSPA8, and HSPA9 protein.

## Properties

Form	Liquid
Buffer	PBS
Preservative	No preservatives
Storage	Store as concentrated solution. Centrifuge briefly prior to opening vial. For short-term storage (1-2 weeks), store at 4°C. For long-term storage, aliquot and store at -20°C or below. Avoid multiple freeze-thaw cycles.
Concentration	1 mg/ml (Please refer to the vial label for the specific concentration.)
Immunogen	Recombinant fragment of human Grp78
Purification	Affinity purified by Protein A.
Conjugation	Unconjugated



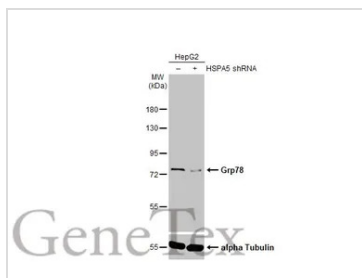
For full product information, images and publications, please visit our [website](#).

For laboratory research use only. Not for any clinical, therapeutic, or diagnostic use in humans or animals. Not for animal or human consumption.

## Note

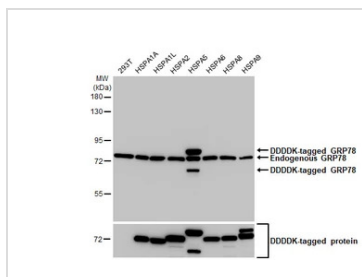
Purchasers shall not, and agree not to enable third parties to, analyze, copy, reverse engineer or otherwise attempt to determine the structure or sequence of the product.

## DATA IMAGES



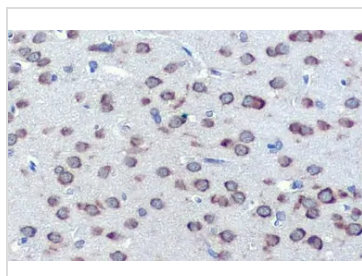
### GTX637540 WB Image

Non-transfected (–) and transfected (+) HepG2 whole cell extracts (5 µg) were separated by 7.5% SDS-PAGE, and the membrane was blotted with Grp78 antibody [HL1815] (GTX637540) diluted at 1:100000. The HRP-conjugated anti-rabbit IgG antibody (GTX213110-01) was used to detect the primary antibody.



### GTX637540 WB Image

Non-transfected (–) and transfected (+) 293T whole cell extracts were separated by 7.5% SDS-PAGE, and the membrane was blotted with Grp78 antibody [HL1815] (GTX637540) diluted at 1:30000. The HRP-conjugated anti-rabbit IgG antibody (GTX213110-01) was used to detect the primary antibody.



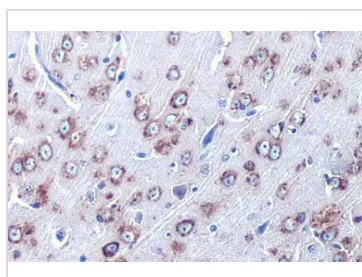
### GTX637540 IHC-P Image

Grp78 antibody [HL1815] detects Grp78 protein at cytoplasm by immunohistochemical analysis.

Sample: Paraffin-embedded rat brain.

Grp78 stained by Grp78 antibody [HL1815] (GTX637540) diluted at 1:100.

Antigen Retrieval: Citrate buffer, pH 6.0, 15 min



### GTX637540 IHC-P Image

Grp78 antibody [HL1815] detects Grp78 protein at cytoplasm by immunohistochemical analysis.

Sample: Paraffin-embedded mouse brain.

Grp78 stained by Grp78 antibody [HL1815] (GTX637540) diluted at 1:100.

Antigen Retrieval: Citrate buffer, pH 6.0, 15 min



For full product information, images and publications, please visit our [website](https://www.genetex.com).