

## Human Papillomavirus type 16 E7 antibody [HL1821]

Cat. No. GTX637546

|                     |                                         |
|---------------------|-----------------------------------------|
| <b>Host</b>         | Rabbit                                  |
| <b>Clonality</b>    | Monoclonal                              |
| <b>Isotype</b>      | IgG                                     |
| <b>Applications</b> | WB, ELISA, Lateral Flow, Sandwich ELISA |
| <b>Reactivity</b>   | Human papillomavirus type 16            |

References ( 1 )

Package

100 µl, 25 µl

## Applications

## Application Note

\*Optimal dilutions/concentrations should be determined by the researcher.

| Suggested dilution | Recommended dilution |
|--------------------|----------------------|
| WB                 | Assay dependent      |
| ELISA              | Assay dependent      |
| Lateral Flow       | Assay dependent      |
| Sandwich ELISA     | Assay dependent      |

**Note : Capture: GTX637228, Detection: GTX637546**

**Capture : GTX637546 / GTX637228, Detection : GTX637228 / GTX637546. Please notice that GTX637228 / GTX637546 needs to be conjugated to HRP to function as the detection antibody when paired with GTX637546 / GTX637228. Please contact us for custom HRP-conjugated antibody.**

Not tested in other applications.

## Product Note

This antibody was raised against Human Papillomavirus type 16 E7, and it does not cross-react with Human Papillomavirus type 18 E7.

## Properties

|                      |                                                                                                                                                                                                                            |
|----------------------|----------------------------------------------------------------------------------------------------------------------------------------------------------------------------------------------------------------------------|
| <b>Form</b>          | Liquid                                                                                                                                                                                                                     |
| <b>Buffer</b>        | PBS                                                                                                                                                                                                                        |
| <b>Preservative</b>  | No preservatives                                                                                                                                                                                                           |
| <b>Storage</b>       | Store as concentrated solution. Centrifuge briefly prior to opening vial. For short-term storage (1-2 weeks), store at 4°C. For long-term storage, aliquot and store at -20°C or below. Avoid multiple freeze-thaw cycles. |
| <b>Concentration</b> | 2 mg/ml (Please refer to the vial label for the specific concentration.)                                                                                                                                                   |
| <b>Immunogen</b>     | Full length Human Papillomavirus type 16 E7 recombinant protein (#Isolate African 1 / Isolate European German 131)                                                                                                         |
| <b>Purification</b>  | Affinity purified by Protein A.                                                                                                                                                                                            |
| <b>Conjugation</b>   | Unconjugated                                                                                                                                                                                                               |



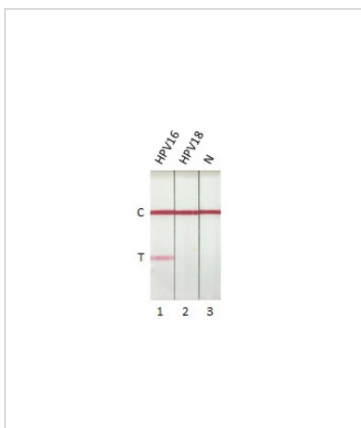
For full product information, images and publications, please visit our [website](#).

For laboratory research use only. Not for any clinical, therapeutic, or diagnostic use in humans or animals. Not for animal or human consumption.

## Note

Purchasers shall not, and agree not to enable third parties to, analyze, copy, reverse engineer or otherwise attempt to determine the structure or sequence of the product.

## DATA IMAGES



### GTX637546 Lateral Flow Image

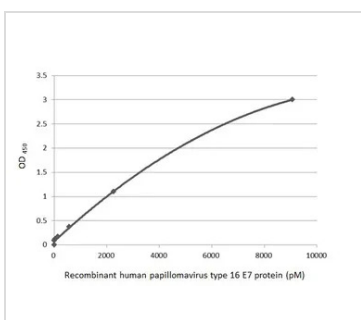
Detection of Human Papillomavirus type 16 E7 protein by lateral flow assay using the monoclonal antibody pair.

**Capture:** Human Papillomavirus type 16 E7 antibody (GTX637228 [HL1647])

**Detection:** Human Papillomavirus type 16 E7 antibody (GTX637546 [HL1821])

#### Samples (10 ng) :

1. HPV16 E7 protein (GTX133411-pro)
2. HPV18 E7 protein (GTX133412-pro)
3. Lysis buffer



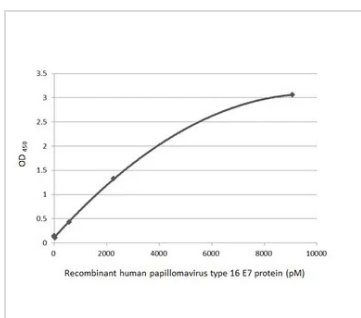
### GTX637546 ELISA Image

Sandwich ELISA detection of recombinant Human Papillomavirus type 16 E7 protein, His tag (GTX133411-pro) using antibodies as below.

**Capture:** Human Papillomavirus type 16 E7 antibody [HL1647] (GTX637228) (5 µg/mL)

**Detection:** HRP-conjugated Human Papillomavirus type 16 E7 antibody [HL1821] (GTX637546) (1 µg/mL)

Please notice that GTX637546 needs to be conjugated to HRP to function as the detection antibody when paired with GTX637228. Please contact us for custom HRP-conjugated antibody.



### GTX637546 ELISA Image

Sandwich ELISA detection of recombinant Human Papillomavirus type 16 E7 protein, His tag (GTX133411-pro) using antibodies as below.

**Capture:** Human Papillomavirus type 16 E7 antibody [HL1821] (GTX637546) (5 µg/mL)

**Detection:** HRP-conjugated Human Papillomavirus type 16 E7 antibody [HL1647] (GTX637228) (1 µg/mL)

Please notice that GTX637228 needs to be conjugated to HRP to function as the detection antibody when paired with GTX637546. Please contact us for custom HRP-conjugated antibody.



For full product information, images and publications, please visit our [website](#).