

## Prealbumin antibody [HL1823]

Cat. No. GTX637548

Host	Rabbit
Clonality	Monoclonal
Isotype	IgG
Applications	WB, ICC/IF, IHC-P
Reactivity	Human, Mouse, Rat

Package  
100 µl, 25 µl

## Applications

## Application Note

\*Optimal dilutions/concentrations should be determined by the researcher.

Suggested dilution	Recommended dilution
WB	1:1000-1:10000
ICC/IF	Assay dependent
IHC-P	Assay dependent

Not tested in other applications.

**Observed MW (kDa)** 16 (monomer), 32 (dimer) kDa.

## Properties

Form	Liquid
Buffer	PBS
Preservative	No preservatives
Storage	Store as concentrated solution. Centrifuge briefly prior to opening vial. For short-term storage (1-2 weeks), store at 4°C. For long-term storage, aliquot and store at -20°C or below. Avoid multiple freeze-thaw cycles.
Concentration	1 mg/ml (Please refer to the vial label for the specific concentration.)
Immunogen	Full length human Prealbumin
Purification	Affinity purified by Protein A.
Conjugation	Unconjugated

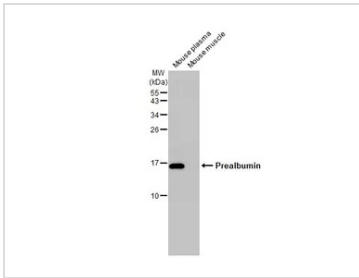
## Note

For laboratory research use only. Not for any clinical, therapeutic, or diagnostic use in humans or animals. Not for animal or human consumption.

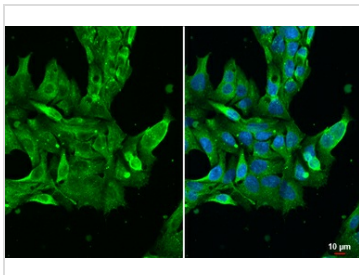
Purchasers shall not, and agree not to enable third parties to, analyze, copy, reverse engineer or otherwise attempt to determine the structure or sequence of the product.



For full product information, images and publications, please visit our [website](#).

**DATA IMAGES**

**GTX637548 WB Image**

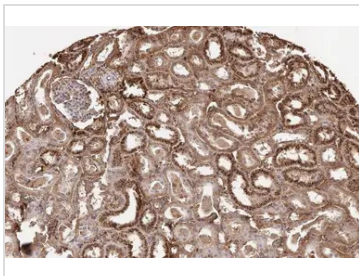
Various tissue extracts (50 µg) were separated by 15% SDS-PAGE, and the membrane was blotted with Prealbumin antibody [HL1823] (GTX637548) diluted at 1:5000. The HRP-conjugated anti-rabbit IgG antibody (GTX213110-01) was used to detect the primary antibody.


**GTX637548 ICC/IF Image**

Prealbumin antibody [HL1823] detects Prealbumin protein at cytoplasm by immunofluorescent analysis. Sample: HepG2 cells were fixed in 4% paraformaldehyde at RT for 15 min.

Green: Prealbumin stained by Prealbumin antibody [HL1823] (GTX637548) diluted at 1:500.

Blue: Fluoroshield with DAPI (GTX30920).

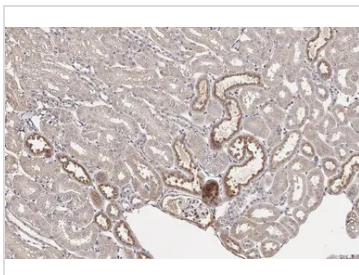

**GTX637548 IHC-P Image**

Prealbumin antibody [HL1823] detects secreted Prealbumin protein by immunohistochemical analysis.

Sample: Paraffin-embedded rat kidney.

Prealbumin stained by Prealbumin antibody [HL1823] (GTX637548) diluted at 1:100.

Antigen Retrieval: Citrate buffer, pH 6.0, 15 min

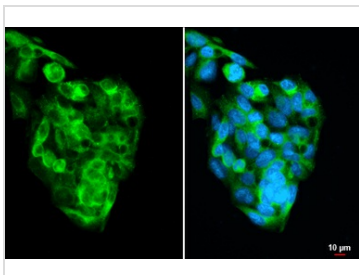

**GTX637548 IHC-P Image**

Prealbumin antibody [HL1823] detects secreted Prealbumin protein by immunohistochemical analysis.

Sample: Paraffin-embedded mouse kidney.

Prealbumin stained by Prealbumin antibody [HL1823] (GTX637548) diluted at 1:100.

Antigen Retrieval: Citrate buffer, pH 6.0, 15 min


**GTX637548 ICC/IF Image**

Prealbumin antibody [HL1823] detects Prealbumin protein by immunofluorescent analysis.

Sample: HepG2 cells were fixed in 4% paraformaldehyde at RT for 15 min.

Green: Prealbumin stained by Prealbumin antibody [HL1823] (GTX637548) diluted at 1:500.

Blue: Fluoroshield with DAPI (GTX30920).

Scale bar= 10µm.



For full product information, images and publications, please visit our [website](https://www.genetex.com).