

Influenza A virus M2 (matrix protein) antibody [HL1856]

Cat. No. GTX637581

| | |
|---------------------|-------------------|
| Host | Rabbit |
| Clonality | Monoclonal |
| Isotype | IgG |
| Applications | WB, ICC/IF |
| Reactivity | Influenza A virus |

Package
100 µl, 25 µl

Applications

Application Note

*Optimal dilutions/concentrations should be determined by the researcher.

| Suggested dilution | Recommended dilution |
|--------------------|----------------------|
| WB | 1:1000-1:10000 |
| ICC/IF | Assay dependent |

Not tested in other applications.

Properties

| | |
|----------------------|--|
| Form | Liquid |
| Buffer | PBS |
| Preservative | No preservatives |
| Storage | Store as concentrated solution. Centrifuge briefly prior to opening vial. For short-term storage (1-2 weeks), store at 4°C. For long-term storage, aliquot and store at -20°C or below. Avoid multiple freeze-thaw cycles. |
| Concentration | 1 mg/ml (Please refer to the vial label for the specific concentration.) |
| Immunogen | Recombinant fragment of Influenza A virus M2 (matrix protein) (Influenza A virus (A/Puerto Rico/8/1934(H1N1)) |
| Purification | Affinity purified by Protein A. |
| Conjugation | Unconjugated |

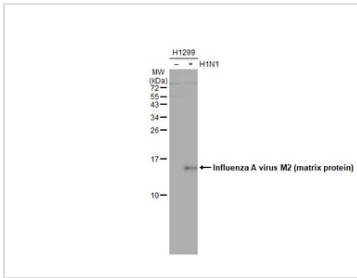
Note

For laboratory research use only. Not for any clinical, therapeutic, or diagnostic use in humans or animals. Not for animal or human consumption.

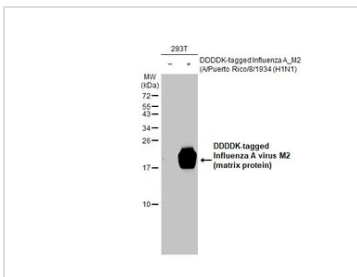
Purchasers shall not, and agree not to enable third parties to, analyze, copy, reverse engineer or otherwise attempt to determine the structure or sequence of the product.



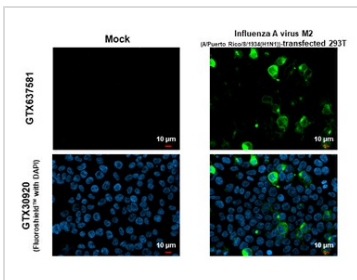
For full product information, images and publications, please visit our [website](#).

DATA IMAGES

GTX637581 WB Image

Non-infected (–) and infected (+) H1299 whole cell extract (15 µg) were separated by 15% SDS-PAGE, and the membrane was blotted with Influenza A virus M2 (matrix protein) antibody [HL1856] (GTX637581) diluted at 1:5000. The HRP-conjugated anti-rabbit IgG antibody (GTX213110-01) was used to detect the primary antibody, and the signal was developed with Trident femto Western HRP Substrate.


GTX637581 WB Image

Non-transfected (–) and transfected (+) 293T whole cell extracts (30 µg) were separated by 15% SDS-PAGE, and the membrane was blotted with Influenza A virus M2 (matrix protein) antibody [HL1856] (GTX637581) diluted at 1:5000. The HRP-conjugated anti-rabbit IgG antibody (GTX213110-01) was used to detect the primary antibody.


GTX637581 ICC/IF Image

Influenza A virus M2 (matrix protein) antibody [HL1856] detects Influenza A virus M2 (matrix protein) protein by immunofluorescent analysis.

Sample: Mock and transfected 293T cells were fixed in 4% paraformaldehyde at RT for 15 min.

Green: Influenza A virus M2 (matrix protein) stained by Influenza A virus M2 (matrix protein) antibody [HL1856] (GTX637581) diluted at 1:500.

Blue: Fluoroshield with DAPI (GTX30920).



For full product information, images and publications, please visit our [website](https://www.genetex.com).