

IL18 antibody [HL1859]

Cat. No. GTX637584

Host	Rabbit
Clonality	Monoclonal
Isotype	IgG
Applications	WB, ICC/IF, IHC-P, ELISA, Sandwich ELISA
Reactivity	Human, Mouse

References (1)

★★★★☆ Review (1)

Package

100 µl, 25 µl

Applications

Application Note

*Optimal dilutions/concentrations should be determined by the researcher.

Suggested dilution	Recommended dilution
WB	1:500-1:3000
ICC/IF	Assay dependent
IHC-P	1:100-1:1000
ELISA	Assay dependent
Sandwich ELISA	Assay dependent

Note : Capture : GTX637584 / GTX637411, Detection : GTX637411 / GTX637584 or Capture : GTX640322, Detection : GTX637584. Please notice that the detection antibody requires HRP to function as the detection antibody when paired with capture antibody. Please contact us for the conjugation service.

Not tested in other applications.

Observed MW (kDa) 17, 22 kDa.

Properties

Form	Liquid
Buffer	PBS
Preservative	No preservatives
Storage	Store as concentrated solution. Centrifuge briefly prior to opening vial. For short-term storage (1-2 weeks), store at 4°C. For long-term storage, aliquot and store at -20°C or below. Avoid multiple freeze-thaw cycles.
Concentration	1 mg/ml (Please refer to the vial label for the specific concentration.)
Immunogen	Recombinant fragment of mouse IL18
Purification	Affinity purified by Protein A.
Conjugation	Unconjugated

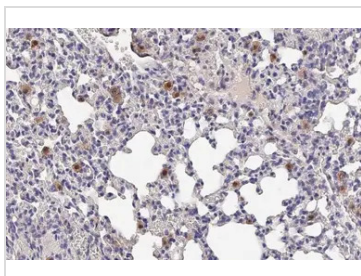


For full product information, images and publications, please visit our [website](#).

For laboratory research use only. Not for any clinical, therapeutic, or diagnostic use in humans or animals. Not for animal or human consumption.

Note

Purchasers shall not, and agree not to enable third parties to, analyze, copy, reverse engineer or otherwise attempt to determine the structure or sequence of the product.

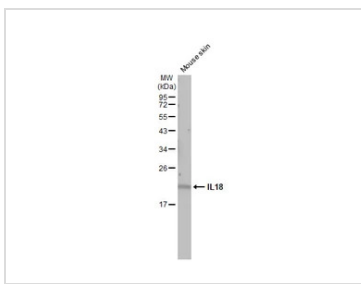
DATA IMAGES

GTX637584 IHC-P Image

IL18 antibody [HL1859] detects secreted IL18 protein by immunohistochemical analysis.

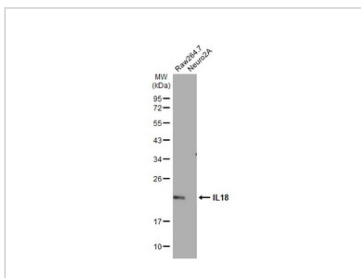
Sample: Paraffin-embedded mouse lung.

IL18 stained by IL18 antibody [HL1859] (GTX637584) diluted at 1:100.

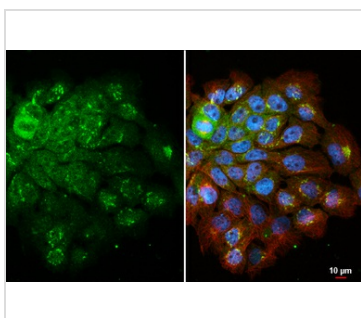
Antigen Retrieval: Citrate buffer, pH 6.0, 15 min


GTX637584 WB Image

Mouse tissue extract (50 µg) was separated by 12% SDS-PAGE, and the membrane was blotted with IL18 antibody [HL1859] (GTX637584) diluted at 1:1000. The HRP-conjugated anti-rabbit IgG antibody (GTX213110-01) was used to detect the primary antibody, and the signal was developed with Trident ECL plus-Enhanced.


GTX637584 WB Image

Various whole cell extracts (30 µg) were separated by 12% SDS-PAGE, and the membrane was blotted with IL18 antibody [HL1859] (GTX637584) diluted at 1:1000. The HRP-conjugated anti-rabbit IgG antibody (GTX213110-01) was used to detect the primary antibody.


GTX637584 ICC/IF Image

IL18 antibody [HL1859] detects IL18 protein at Golgi apparatus and cytoplasm by immunofluorescent analysis.

Sample: A431 cells were fixed in 4% paraformaldehyde at RT for 15 min.

Green: IL18 stained by IL18 antibody [HL1859] (GTX637584) diluted at 1:500.

Red: alpha Tubulin, a cytoskeleton marker, stained by alpha Tubulin antibody [GT114] (GTX628802) diluted at 1:1000.

Blue: Fluoroshield with DAPI (GTX30920).



For full product information, images and publications, please visit our [website](https://www.genetex.com).