

GPRC5A antibody [HL1864]

Cat. No. GTX637589

Host	Rabbit
Clonality	Monoclonal
Isotype	IgG
Applications	WB, ICC/IF, IHC-P
Reactivity	Human

Package
100 µl, 25 µl

Applications

Application Note

*Optimal dilutions/concentrations should be determined by the researcher.

Suggested dilution	Recommended dilution
WB	1:500-1:3000
ICC/IF	Assay dependent
IHC-P	Assay dependent

Not tested in other applications.

Observed MW (kDa) 34-60 kDa.

Product Note Highly recommended for IHC-P in human tissues.
This antibody was raised against human RAI3 Intracellular domain.

Properties

Form	Liquid
Buffer	PBS
Preservative	No preservatives
Storage	Store as concentrated solution. Centrifuge briefly prior to opening vial. For short-term storage (1-2 weeks), store at 4°C. For long-term storage, aliquot and store at -20°C or below. Avoid multiple freeze-thaw cycles.
Concentration	1 mg/ml (Please refer to the vial label for the specific concentration.)
Immunogen	Recombinant protein encompassing a sequence within the Intracellular domain of human RAI3. The exact sequence is proprietary.
Purification	Affinity purified by Protein A.
Conjugation	Unconjugated

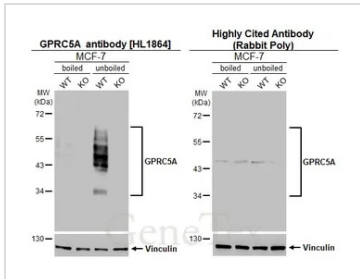


For full product information, images and publications, please visit our [website](#).

For laboratory research use only. Not for any clinical, therapeutic, or diagnostic use in humans or animals. Not for animal or human consumption.

Note
 Purchasers shall not, and agree not to enable third parties to, analyze, copy, reverse engineer or otherwise attempt to determine the structure or sequence of the product.

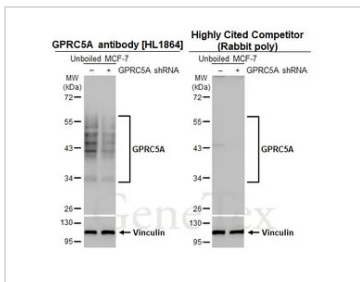
DATA IMAGES



GTX637589 WB Image

Boiled and unboiled wild-type (WT) and GPRC5A knockout (KO) MCF-7 cell extracts (30 µg) were separated by 10% SDS-PAGE, and the membranes were blotted with GPRC5A antibody [HL1864] (GTX637589) diluted at 1:5000 and competitor's antibody (Competitor) diluted at 1:5000. The HRP-conjugated anti-rabbit IgG antibody (GTX213110-01) was used to detect the primary antibody.

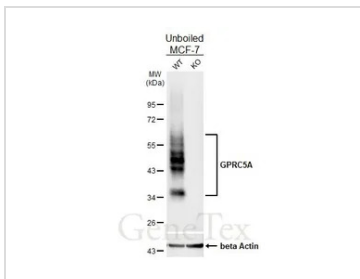
*The competitor is not affiliated with GeneTex and does not endorse this product.



GTX637589 WB Image

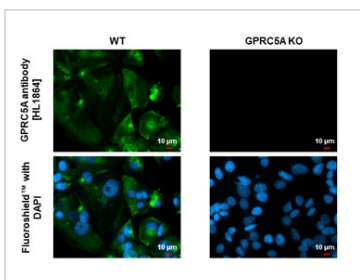
Non-transfected (-) and transfected (+) unboiled MCF-7 whole cell extracts (30 µg) were separated by 10% SDS-PAGE, and the membranes were blotted with GPRC5A antibody [HL1864] (GTX637589) diluted at 1:5000 and competitor's antibody (Competitor) diluted at 1:1000. The HRP-conjugated anti-rabbit IgG antibody (GTX213110-01) was used to detect the primary antibody.

*The competitor is not affiliated with GeneTex and does not endorse this product.



GTX637589 WB Image

Unboiled wild-type (WT) and GPRC5A knockout (KO) MCF-7 cell extracts (30 µg) were separated by 10% SDS-PAGE, and the membrane was blotted with GPRC5A antibody [HL1864] (GTX637589) diluted at 1:1000. The HRP-conjugated anti-rabbit IgG antibody (GTX213110-01) was used to detect the primary antibody.



GTX637589 ICC/IF Image

GPRC5A antibody [HL1864] detects GPRC5A protein by immunofluorescent analysis.
 Sample: Wild-type (WT) and GPRC5A knockout (KO) MCF-7 cells were fixed in ice-cold MeOH for 5 min.
 Green: GPRC5A stained by GPRC5A antibody [HL1864] (GTX637589) diluted at 1:500.
 Blue: Fluoroshield with DAPI (GTX30920)



For full product information, images and publications, please visit our [website](#).