

Equine Encephalitis Virus nsP2 antibody [HL1920]

Cat. No. GTX637669

| | |
|---------------------|--|
| Host | Rabbit |
| Clonality | Monoclonal |
| Isotype | IgG |
| Applications | WB, ICC/IF, IHC-P (cell pellet) |
| Reactivity | Venezuelan equine encephalitis virus, Eastern equine encephalitis virus, Western equine encephalitis virus |

Package
100 µl, 25 µl

Applications

Application Note

*Optimal dilutions/concentrations should be determined by the researcher.

| Suggested dilution | Recommended dilution |
|---------------------|----------------------|
| WB | 1:1000-1:10000 |
| ICC/IF | 1:100-1:1000 |
| IHC-P (cell pellet) | Assay dependent |

Not tested in other applications.

Product Note This antibody detects nsP2 protein of VEEV, EEEV, and WEEV.

Properties

| | |
|----------------------|--|
| Form | Liquid |
| Buffer | PBS |
| Preservative | No preservatives |
| Storage | Store as concentrated solution. Centrifuge briefly prior to opening vial. For short-term storage (1-2 weeks), store at 4°C. For long-term storage, aliquot and store at -20°C or below. Avoid multiple freeze-thaw cycles. |
| Concentration | 1 mg/ml (Please refer to the vial label for the specific concentration.) |
| Immunogen | Recombinant fragment of Venezuelan Equine Encephalitis Virus nsP2. (Strain P676) |
| Purification | Affinity purified by Protein A. |
| Conjugation | Unconjugated |

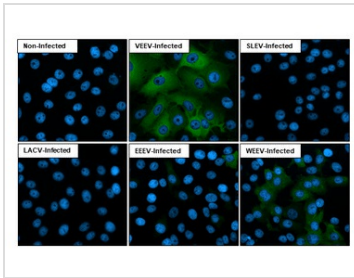
Note

For laboratory research use only. Not for any clinical, therapeutic, or diagnostic use in humans or animals. Not for animal or human consumption.

Purchasers shall not, and agree not to enable third parties to, analyze, copy, reverse engineer or otherwise attempt to determine the structure or sequence of the product.

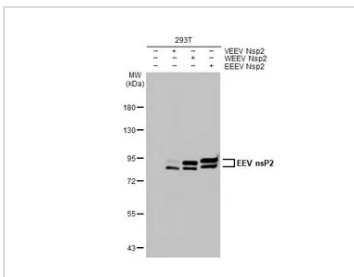


For full product information, images and publications, please visit our [website](#).

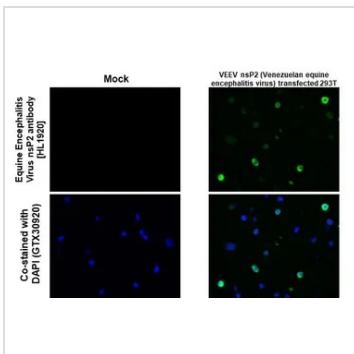
DATA IMAGES

GTx637669 ICC/IF Image

Immunofluorescent analysis of various equine encephalitis virus infected cells using Equine Encephalitis Virus nsP2 antibody [HL1920] antibody (GTx637669). Sample: Multiple virus infected cells slide.

Green: Equine Encephalitis Virus nsP2 antibody [HL1920] antibody (GTx637669) diluted at 1:100.
Blue: Fluoroshield with DAPI (GTx30920).


GTx637669 WB Image

Non-transfected (–) and transfected (+) 293T whole cell extracts (30 µg) were separated by 7.5% SDS-PAGE, and the membrane was blotted with Equine Encephalitis Virus nsP2 antibody [HL1920] (GTx637669) diluted at 1:5000. The HRP-conjugated anti-rabbit IgG antibody (GTx213110-01) was used to detect the primary antibody, and the signal was developed with Trident ECL plus-Enhanced.


GTx637669 IHC-P (cell pellet) Image

Equine Encephalitis Virus nsP2 antibody [HL1920] detects Equine Encephalitis Virus nsP2 protein by immunohistochemical analysis.

Sample: Paraffin-embedded mock and VEEV nsP2 (Venezuelan equine encephalitis virus) - transfected 293T cell pellet.

Green: Equine Encephalitis Virus nsP2 stained by Equine Encephalitis Virus nsP2 antibody [HL1920] (GTx637669) diluted at 1:5000.

Blue: Fluoroshield with DAPI (GTx30920).

Antigen Retrieval: Citrate buffer, pH 6.0, 15 min



For full product information, images and publications, please visit our [website](https://www.genetex.com).