

# Enterovirus 71 VP1 antibody [HL1929]

**Cat. No. GTX637688**

<b>Host</b>	Rabbit
<b>Clonality</b>	Monoclonal
<b>Isotype</b>	IgG
<b>Applications</b>	WB, ICC/IF, ELISA, Sandwich ELISA
<b>Reactivity</b>	Enterovirus 71

**Package**  
100 µl, 25 µl

## Applications

### Application Note

\*Optimal dilutions/concentrations should be determined by the researcher.

Suggested dilution	Recommended dilution
WB	Assay dependent
ICC/IF	Assay dependent
ELISA	Assay dependent
Sandwich ELISA	Assay dependent

**Note : Capture : GTX637688, Detection : GTX637687)**

**Please notice that GTX637687 needs to be conjugated to HRP to function as the detection antibody when paired with GTX637688. Please contact us for custom HRP-conjugated antibody.**

Not tested in other applications.

### Product Note

This antibody was raised against Enterovirus 71 VP1, and it does not cross-react with Enterovirus D68 VP1 or Coxsackievirus A6.

## Properties

<b>Form</b>	Liquid
<b>Buffer</b>	PBS
<b>Preservative</b>	No preservatives
<b>Storage</b>	Store as concentrated solution. Centrifuge briefly prior to opening vial. For short-term storage (1-2 weeks), store at 4°C. For long-term storage, aliquot and store at -20°C or below. Avoid multiple freeze-thaw cycles.
<b>Concentration</b>	1 mg/ml (Please refer to the vial label for the specific concentration.)
<b>Immunogen</b>	Synthetic peptide of Enterovirus 71 VP1. (strain USA/BrCr/1970)
<b>Purification</b>	Affinity purified by Protein A.
<b>Conjugation</b>	Unconjugated



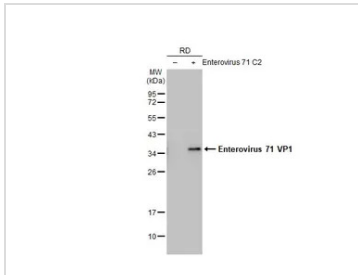
For full product information, images and publications, please visit our [website](#).

For laboratory research use only. Not for any clinical, therapeutic, or diagnostic use in humans or animals. Not for animal or human consumption.

#### Note

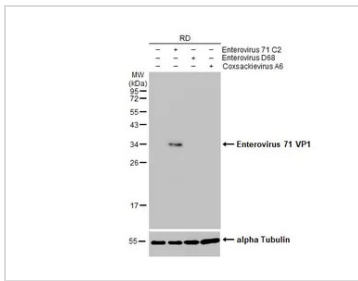
Purchasers shall not, and agree not to enable third parties to, analyze, copy, reverse engineer or otherwise attempt to determine the structure or sequence of the product.

#### DATA IMAGES



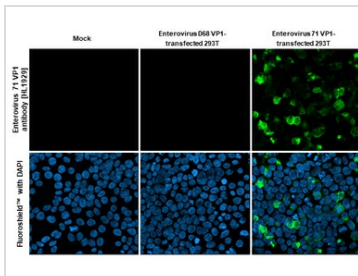
#### GTX637688 WB Image

Non-infected (-) and infected (+) RD whole cell extracts (5 µg) were separated by 12% SDS-PAGE, and the membrane was blotted with Enterovirus 71 VP1 antibody [HL1929] (GTX637688) diluted at 1:1000. The HRP-conjugated anti-rabbit IgG antibody (GTX213110-01) was used to detect the primary antibody.



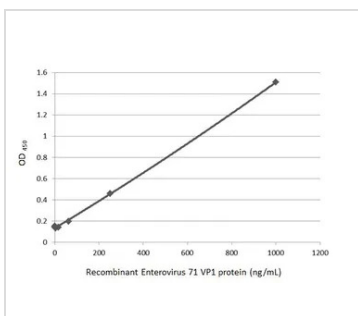
#### GTX637688 WB Image

Non-infected (-) and infected (+) RD whole cell extracts (20 µg) were separated by 12% SDS-PAGE, and the membrane was blotted with Enterovirus 71 VP1 antibody [HL1929] (GTX637688) diluted at 1:20000. The HRP-conjugated anti-rabbit IgG antibody (GTX213110-01) was used to detect the primary antibody.



#### GTX637688 ICC/IF Image

Enterovirus 71 VP1 antibody [HL1929] detects Enterovirus 71 VP1 protein by immunofluorescent analysis. Sample: Mock and transfected 293T cells were fixed in 4% paraformaldehyde at RT for 15 min. Green: Enterovirus 71 VP1 stained by Enterovirus 71 VP1 antibody [HL1929] (GTX637688) diluted at 1:500. Blue: Fluoroshield with DAPI (GTX30920).



#### GTX637688 ELISA Image

Sandwich ELISA detection of recombinant Enterovirus 71 VP1 protein, His tag (GTX138560-pro) using antibodies as below.

**Capture:** Enterovirus 71 VP1 antibody [HL1929] (GTX637688) (5 µg/mL)

**Detection:** HRP-conjugated Enterovirus 71 VP1 antibody [HL1928] (GTX637687) (1 µg/mL)

Please notice that GTX637687 needs to be conjugated to HRP to function as the detection antibody when paired with GTX637688. Please contact us for custom HRP-conjugated antibody.



For full product information, images and publications, please visit our [website](https://www.genetex.com).