

SUN1 antibody [HL1947]

Cat. No. GTX637784

Host	Rabbit
Clonality	Monoclonal
Isotype	IgG
Applications	WB, ICC/IF, IHC-P
Reactivity	Human, Mouse

Package
100 µl, 25 µl

Applications

Application Note

*Optimal dilutions/concentrations should be determined by the researcher.

Suggested dilution	Recommended dilution
WB	1:500-1:3000
ICC/IF	Assay dependent
IHC-P	Assay dependent

Not tested in other applications.

Observed MW (kDa) 90-115 kDa.

Properties

Form	Liquid
Buffer	PBS
Preservative	No preservatives
Storage	Store as concentrated solution. Centrifuge briefly prior to opening vial. For short-term storage (1-2 weeks), store at 4°C. For long-term storage, aliquot and store at -20°C or below. Avoid multiple freeze-thaw cycles.
Concentration	1 mg/ml (Please refer to the vial label for the specific concentration.)
Immunogen	Recombinant fragment of human SUN1
Purification	Affinity purified by Protein A.
Conjugation	Unconjugated

Note

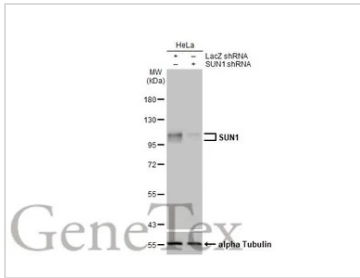
For laboratory research use only. Not for any clinical, therapeutic, or diagnostic use in humans or animals. Not for animal or human consumption.

Purchasers shall not, and agree not to enable third parties to, analyze, copy, reverse engineer or otherwise attempt to determine the structure or sequence of the product.



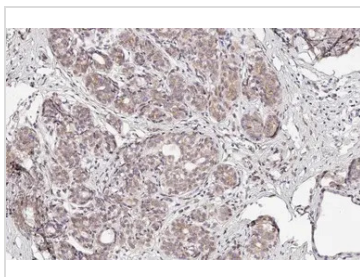
For full product information, images and publications, please visit our [website](#).

DATA IMAGES



GTX637784 WB Image

Non-transfected (–) and transfected (+) HeLa whole cell extracts (30 µg) were separated by 7.5% SDS-PAGE, and the membrane was blotted with SUN1 antibody [HL1947] (GTX637784) diluted at 1:1000. The HRP-conjugated anti-rabbit IgG antibody (GTX213110-01) was used to detect the primary antibody, and the signal was developed with Trident ECL plus-Enhanced.



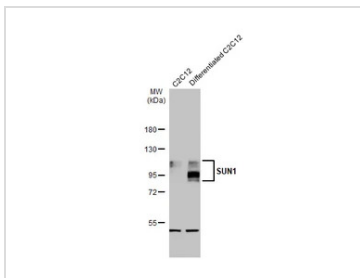
GTX637784 IHC-P Image

SUN1 antibody [HL1947] detects SUN1 protein at nucleus by immunohistochemical analysis.

Sample: Paraffin-embedded human breast carcinoma.

SUN1 stained by SUN1 antibody [HL1947] (GTX637784) diluted at 1:100.

Antigen Retrieval: Citrate buffer, pH 6.0, 15 min

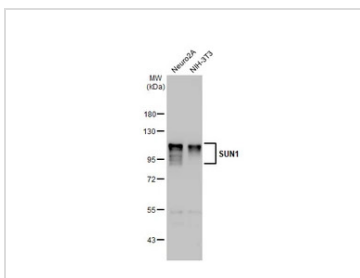


GTX637784 WB Image

Various whole cell extracts (30 µg) were separated by 7.5% SDS-PAGE, and the membrane was blotted with SUN1 antibody [HL1947] (GTX637784) diluted at 1:1000. The HRP-conjugated anti-rabbit IgG antibody (GTX213110-01) was used to detect the primary antibody.

Multiple bands were observed 80, 90kDa, and 100 kDa. It is possibly due to alternative splicing.

Reference: PMID: 31686651

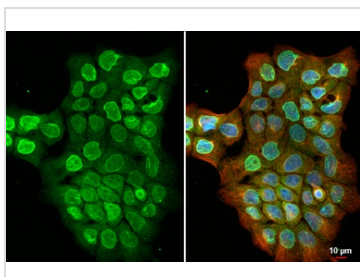


GTX637784 WB Image

Various whole cell extracts (50 µg) were separated by 7.5% SDS-PAGE, and the membrane was blotted with SUN1 antibody [HL1947] (GTX637784) diluted at 1:1000. The HRP-conjugated anti-rabbit IgG antibody (GTX213110-01) was used to detect the primary antibody, and the signal was developed with Trident ECL plus-Enhanced.

Multiple bands were observed 80, 90kDa, and 100 kDa. It is possibly due to alternative splicing.

Reference: PMID: 31686651



GTX637784 ICC/IF Image

SUN1 antibody [HL1947] detects SUN1 protein at nuclear envelope by immunofluorescent analysis.

Sample: A431 cells were fixed in 4% paraformaldehyde at RT for 15 min.

Green: SUN1 stained by SUN1 antibody [HL1947] (GTX637784) diluted at 1:500.

Red: alpha Tubulin, a cytoskeleton marker, stained by alpha Tubulin antibody [GT114] (GTX628802) diluted at 1:1000.

Blue: Fluoroshield with DAPI (GTX30920).



For full product information, images and publications, please visit our [website](https://www.genetex.com).