

## CD32B antibody [HL1948]

Cat. No. GTX637785

Host	Rabbit
Clonality	Monoclonal
Isotype	IgG
Applications	WB, ICC/IF, IHC-P
Reactivity	Human, Rat

References ( 1 )

Package

100 µl, 25 µl

## Applications

## Application Note

\*Optimal dilutions/concentrations should be determined by the researcher.

Suggested dilution	Recommended dilution
WB	1:500-1:3000
ICC/IF	Assay dependent
IHC-P	Assay dependent

Not tested in other applications.

Observed MW (kDa)	42, 47 kDa.
Product Note	This antibody was raised against human CD32B Intracellular domain.

## Properties

Form	Liquid
Buffer	PBS
Preservative	No preservatives
Storage	Store as concentrated solution. Centrifuge briefly prior to opening vial. For short-term storage (1-2 weeks), store at 4°C. For long-term storage, aliquot and store at -20°C or below. Avoid multiple freeze-thaw cycles.
Concentration	2 mg/ml (Please refer to the vial label for the specific concentration.)
Immunogen	Synthetic peptide encompassing a sequence within the Intracellular domain of human CD32B. The exact sequence is proprietary.
Purification	Affinity purified by Protein A.
Conjugation	Unconjugated

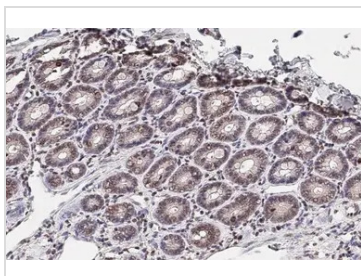


For full product information, images and publications, please visit our [website](#).

For laboratory research use only. Not for any clinical, therapeutic, or diagnostic use in humans or animals. Not for animal or human consumption.

**Note**

Purchasers shall not, and agree not to enable third parties to, analyze, copy, reverse engineer or otherwise attempt to determine the structure or sequence of the product.

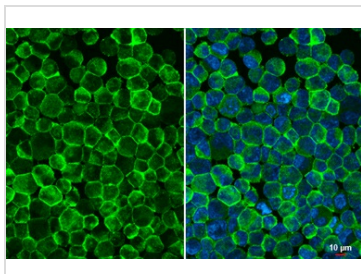
**DATA IMAGES**

**GTx637785 IHC-P Image**

CD32B antibody [HL1948] detects CD32B protein at cell membrane by immunohistochemical analysis.

Sample: Paraffin-embedded rat duodenum.

CD32B stained by CD32B antibody [HL1948] (GTx637785) diluted at 1:100.

Antigen Retrieval: Citrate buffer, pH 6.0, 15 min

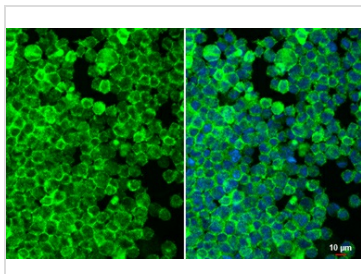

**GTx637785 ICC/IF Image**

CD32B antibody [HL1948] detects CD32B protein by immunofluorescent analysis.

Sample: K562 cells were fixed in 4% paraformaldehyde at RT for 15 min.

Green: CD32B stained by CD32B antibody [HL1948] (GTx637785) diluted at 1:500.

Blue: Fluoroshield with DAPI (GTx30920).

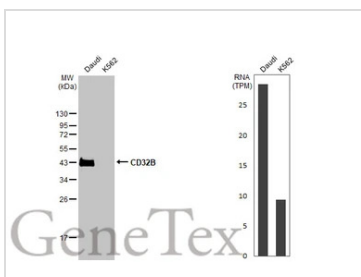

**GTx637785 ICC/IF Image**

CD32B antibody [HL1948] detects CD32B protein at cell membrane by immunofluorescent analysis.

Sample: U937 cells were fixed in 4% paraformaldehyde at RT for 15 min.

Green: CD32B stained by CD32B antibody [HL1948] (GTx637785) diluted at 1:1000.

Blue: Fluoroshield with DAPI (GTx30920).


**GTx637785 WB Image**

Various whole cell extracts (30 μg) were separated by 12% SDS-PAGE, and the membrane was blotted with CD32B antibody [HL1948] (GTx637785) diluted at 1:1000. The HRP-conjugated anti-rabbit IgG antibody (GTx213110-01) was used to detect the primary antibody. Corresponding RNA expression data for the same cell lines are based on Human Protein Atlas program.



For full product information, images and publications, please visit our [website](https://www.genetex.com).