

# Influenza A virus Nucleoprotein antibody [HL1953]

**Cat. No. GTX637790**

<b>Host</b>	Rabbit
<b>Clonality</b>	Monoclonal
<b>Isotype</b>	IgG
<b>Applications</b>	Lateral Flow
<b>Reactivity</b>	Influenza A virus

**Package**

100 µl, 25 µl

## Applications

### Application Note

\*Optimal dilutions/concentrations should be determined by the researcher.

Suggested dilution	Recommended dilution
Lateral Flow	Assay dependent

**Note : Capture : GTX636199 / GTX636247, Decton : GTX637790**

**Please notice that the detection antibodies need to be conjugated to Gold to function when paired with capture antibodies. Please contact us for custom Gold-conjugated antibody.**

Not tested in other applications.

### Product Note

This antibody is specific for Influenza A virus Nucleoprotein protein (H1N1 and H3N2), and it does not cross-react with SARS-CoV-2 and Influenza B virus Nucleoprotein protein.

## Properties

<b>Form</b>	Liquid
<b>Buffer</b>	PBS
<b>Preservative</b>	No preservatives
<b>Storage</b>	Store as concentrated solution. Centrifuge briefly prior to opening vial. For short-term storage (1-2 weeks), store at 4°C. For long-term storage, aliquot and store at -20°C or below. Avoid multiple freeze-thaw cycles.
<b>Concentration</b>	2 mg/ml (Please refer to the vial label for the specific concentration.)
<b>Immunogen</b>	Full length Influenza A virus Nucleoprotein ( A/California/2009/H1N1))
<b>Purification</b>	Affinity purified by Protein A.
<b>Conjugation</b>	Unconjugated

### Note

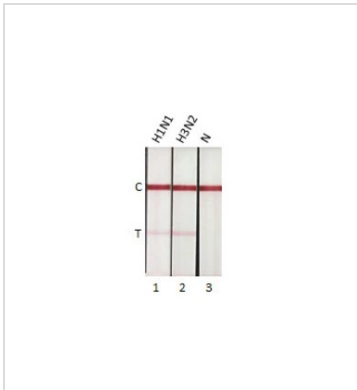
For laboratory research use only. Not for any clinical, therapeutic, or diagnostic use in humans or animals. Not for animal or human consumption.

Purchasers shall not, and agree not to enable third parties to, analyze, copy, reverse engineer or otherwise attempt to determine the structure or sequence of the product.



For full product information, images and publications, please visit our [website](#).

## DATA IMAGES



### GTX637790 Lateral Flow Image

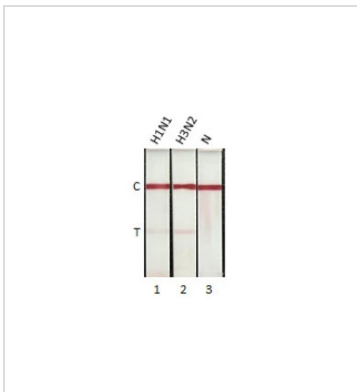
Detection of influenza A virus nucleoprotein by lateral flow assay using the monoclonal antibody pair.

**Capture:** Influenza A virus Nucleoprotein antibody (GTX636199 [HL1078])

**Detection:** Influenza A virus Nucleoprotein antibody (GTX637790 [HL1953])

#### Samples (1 ng) :

1. Influenza A virus Nucleoprotein (A/California/2009 (H1N1)) (GTX135904-pro)
2. Influenza A virus Nucleoprotein (A/Hong Kong/2671/2019 (H3N2)) (GTX136317-pro)
3. Lysis buffer



### GTX637790 Lateral Flow Image

Detection of influenza A virus nucleoprotein by lateral flow assay using the monoclonal antibody pair.

**Capture:** Influenza A virus Nucleoprotein antibody (GTX636247 [HL1089])

**Detection:** Influenza A virus Nucleoprotein antibody (GTX637790 [HL1953])

#### Samples (1 ng) :

1. Influenza A virus Nucleoprotein (A/California/2009 (H1N1)) (GTX135904-pro)
2. Influenza A virus Nucleoprotein (A/Hong Kong/2671/2019 (H3N2)) (GTX136317-pro)
3. Lysis buffer



For full product information, images and publications, please visit our [website](https://www.genetex.com).