

TCF3 / E2A antibody [HL1954]

Cat. No. GTX637791

Host	Rabbit
Clonality	Monoclonal
Isotype	IgG
Applications	WB, ICC/IF
Reactivity	Human

References (2)

Package

100 µl, 25 µl

Applications

Application Note

*Optimal dilutions/concentrations should be determined by the researcher.

Suggested dilution	Recommended dilution
WB	1:500-1:3000
ICC/IF	Assay dependent

Not tested in other applications.

Observed MW (kDa) 68-75 kDa.

Properties

Form	Liquid
Buffer	PBS
Preservative	No preservatives
Storage	Store as concentrated solution. Centrifuge briefly prior to opening vial. For short-term storage (1-2 weeks), store at 4°C. For long-term storage, aliquot and store at -20°C or below. Avoid multiple freeze-thaw cycles.
Concentration	1 mg/ml (Please refer to the vial label for the specific concentration.)
Immunogen	Recombinant fragment of human TCF3 / E2A
Purification	Affinity purified by Protein A.
Conjugation	Unconjugated

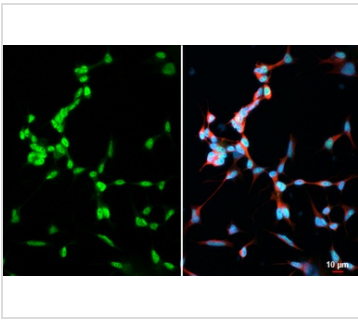
Note

For laboratory research use only. Not for any clinical, therapeutic, or diagnostic use in humans or animals. Not for animal or human consumption.

Purchasers shall not, and agree not to enable third parties to, analyze, copy, reverse engineer or otherwise attempt to determine the structure or sequence of the product.

For full product information, images and publications, please visit our [website](#).

DATA IMAGES



GTX637791 ICC/IF Image

TCF3 / E2A antibody [HL1954] detects TCF3 / E2A protein by immunofluorescent analysis.

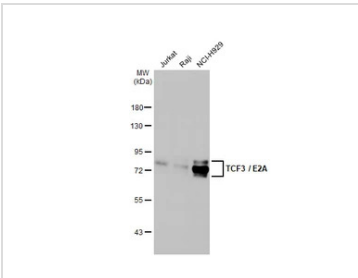
Sample: SH-SY-5Y cells were fixed in 4% paraformaldehyde at RT for 15 min.

Green: TCF3 / E2A stained by TCF3 / E2A antibody [HL1954] (GTX637791) diluted at 1:500.

Red: alpha Tubulin, a cytoskeleton marker, stained by alpha Tubulin antibody [GT114] (GTX628802) diluted at 1:1000.

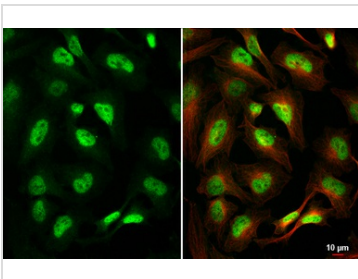
Blue: Fluoroshield with DAPI (GTX30920).

Scale bar= 10µm.



GTX637791 WB Image

Various whole cell extracts (30 µg) were separated by 7.5% SDS-PAGE, and the membrane was blotted with TCF3 / E2A antibody [HL1954] (GTX637791) diluted at 1:1000. The HRP-conjugated anti-rabbit IgG antibody (GTX213110-01) was used to detect the primary antibody, and the signal was developed with Trident ECL plus-Enhanced.



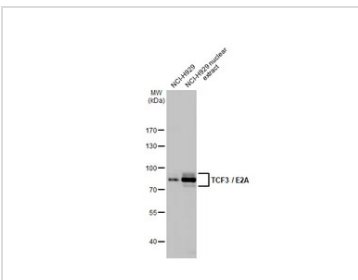
GTX637791 ICC/IF Image

TCF3 / E2A antibody [HL1954] detects TCF3 / E2A protein at cytoplasm and nucleus by immunofluorescent analysis.

Sample: HeLa cells were fixed in 4% paraformaldehyde at RT for 15 min.

Green: TCF3 / E2A stained by TCF3 / E2A antibody [HL1954] (GTX637791) diluted at 1:500.

Red: alpha Tubulin, a cytoskeleton marker, stained by alpha Tubulin antibody [GT114] (GTX628802) diluted at 1:1000.



GTX637791 WB Image

NCI-H929 whole cell and nuclear extracts (30 µg) were separated by 7.5% SDS-PAGE, and the membrane was blotted with TCF3 / E2A antibody [HL1954] (GTX637791) diluted at 1:1000. The HRP-conjugated anti-rabbit IgG antibody (GTX213110-01) was used to detect the primary antibody.



For full product information, images and publications, please visit our [website](#).