

IGF1R beta antibody [HL1957]

Cat. No. GTX637794

Host	Rabbit
Clonality	Monoclonal
Isotype	IgG
Applications	WB, ICC/IF, IHC-P
Reactivity	Human, Mouse, Rat

★★★★★ Review (1)

Package
100 µl, 25 µl

Applications

Application Note

*Optimal dilutions/concentrations should be determined by the researcher.

Suggested dilution	Recommended dilution
WB	Assay dependent
ICC/IF	1:100-1:1000
IHC-P	Assay dependent

Not tested in other applications.

Observed MW (kDa) 100 (mature form), 200/230 (Pro-form) kDa.**Product Note** This antibody was raised against human IGF1R Extracellular domain.

Properties

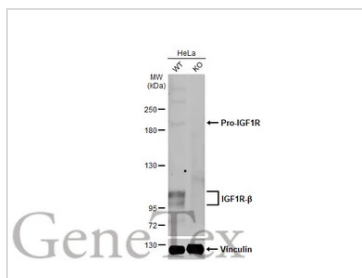
Form	Liquid
Buffer	PBS
Preservative	No preservatives
Storage	Store as concentrated solution. Centrifuge briefly prior to opening vial. For short-term storage (1-2 weeks), store at 4°C. For long-term storage, aliquot and store at -20°C or below. Avoid multiple freeze-thaw cycles.
Concentration	2 mg/ml (Please refer to the vial label for the specific concentration.)
Immunogen	Recombinant protein encompassing a sequence within the Extracellular domain of human IGF1R. The exact sequence is proprietary.
Purification	Affinity purified by Protein A.
Conjugation	Unconjugated

For full product information, images and publications, please visit our [website](#).

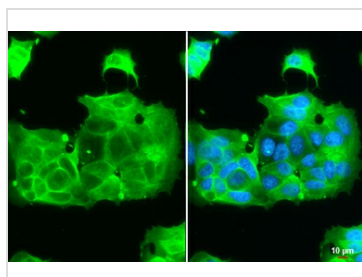
For laboratory research use only. Not for any clinical, therapeutic, or diagnostic use in humans or animals. Not for animal or human consumption.

Note

Purchasers shall not, and agree not to enable third parties to, analyze, copy, reverse engineer or otherwise attempt to determine the structure or sequence of the product.

DATA IMAGES

GTX637794 WB Image

Wild-type (WT) and IGF1R knockout (KO) HeLa cell extracts (30 µg) were separated by 5% SDS-PAGE, and the membrane was blotted with IGF1R beta antibody [HL1957] (GTX637794) diluted at 1:1000. The HRP-conjugated anti-rabbit IgG antibody (GTX213110-01) was used to detect the primary antibody, and the signal was developed with Trident ECL plus-Enhanced.


GTX637794 ICC/IF Image

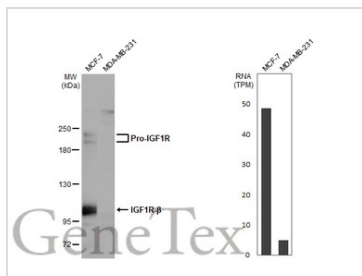
IGF1R beta antibody [HL1957] detects IGF1R beta protein at cell membrane by immunofluorescent analysis.

Sample: MCF-7 cells were fixed in 4% paraformaldehyde at RT for 15 min.

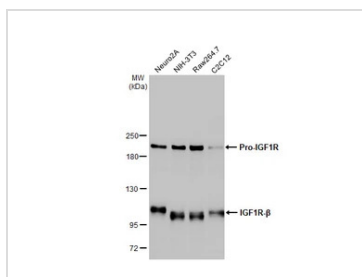
Green: IGF1R beta stained by IGF1R beta antibody [HL1957] (GTX637794) diluted at 1:1000.

Blue: Fluoroshield with DAPI (GTX30920).

Scale bar= 10µm.


GTX637794 WB Image

Various whole cell extracts (30 µg) were separated by 5% SDS-PAGE, and the membrane was blotted with IGF1R beta antibody [HL1957] (GTX637794) diluted at 1:500. The HRP-conjugated anti-rabbit IgG antibody (GTX213110-01) was used to detect the primary antibody. Corresponding RNA expression data for the same cell lines are based on Human Protein Atlas program.


GTX637794 WB Image

Various whole cell extracts (30 µg) were separated by 5% SDS-PAGE, and the membrane was blotted with IGF1R beta antibody [HL1957] (GTX637794) diluted at 1:1000. The HRP-conjugated anti-rabbit IgG antibody (GTX213110-01) was used to detect the primary antibody.



For full product information, images and publications, please visit our [website](https://www.genetex.com).