

## Vinculin antibody [HL1964]

**Cat. No. GTX637857**

|                     |                             |
|---------------------|-----------------------------|
| <b>Host</b>         | Rabbit                      |
| <b>Clonality</b>    | Monoclonal                  |
| <b>Isotype</b>      | IgG                         |
| <b>Applications</b> | WB, ICC/IF, IHC-P           |
| <b>Reactivity</b>   | Human, Mouse, Rat, Cat, Dog |

References ( 2 )

Package

100 µl, 25 µl

## Applications

**Application Note**

\*Optimal dilutions/concentrations should be determined by the researcher.

| Suggested dilution | Recommended dilution |
|--------------------|----------------------|
| WB                 | 1:500-1:3000         |
| ICC/IF             | Assay dependent      |
| IHC-P              | Assay dependent      |

Not tested in other applications.

**Observed MW (kDa)** 124 kDa.

## Properties

|                      |  |
|----------------------|--|
| <b>Form</b>          | Liquid   |
| <b>Buffer</b>        | PBS  |
| <b>Preservative</b>  | No preservatives   |
| <b>Storage</b>       | Store as concentrated solution. Centrifuge briefly prior to opening vial. For short-term storage (1-2 weeks), store at 4°C. For long-term storage, aliquot and store at -20°C or below. Avoid multiple freeze-thaw cycles. |
| <b>Concentration</b> | 1 mg/ml (Please refer to the vial label for the specific concentration.)   |
| <b>Immunogen</b>     | Recombinant fragment of human Vinculin   |
| <b>Purification</b>  | Affinity purified by Protein A.  |
| <b>Conjugation</b>   | Unconjugated   |

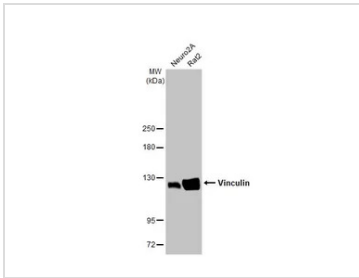
**Note**

For laboratory research use only. Not for any clinical, therapeutic, or diagnostic use in humans or animals. Not for animal or human consumption.

Purchasers shall not, and agree not to enable third parties to, analyze, copy, reverse engineer or otherwise attempt to determine the structure or sequence of the product.

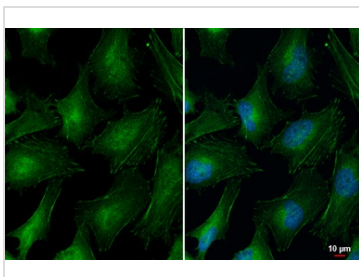
For full product information, images and publications, please visit our [website](#).

DATA IMAGES



**GTX637857 WB Image**

Various whole cell extracts (30 µg) were separated by 5% SDS-PAGE, and the membrane was blotted with Vinculin antibody [HL1964] (GTX637857) diluted at 1:1000. The HRP-conjugated anti-rabbit IgG antibody (GTX213110-01) was used to detect the primary antibody.



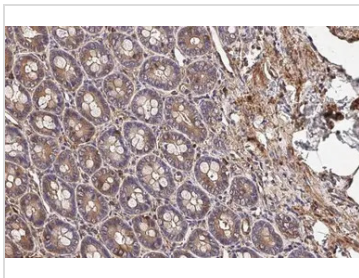
**GTX637857 ICC/IF Image**

Vinculin antibody [HL1964] detects Vinculin protein at cell junction by immunofluorescent analysis.

Sample: HeLa cells were fixed in 4% paraformaldehyde at RT for 15 min.

Green: Vinculin stained by Vinculin antibody [HL1964] (GTX637857) diluted at 1:500.

Blue: Fluoroshield with DAPI (GTX30920).



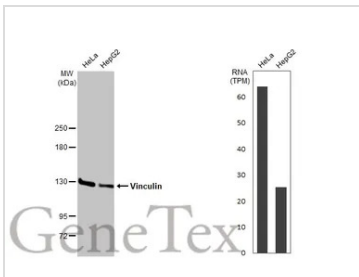
**GTX637857 IHC-P Image**

Vinculin antibody [HL1964] detects Vinculin protein at cell membrane and cytoplasm by immunohistochemical analysis.

Sample: Paraffin-embedded rat duodenum.

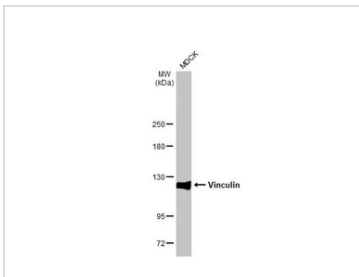
Vinculin stained by Vinculin antibody [HL1964] (GTX637857) diluted at 1:100.

Antigen Retrieval: Citrate buffer, pH 6.0, 15 min



**GTX637857 WB Image**

Various whole cell extracts (30 µg) were separated by 5% SDS-PAGE, and the membrane was blotted with Vinculin antibody [HL1964] (GTX637857) diluted at 1:1000. The HRP-conjugated anti-rabbit IgG antibody (GTX213110-01) was used to detect the primary antibody. Corresponding RNA expression data for the same cell lines are based on Human Protein Atlas program.



**GTX637857 WB Image**

Whole cell extract (30 µg) was separated by 5% SDS-PAGE, and the membrane was blotted with Vinculin antibody [HL1964] (GTX637857) diluted at 1:1000. The HRP-conjugated anti-rabbit IgG antibody (GTX213110-01) was used to detect the primary antibody.



For full product information, images and publications, please visit our [website](#).