

PCNA antibody [HL1965]

Cat. No. GTX637858

Host	Rabbit
Clonality	Monoclonal
Isotype	IgG
Applications	WB, IHC-P, IHC-Fr
Reactivity	Human, Mouse, Rat, Zebrafish, Cat, Dog, Japanese Medaka

Package
100 µl, 25 µl

Applications

Application Note

*Optimal dilutions/concentrations should be determined by the researcher.

Suggested dilution	Recommended dilution
WB	1:500-1:3000
IHC-P	Assay dependent
IHC-Fr	Assay dependent

Not tested in other applications.

Observed MW (kDa) 36 kDa.

Properties

Form	Liquid
Buffer	PBS
Preservative	No preservatives
Storage	Store as concentrated solution. Centrifuge briefly prior to opening vial. For short-term storage (1-2 weeks), store at 4°C. For long-term storage, aliquot and store at -20°C or below. Avoid multiple freeze-thaw cycles.
Concentration	1 mg/ml (Please refer to the vial label for the specific concentration.)
Immunogen	Recombinant fragment of human PCNA
Purification	Affinity purified by Protein A.
Conjugation	Unconjugated

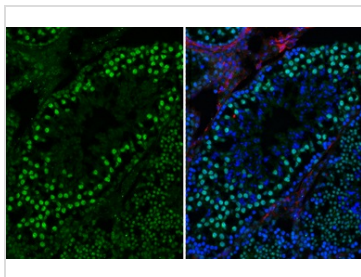
Note

For laboratory research use only. Not for any clinical, therapeutic, or diagnostic use in humans or animals. Not for animal or human consumption.

Purchasers shall not, and agree not to enable third parties to, analyze, copy, reverse engineer or otherwise attempt to determine the structure or sequence of the product.



For full product information, images and publications, please visit our [website](#).

DATA IMAGES

GTX637858 IHC-Fr Image

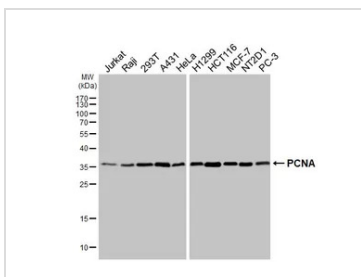
PCNA antibody [HL1965] detects PCNA protein by immunohistochemical analysis.

Sample: Frozen-sectioned mouse testis.

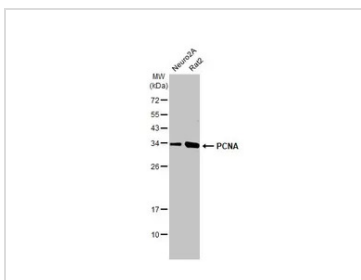
Green: PCNA stained by PCNA antibody [HL1965] (GTX637858) diluted at 1:200.

Red: Vimentin antibody [GT812] (GTX629744) diluted at 1:1000.

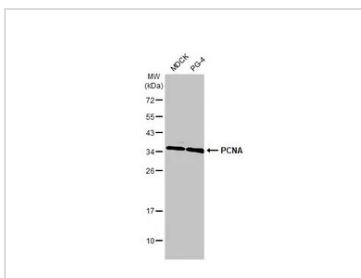
Blue: Hoechst 33342 staining.


GTX637858 WB Image

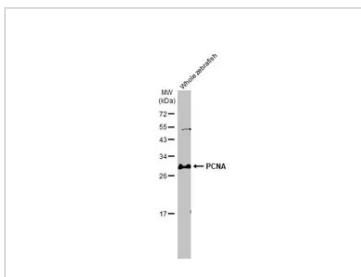
Various whole cell extracts (30 µg) were separated by 12% SDS-PAGE, and the membrane was blotted with PCNA antibody [HL1965] (GTX637858) diluted at 1:1000. The HRP-conjugated anti-rabbit IgG antibody (GTX213110-01) was used to detect the primary antibody.


GTX637858 WB Image

Various whole cell extracts (30 µg) were separated by 12% SDS-PAGE, and the membrane was blotted with PCNA antibody [HL1965] (GTX637858) diluted at 1:1000. The HRP-conjugated anti-rabbit IgG antibody (GTX213110-01) was used to detect the primary antibody.


GTX637858 WB Image

Various whole cell extracts (30 µg) were separated by 12% SDS-PAGE, and the membrane was blotted with PCNA antibody [HL1965] (GTX637858) diluted at 1:1000. The HRP-conjugated anti-rabbit IgG antibody (GTX213110-01) was used to detect the primary antibody.


GTX637858 WB Image

Whole zebrafish extract (30 µg) was separated by 12% SDS-PAGE, and the membrane was blotted with PCNA antibody [HL1965] (GTX637858) diluted at 1:1000. The HRP-conjugated anti-rabbit IgG antibody (GTX213110-01) was used to detect the primary antibody.



For full product information, images and publications, please visit our [website](https://www.genetex.com).