

SLC1A5 antibody [HL1988]

Cat. No. GTX637889

Host	Rabbit
Clonality	Monoclonal
Isotype	IgG
Applications	WB, ICC/IF, IHC-P
Reactivity	Human, Mouse, Cat

★★★★☆ Review (1)

Package
100 µl, 25 µl

Applications

Application Note

*Optimal dilutions/concentrations should be determined by the researcher.

Suggested dilution	Recommended dilution
WB	1:500-1:3000
ICC/IF	Assay dependent
IHC-P	Assay dependent

Not tested in other applications.

Observed MW (kDa) 48 (non-glycosylated form), 70-95 (glycosylated form) kDa.

Product Note This antibody was raised against human SLC1A5 Intracellular domain.

Properties

Form	Liquid
Buffer	PBS
Preservative	No preservatives
Storage	Store as concentrated solution. Centrifuge briefly prior to opening vial. For short-term storage (1-2 weeks), store at 4°C. For long-term storage, aliquot and store at -20°C or below. Avoid multiple freeze-thaw cycles.
Concentration	1 mg/ml (Please refer to the vial label for the specific concentration.)
Immunogen	Recombinant protein encompassing a sequence within the Intracellular domain of human SLC1A5. The exact sequence is proprietary.
Purification	Affinity purified by Protein A.
Conjugation	Unconjugated



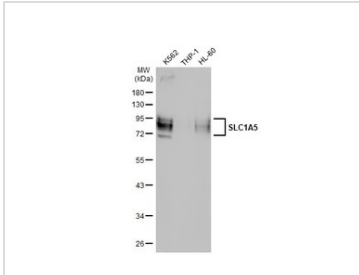
For full product information, images and publications, please visit our [website](#).

For laboratory research use only. Not for any clinical, therapeutic, or diagnostic use in humans or animals. Not for animal or human consumption.

Note

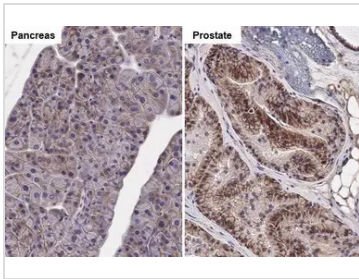
Purchasers shall not, and agree not to enable third parties to, analyze, copy, reverse engineer or otherwise attempt to determine the structure or sequence of the product.

DATA IMAGES



GTX637889 WB Image

Various whole cell extracts (30 µg) were separated by 10% SDS-PAGE, and the membrane was blotted with SLC1A5 antibody [HL1988] (GTX637889) diluted at 1:2000. The HRP-conjugated anti-rabbit IgG antibody (GTX213110-01) was used to detect the primary antibody.



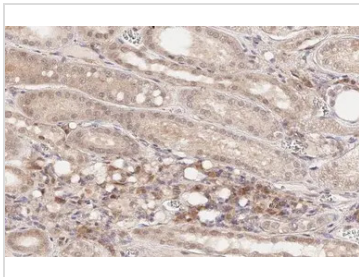
GTX637889 IHC-P Image

SLC1A5 antibody [HL1988] detects SLC1A5 protein at cell membrane by immunohistochemical analysis.

Sample: Paraffin-embedded mouse tissues.

SLC1A5 stained by SLC1A5 antibody [HL1988] (GTX637889) diluted at 1:100.

Antigen Retrieval: Citrate buffer, pH 6.0, 15 min



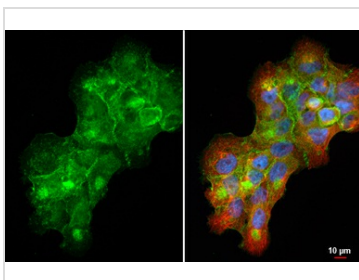
GTX637889 IHC-P Image

SLC1A5 antibody [HL1988] detects SLC1A5 protein at cell membrane and cytoplasm by immunohistochemical analysis.

Sample: Paraffin-embedded cat kidney.

SLC1A5 stained by SLC1A5 antibody [HL1988] (GTX637889) diluted at 1:100.

Antigen Retrieval: Citrate buffer, pH 6.0, 15 min



GTX637889 ICC/IF Image

SLC1A5 antibody [HL1988] detects SLC1A5 protein by immunofluorescent analysis.

Sample: A431 cells were fixed in 4% paraformaldehyde at RT for 15 min.

Green: SLC1A5 stained by SLC1A5 antibody [HL1988] (GTX637889) diluted at 1:500.

Red: alpha Tubulin, a cytoskeleton marker, stained by alpha Tubulin antibody [GT114] (GTX628802) diluted at 1:1000.

Blue: Fluoroshield with DAPI (GTX30920).



For full product information, images and publications, please visit our [website](#).