

## Influenza A virus PB2 protein antibody [HL1994]

Cat. No. GTX637895

Host	Rabbit
Clonality	Monoclonal
Isotype	IgG
Applications	WB, ICC/IF
Reactivity	Influenza A virus

Package  
100 µl, 25 µl

## Applications

## Application Note

\*Optimal dilutions/concentrations should be determined by the researcher.

Suggested dilution	Recommended dilution
WB	Assay dependent
ICC/IF	Assay dependent

Not tested in other applications.

## Product Note

This antibody was raised against the Influenza A virus H1N1 PB2 protein. (strain: A/Puerto Rico/8/1934). It is able to detect some Influenza A virus H3N2 strains, but it does not cross-react with Influenza B virus Nucleoprotein protein.

## Properties

Form	Liquid
Buffer	PBS
Preservative	No preservatives
Storage	Store as concentrated solution. Centrifuge briefly prior to opening vial. For short-term storage (1-2 weeks), store at 4°C. For long-term storage, aliquot and store at -20°C or below. Avoid multiple freeze-thaw cycles.
Concentration	1 mg/ml (Please refer to the vial label for the specific concentration.)
Immunogen	Recombinant fragment of Influenza A virus PB2 protein. (Influenza A virus (A/Puerto Rico/8/1934(H1N1)))
Purification	Affinity purified by Protein A.
Conjugation	Unconjugated

## Note

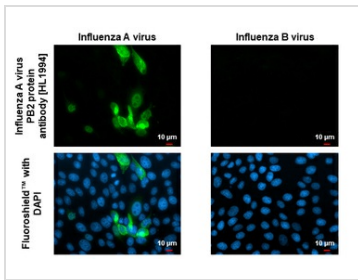
For laboratory research use only. Not for any clinical, therapeutic, or diagnostic use in humans or animals. Not for animal or human consumption.

Purchasers shall not, and agree not to enable third parties to, analyze, copy, reverse engineer or otherwise attempt to determine the structure or sequence of the product.



For full product information, images and publications, please visit our [website](#).

DATA IMAGES



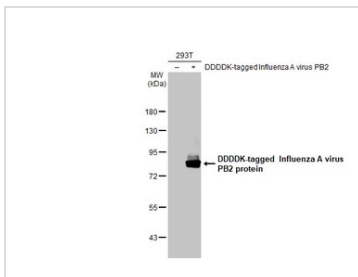
**GTX637895 ICC/IF Image**

Immunofluorescent analysis of Influenza virus infected cells using Influenza A virus PB2 protein antibody [HL1994] (GTX637895).

Sample: Influenza A and B virus infected cells slide.

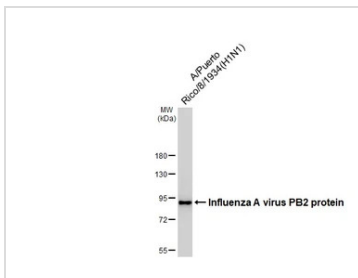
Green: Influenza A virus PB2 protein antibody [HL1994] (GTX637895) diluted at 1:100.

Blue: Fluoreshield with DAPI (GTX30920).



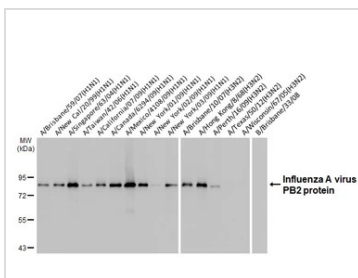
**GTX637895 WB Image**

Non-transfected (–) and transfected (+) 293T whole cell extracts (30 µg) were separated by 7.5% SDS-PAGE, and the membrane was blotted with Influenza A virus PB2 protein antibody [HL1994] (GTX637895) diluted at 1:100000. The HRP-conjugated anti-rabbit IgG antibody (GTX213110-01) was used to detect the primary antibody.



**GTX637895 WB Image**

Influenza A (A/Puerto Rico/8/1934(H1N1)) viral lysate was separated by 7.5% SDS-PAGE, and the membrane was blotted with Influenza A virus PB2 protein antibody [HL1994] (GTX637895) diluted at 1:10000. The HRP-conjugated anti-rabbit IgG antibody (GTX213110-01) was used to detect the primary antibody.



**GTX637895 WB Image**

Influenza A viral lysates and Influenza B viral lysate (1 µg) were separated by 7.5% SDS-PAGE, and the membrane was blotted with Influenza A virus PB2 protein antibody [HL1994] (GTX637895) diluted at 1:1000. The HRP-conjugated anti-rabbit IgG antibody (GTX213110-01) was used to detect the primary antibody.



For full product information, images and publications, please visit our [website](https://www.genetex.com).