

Choline Acetyltransferase antibody [HL2014]

Cat. No. GTX637915

Host	Rabbit
Clonality	Monoclonal
Isotype	IgG
Applications	ICC/IF, IHC-P
Reactivity	Mouse, Rat

 Review (1)Package
100 µl, 25 µl

Applications

Application Note

*Optimal dilutions/concentrations should be determined by the researcher.

Suggested dilution	Recommended dilution
ICC/IF	Assay dependent
IHC-P	Assay dependent

Not tested in other applications.

Observed MW (kDa) 71 kDa.

Properties

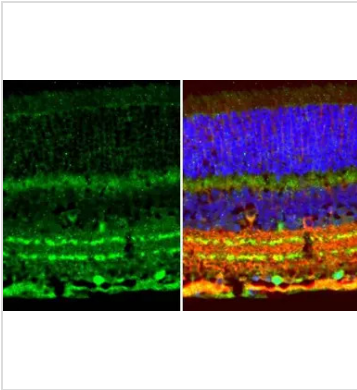
Form	Liquid
Buffer	PBS
Preservative	No preservatives
Storage	Store as concentrated solution. Centrifuge briefly prior to opening vial. For short-term storage (1-2 weeks), store at 4°C. For long-term storage, aliquot and store at -20°C or below. Avoid multiple freeze-thaw cycles.
Concentration	1 mg/ml (Please refer to the vial label for the specific concentration.)
Immunogen	Recombinant protein encompassing a sequence within the N-terminus region of human Choline Acetyltransferase. The exact sequence is proprietary.
Purification	Affinity purified by Protein A.
Conjugation	Unconjugated

Note

For laboratory research use only. Not for any clinical, therapeutic, or diagnostic use in humans or animals. Not for animal or human consumption.

Purchasers shall not, and agree not to enable third parties to, analyze, copy, reverse engineer or otherwise attempt to determine the structure or sequence of the product.

For full product information, images and publications, please visit our [website](#).

DATA IMAGES

GTX637915 IHC-P Image

Choline Acetyltransferase antibody [HL2014] detects Choline Acetyltransferase protein at cytoplasm and nucleus by immunohistochemical analysis.

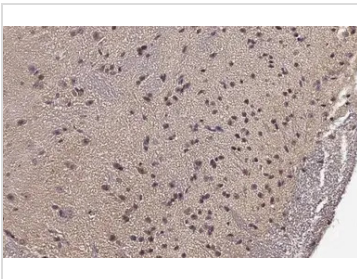
Sample: Paraffin-embedded mouse eye.

Green: Choline Acetyltransferase stained by Choline Acetyltransferase antibody [HL2014] (GTX637915) diluted at 1:100.

Red: Cytoskeleton, a GTX631836 marker, stained by beta Tubulin 3/ Tuj1 antibody [GT11710] (GTX631836_41855, 1, 500) diluted at 1:500.

Blue: Fluoroshield with DAPI (GTX30920).

Antigen Retrieval: Citrate buffer, pH 6.0, 15 min

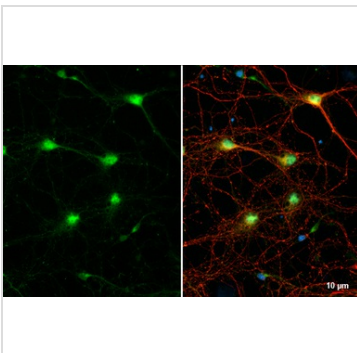

GTX637915 IHC-P Image

Choline Acetyltransferase antibody [HL2014] detects Choline Acetyltransferase protein at cytoplasm and nucleus by immunohistochemical analysis.

Sample: Paraffin-embedded mouse spinal cord.

Choline Acetyltransferase stained by Choline Acetyltransferase antibody [HL2014] (GTX637915) diluted at 1:100.

Antigen Retrieval: Citrate buffer, pH 6.0, 15 min


GTX637915 ICC/IF Image

Choline Acetyltransferase antibody [HL2014] detects Choline Acetyltransferase protein at cytoplasm by immunofluorescent analysis.

Sample: DIV9 rat E18 primary cortical neuron and glia cells were fixed in 4% paraformaldehyde at RT for 15 min.

Green: Choline Acetyltransferase stained by Choline Acetyltransferase antibody [HL2014] (GTX637915) diluted at 1:250.

Red: Tau, an Axon marker, stained by Tau antibody [GT287] (GTX634809) diluted at 1:500.

Blue: Fluoroshield with DAPI (GTX30920).



For full product information, images and publications, please visit our [website](https://www.genetex.com).