

HPRT antibody [HL2015]

Cat. No. GTX637916

Host	Rabbit
Clonality	Monoclonal
Isotype	IgG
Applications	WB, ICC/IF, IHC-P
Reactivity	Human, Mouse, Rat, Zebrafish, Cat, Dog

Package
100 µl, 25 µl

Applications

Application Note

*Optimal dilutions/concentrations should be determined by the researcher.

Suggested dilution	Recommended dilution
WB	1:500-1:3000
ICC/IF	Assay dependent
IHC-P	Assay dependent

Not tested in other applications.

Calculated MW 25 kDa. ([Note](#))

Properties

Form	Liquid
Buffer	PBS
Preservative	No preservative
Storage	Store as concentrated solution. Centrifuge briefly prior to opening vial. For short-term storage (1-2 weeks), store at 4°C. For long-term storage, aliquot and store at -20°C or below. Avoid multiple freeze-thaw cycles.
Concentration	1 mg/ml (Please refer to the vial label for the specific concentration.)
Immunogen	Recombinant fragment of human HPRT
Purification	Affinity purified by Protein A.
Conjugation	Unconjugated

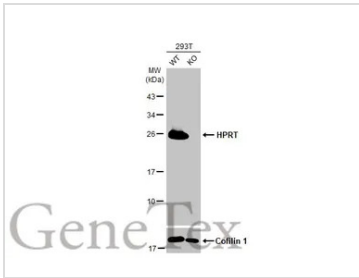
Note

For laboratory research use only. Not for any clinical, therapeutic, or diagnostic use in humans or animals. Not for animal or human consumption.

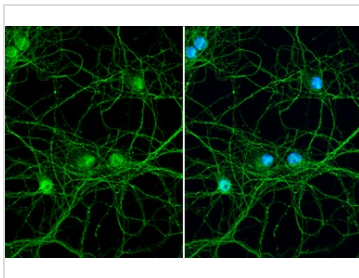
Purchasers shall not, and agree not to enable third parties to, analyze, copy, reverse engineer or otherwise attempt to determine the structure or sequence of the product.



For full product information, images and publications, please visit our [website](#).

DATA IMAGES

GTx637916 WB Image

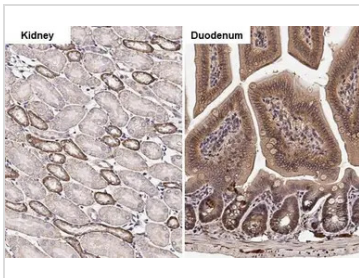
Wild-type (WT) and HPRT1 knockout (KO) 293T cell extracts (30 µg) were separated by 12% SDS-PAGE, and the membrane was blotted with HPRT antibody [HL2015] (GTx637916) diluted at 1:1000. The HRP-conjugated anti-rabbit IgG antibody (GTx213110-01) was used to detect the primary antibody.


GTx637916 ICC/IF Image

HPRT antibody [HL2015] detects HPRT protein at cell membrane by immunofluorescent analysis. Sample: DIV9 rat E18 primary hippocampal neuron cells were fixed in 4% paraformaldehyde at RT for 15 min.

Green: HPRT stained by HPRT antibody [HL2015] (GTx637916) diluted at 1:250.

Blue: Fluoroshield with DAPI (GTx30920).

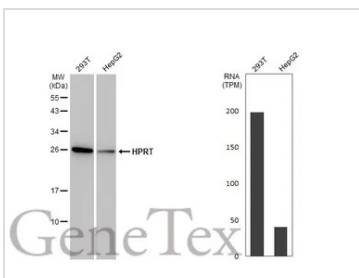

GTx637916 IHC-P Image

HPRT antibody [HL2015] detects HPRT protein at cell membrane by immunohistochemical analysis.

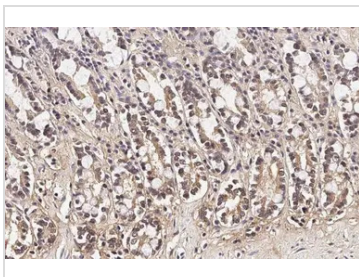
Sample: Paraffin-embedded mouse tissues.

HPRT stained by HPRT antibody [HL2015] (GTx637916) diluted at 1:100.

Antigen Retrieval: Citrate buffer, pH 6.0, 15 min


GTx637916 WB Image

Various whole cell extracts (30 µg) were separated by 12% SDS-PAGE, and the membrane was blotted with HPRT antibody [HL2015] (GTx637916) diluted at 1:2000. The HRP-conjugated anti-rabbit IgG antibody (GTx213110-01) was used to detect the primary antibody. Corresponding RNA expression data for the same cell lines are based on Human Protein Atlas program.


GTx637916 IHC-P Image

HPRT antibody [HL2015] detects HPRT protein at cytoplasm and nucleus by immunohistochemical analysis.

Sample: Paraffin-embedded cat intestine.

HPRT stained by HPRT antibody [HL2015] (GTx637916) diluted at 1:100.

Antigen Retrieval: Citrate buffer, pH 6.0, 15 min



For full product information, images and publications, please visit our [website](https://www.genetex.com).