

HPRT antibody [HL2015]

Cat. No. GTX637916

Host	Rabbit
Clonality	Monoclonal
Isotype	IgG
Applications	WB, ICC/IF, IHC-P
Reactivity	Human, Mouse, Rat, Zebrafish, Cat, Dog

Package
100 µl, 25 µl

Applications

Application Note

*Optimal dilutions/concentrations should be determined by the researcher.

Suggested dilution	Recommended dilution
WB	1:500-1:3000
ICC/IF	Assay dependent
IHC-P	Assay dependent

Not tested in other applications.

Calculated MW 25 kDa. ([Note](#))

Properties

Form	Liquid
Buffer	PBS
Preservative	No preservative
Storage	Store as concentrated solution. Centrifuge briefly prior to opening vial. For short-term storage (1-2 weeks), store at 4°C. For long-term storage, aliquot and store at -20°C or below. Avoid multiple freeze-thaw cycles.
Concentration	1 mg/ml (Please refer to the vial label for the specific concentration.)
Immunogen	Recombinant fragment of human HPRT
Purification	Affinity purified by Protein A.
Conjugation	Unconjugated

Note

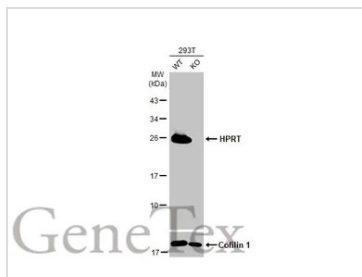
For laboratory research use only. Not for any clinical, therapeutic, or diagnostic use in humans or animals. Not for animal or human consumption.

Purchasers shall not, and agree not to enable third parties to, analyze, copy, reverse engineer or otherwise attempt to determine the structure or sequence of the product.



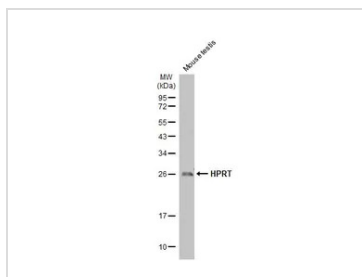
For full product information, images and publications, please visit our [website](#).

DATA IMAGES



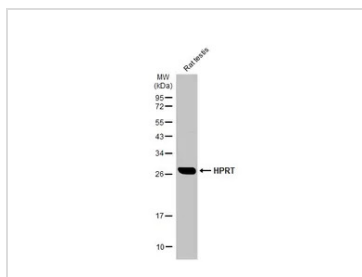
GTX637916 WB Image

Wild-type (WT) and HPRT1 knockout (KO) 293T cell extracts (30 μ g) were separated by 12% SDS-PAGE, and the membrane was blotted with HPRT antibody [HL2015] (GTX637916) diluted at 1:1000. The HRP-conjugated anti-rabbit IgG antibody (GTX213110-01) was used to detect the primary antibody.



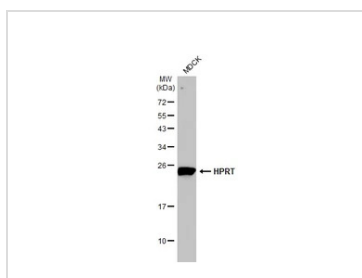
GTX637916 WB Image

Mouse tissue extract (50 μ g) was separated by 12% SDS-PAGE, and the membrane was blotted with HPRT antibody [HL2015] (GTX637916) diluted at 1:5000. The HRP-conjugated anti-rabbit IgG antibody (GTX213110-01) was used to detect the primary antibody.



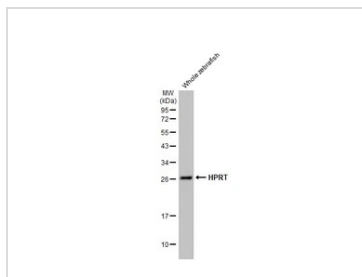
GTX637916 WB Image

Rat tissue extract (50 μ g) was separated by 12% SDS-PAGE, and the membrane was blotted with HPRT antibody [HL2015] (GTX637916) diluted at 1:5000. The HRP-conjugated anti-rabbit IgG antibody (GTX213110-01) was used to detect the primary antibody.



GTX637916 WB Image

Whole cell extract (30 μ g) was separated by 12% SDS-PAGE, and the membrane was blotted with HPRT antibody [HL2015] (GTX637916) diluted at 1:1000. The HRP-conjugated anti-rabbit IgG antibody (GTX213110-01) was used to detect the primary antibody.



GTX637916 WB Image

Whole zebrafish extract (30 μ g) was separated by 12% SDS-PAGE, and the membrane was blotted with HPRT antibody [HL2015] (GTX637916) diluted at 1:1000. The HRP-conjugated anti-rabbit IgG antibody (GTX213110-01) was used to detect the primary antibody.



For full product information, images and publications, please visit our [website](https://www.genetex.com).