

ISG15 antibody [HL2017]

Cat. No. GTX637918

Host	Rabbit
Clonality	Monoclonal
Isotype	IgG
Applications	WB, ICC/IF, IHC-P
Reactivity	Human, Mouse, Rat, Cat

Package
100 µl, 25 µl

Applications

Application Note

*Optimal dilutions/concentrations should be determined by the researcher.

Suggested dilution	Recommended dilution
WB	1:500-1:3000
ICC/IF	Assay dependent
IHC-P	Assay dependent

Not tested in other applications.

Observed MW (kDa) 15 kDa.

Properties

Form	Liquid
Buffer	PBS
Preservative	No preservatives
Storage	Store as concentrated solution. Centrifuge briefly prior to opening vial. For short-term storage (1-2 weeks), store at 4°C. For long-term storage, aliquot and store at -20°C or below. Avoid multiple freeze-thaw cycles.
Concentration	1 mg/ml (Please refer to the vial label for the specific concentration.)
Immunogen	Recombinant fragment of human ISG15
Purification	Affinity purified by Protein A.
Conjugation	Unconjugated

Note

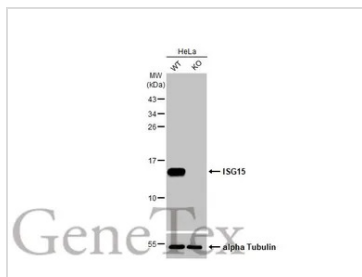
For laboratory research use only. Not for any clinical, therapeutic, or diagnostic use in humans or animals. Not for animal or human consumption.

Purchasers shall not, and agree not to enable third parties to, analyze, copy, reverse engineer or otherwise attempt to determine the structure or sequence of the product.



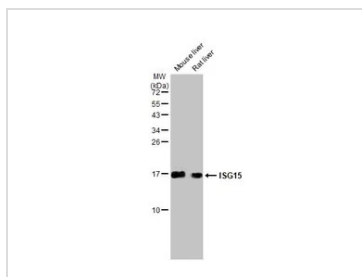
For full product information, images and publications, please visit our [website](#).

DATA IMAGES



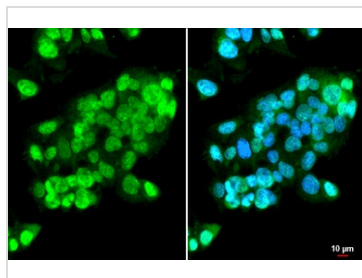
GTX637918 WB Image

Wild-type (WT) and ISG15 knockout (KO) HeLa cell extracts (30 μ g) were separated by 15% SDS-PAGE, and the membrane was blotted with ISG15 antibody [HL2017] (GTX637918) diluted at 1:1000. The HRP-conjugated anti-rabbit IgG antibody (GTX213110-01) was used to detect the primary antibody.



GTX637918 WB Image

Various tissue extracts (50 μ g) were separated by 15% SDS-PAGE, and the membrane was blotted with ISG15 antibody [HL2017] (GTX637918) diluted at 1:1000. The HRP-conjugated anti-rabbit IgG antibody (GTX213110-01) was used to detect the primary antibody.



GTX637918 ICC/IF Image

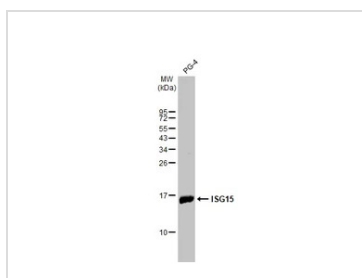
ISG15 antibody [HL2017] detects ISG15 protein at cytoplasm and nucleus by immunofluorescent analysis.

Sample: HepG2 cells were fixed in ice-cold MeOH for 5 min.

Green: ISG15 stained by ISG15 antibody [HL2017] (GTX637918) diluted at 1:500.

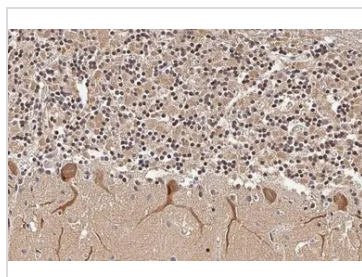
Blue: Fluoroshield with DAPI (GTX30920).

Scale bar = 10 μ m.



GTX637918 WB Image

Whole cell extract (30 μ g) was separated by 15% SDS-PAGE, and the membrane was blotted with ISG15 antibody [HL2017] (GTX637918) diluted at 1:1000. The HRP-conjugated anti-rabbit IgG antibody (GTX213110-01) was used to detect the primary antibody, and the signal was developed with Trident ECL plus-Enhanced.



GTX637918 IHC-P Image

ISG15 antibody [HL2017] detects ISG15 protein at cytoplasm by immunohistochemical analysis.

Sample: Paraffin-embedded cat brain.

ISG15 stained by ISG15 antibody [HL2017] (GTX637918) diluted at 1:100.

Antigen Retrieval: Citrate buffer, pH 6.0, 15 min



For full product information, images and publications, please visit our [website](https://www.genetex.com).