

# Mucin 4 antibody [HL2026]

**Cat. No. GTX637927**

<b>Host</b>	Rabbit
<b>Clonality</b>	Monoclonal
<b>Isotype</b>	IgG
<b>Applications</b>	WB, ICC/IF
<b>Reactivity</b>	Human

**Package**  
100 µl, 25 µl

## Applications

### Application Note

\*Optimal dilutions/concentrations should be determined by the researcher.

Suggested dilution	Recommended dilution
WB	1:500-1:100000
ICC/IF	Assay dependent

Not tested in other applications.

**Observed MW (kDa)** 130-180 (smear pattern) kDa.

## Properties

<b>Form</b>	Liquid
<b>Buffer</b>	PBS
<b>Preservative</b>	No preservatives
<b>Storage</b>	Store as concentrated solution. Centrifuge briefly prior to opening vial. For short-term storage (1-2 weeks), store at 4°C. For long-term storage, aliquot and store at -20°C or below. Avoid multiple freeze-thaw cycles.
<b>Concentration</b>	1 mg/ml (Please refer to the vial label for the specific concentration.)
<b>Immunogen</b>	Recombinant fragment of human Mucin 4 X + Mucin 4 Y.
<b>Purification</b>	Affinity purified by Protein A.
<b>Conjugation</b>	Unconjugated

### Note

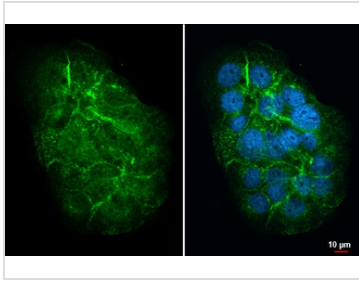
For laboratory research use only. Not for any clinical, therapeutic, or diagnostic use in humans or animals. Not for animal or human consumption.

Purchasers shall not, and agree not to enable third parties to, analyze, copy, reverse engineer or otherwise attempt to determine the structure or sequence of the product.



For full product information, images and publications, please visit our [website](#).

## DATA IMAGES



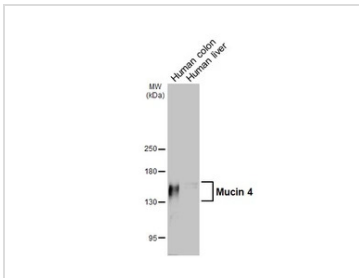
### GTX637927 ICC/IF Image

Mucin 4 X + Mucin 4 Y antibody [HL2026] detects Mucin 4 X + Mucin 4 Y protein at cell membrane by immunofluorescent analysis.

Sample: NCI-H441 cells were fixed in ice-cold MeOH for 5 min.

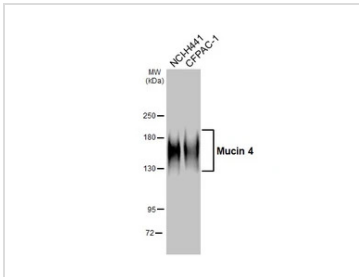
Green: Mucin 4 X + Mucin 4 Y stained by Mucin 4 X + Mucin 4 Y antibody [HL2026] (GTX637927) diluted at 1:500.

Blue: Fluoroshield with DAPI (GTX30920).



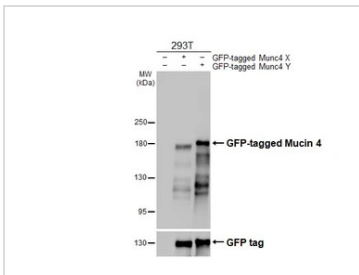
### GTX637927 WB Image

Various tissue extracts (30 µg) were separated by 5% SDS-PAGE, and the membrane was blotted with Mucin 4 antibody [HL2026] (GTX637927) diluted at 1:1000. The HRP-conjugated anti-rabbit IgG antibody (GTX213110-01) was used to detect the primary antibody.



### GTX637927 WB Image

Various whole cell extracts (30 µg) were separated by 5% SDS-PAGE, and the membrane was blotted with Mucin 4 antibody [HL2026] (GTX637927) diluted at 1:1000. The HRP-conjugated anti-rabbit IgG antibody (GTX213110-01) was used to detect the primary antibody.



### GTX637927 WB Image

Non-transfected (–) and transfected (+) 293T whole cell extracts were separated by 5% SDS-PAGE, and the membrane was blotted with Mucin 4 antibody [HL2026] (GTX637927) diluted at 1:100000. The HRP-conjugated anti-rabbit IgG antibody (GTX213110-01) was used to detect the primary antibody.



For full product information, images and publications, please visit our [website](https://www.genetex.com).