

HMGB1 antibody [HL2060]

Cat. No. GTX637964

Host	Rabbit
Clonality	Monoclonal
Isotype	IgG
Applications	WB, ICC/IF, IHC-P
Reactivity	Human, Mouse, Rat, Cat, Dog

Package
100 µl, 25 µl

Applications

Application Note

*Optimal dilutions/concentrations should be determined by the researcher.

Suggested dilution	Recommended dilution
WB	1:500-1:3000
ICC/IF	Assay dependent
IHC-P	Assay dependent

Not tested in other applications.

Observed MW (kDa) 29 kDa.

Properties

Form	Liquid
Buffer	PBS
Preservative	No preservative
Storage	Store as concentrated solution. Centrifuge briefly prior to opening vial. For short-term storage (1-2 weeks), store at 4°C. For long-term storage, aliquot and store at -20°C or below. Avoid multiple freeze-thaw cycles.
Concentration	1 mg/ml (Please refer to the vial label for the specific concentration.)
Immunogen	Carrier-protein conjugated synthetic peptide encompassing a sequence within the N-terminus region of human HMGB1. The exact sequence is proprietary.
Purification	Affinity purified by Protein A.
Conjugation	Unconjugated

Note

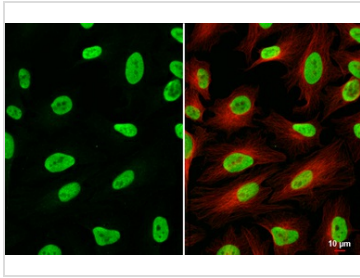
For laboratory research use only. Not for any clinical, therapeutic, or diagnostic use in humans or animals. Not for animal or human consumption.

Purchasers shall not, and agree not to enable third parties to, analyze, copy, reverse engineer or otherwise attempt to determine the structure or sequence of the product.



For full product information, images and publications, please visit our [website](#).

DATA IMAGES



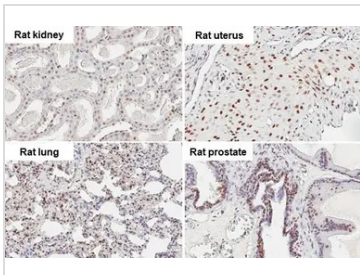
GTx637964 ICC/IF Image

HMGB1 antibody [HL2060] detects HMGB1 protein at nucleus by immunofluorescent analysis.

Sample: HeLa cells were fixed in 4% paraformaldehyde at RT for 15 min.

Green: HMGB1 stained by HMGB1 antibody [HL2060] (GTx637964) diluted at 1:500.

Red: alpha Tubulin, a cytoskeleton marker, stained by alpha Tubulin antibody [GT114] (GTx628802) diluted at 1:1000.



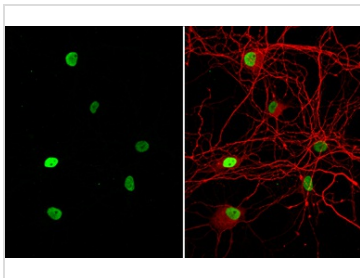
GTx637964 IHC-P Image

HMGB1 antibody [HL2060] detects HMGB1 protein by immunohistochemical analysis.

Sample: Paraffin-embedded rat tissue.

HMGB1 stained by HMGB1 antibody [HL2060] (GTx637964) diluted at 1:200.

Antigen Retrieval: Citrate buffer, pH 6.0, 15 min



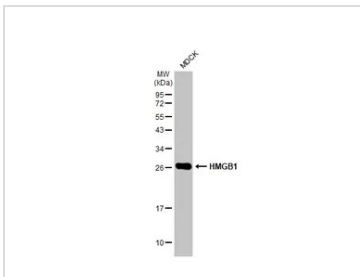
GTx637964 ICC/IF Image

HMGB1 antibody [HL2060] detects HMGB1 protein at nucleus by immunofluorescent analysis.

Sample: DIV9 rat E18 primary hippocampal neuron cells were fixed in 4% paraformaldehyde at RT for 15 min.

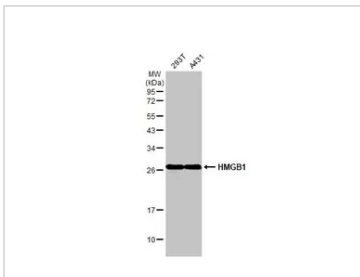
Green: HMGB1 stained by HMGB1 antibody [HL2060] (GTx637964) diluted at 1:250.

Red: Tau, an axon marker, stained by Tau antibody [GT287] (GTx634809) diluted at 1:500.



GTx637964 WB Image

Whole cell extract (30 µg) was separated by 12% SDS-PAGE, and the membrane was blotted with HMGB1 antibody [HL2060] (GTx637964) diluted at 1:1000. The HRP-conjugated anti-rabbit IgG antibody (GTx213110-01) was used to detect the primary antibody.



GTx637964 WB Image

Various whole cell extracts (30 µg) were separated by 12% SDS-PAGE, and the membrane was blotted with HMGB1 antibody [HL2060] (GTx637964) diluted at 1:1000. The HRP-conjugated anti-rabbit IgG antibody (GTx213110-01) was used to detect the primary antibody.



For full product information, images and publications, please visit our [website](https://www.genetex.com).