

## OAT antibody [HL2087]

Cat. No. GTX637995

Host	Rabbit
Clonality	Monoclonal
Isotype	IgG
Applications	WB, ICC/IF, IHC-P
Reactivity	Human, Mouse, Rat

Package  
100 µl, 25 µl

## Applications

## Application Note

\*Optimal dilutions/concentrations should be determined by the researcher.

Suggested dilution	Recommended dilution
WB	1:500-1:3000
ICC/IF	Assay dependent
IHC-P	Assay dependent

Not tested in other applications.

Observed MW (kDa) 49 kDa.

## Properties

Form	Liquid
Buffer	PBS
Preservative	No preservatives
Storage	Store as concentrated solution. Centrifuge briefly prior to opening vial. For short-term storage (1-2 weeks), store at 4°C. For long-term storage, aliquot and store at -20°C or below. Avoid multiple freeze-thaw cycles.
Concentration	1 mg/ml (Please refer to the vial label for the specific concentration.)
Immunogen	Recombinant fragment of human OAT
Purification	Affinity purified by Protein A.
Conjugation	Unconjugated

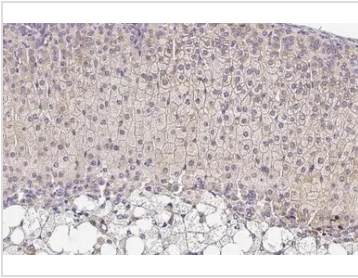
## Note

For laboratory research use only. Not for any clinical, therapeutic, or diagnostic use in humans or animals. Not for animal or human consumption.

Purchasers shall not, and agree not to enable third parties to, analyze, copy, reverse engineer or otherwise attempt to determine the structure or sequence of the product.



For full product information, images and publications, please visit our [website](#).

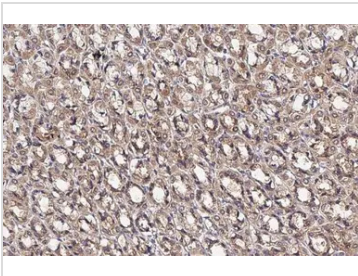
**DATA IMAGES**

**GTx637995 IHC-P Image**

OAT antibody [HL2087] detects OAT protein at cytoplasm by immunohistochemical analysis.

Sample: Paraffin-embedded mouse adrenal gland.

OAT stained by OAT antibody [HL2087] (GTx637995) diluted at 1:100.

Antigen Retrieval: Citrate buffer, pH 6.0, 15 min

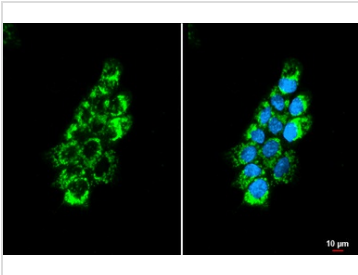

**GTx637995 IHC-P Image**

OAT antibody [HL2087] detects OAT protein at cytoplasm by immunohistochemical analysis.

Sample: Paraffin-embedded rat stomach.

OAT stained by OAT antibody [HL2087] (GTx637995) diluted at 1:100.

Antigen Retrieval: Citrate buffer, pH 6.0, 15 min


**GTx637995 ICC/IF Image**

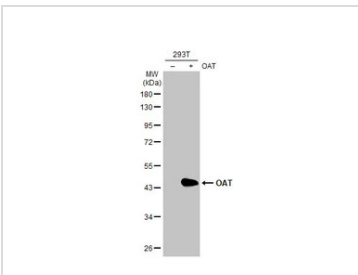
OAT antibody [HL2087] detects OAT protein at mitochondria by immunofluorescent analysis.

Sample: A431 cells were fixed in ice-cold MeOH for 5 min.

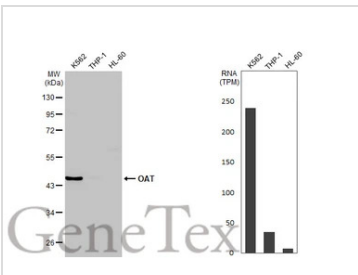
Green: OAT stained by OAT antibody [HL2087] (GTx637995) diluted at 1:500.

Blue: Fluoroshield with DAPI (GTx30920).

Scale bar= 10µm.


**GTx637995 WB Image**

Non-transfected (-) and transfected (+) 293T whole cell extracts (30 µg) were separated by 10% SDS-PAGE, and the membrane was blotted with OAT antibody [HL2087] (GTx637995) diluted at 1:5000. The HRP-conjugated anti-rabbit IgG antibody (GTx213110-01) was used to detect the primary antibody.


**GTx637995 WB Image**

Various whole cell extracts (30 µg) were separated by 10% SDS-PAGE, and the membrane was blotted with OAT antibody [HL2087] (GTx637995) diluted at 1:1000. The HRP-conjugated anti-rabbit IgG antibody (GTx213110-01) was used to detect the primary antibody, and the signal was developed with Trident ECL plus-Enhanced. Corresponding RNA expression data for the same cell lines are based on Human Protein Atlas program.



For full product information, images and publications, please visit our [website](https://www.genetex.com).