

## OAT antibody [HL2088]

Cat. No. GTX637996

Host	Rabbit
Clonality	Monoclonal
Isotype	IgG
Applications	WB, ICC/IF, IHC-P
Reactivity	Human, Mouse, Rat

Package  
100 µl, 25 µl

## Applications

## Application Note

\*Optimal dilutions/concentrations should be determined by the researcher.

Suggested dilution	Recommended dilution
WB	Assay dependent
ICC/IF	Assay dependent
IHC-P	1:100-1:1000

Not tested in other applications.

Observed MW (kDa) 49 kDa.

## Properties

Form	Liquid
Buffer	PBS
Preservative	No preservatives
Storage	Store as concentrated solution. Centrifuge briefly prior to opening vial. For short-term storage (1-2 weeks), store at 4°C. For long-term storage, aliquot and store at -20°C or below. Avoid multiple freeze-thaw cycles.
Concentration	1 mg/ml (Please refer to the vial label for the specific concentration.)
Immunogen	Recombinant fragment of human OAT
Purification	Affinity purified by Protein A.
Conjugation	Unconjugated

## Note

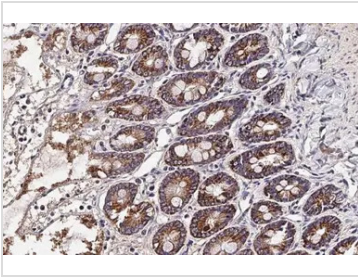
For laboratory research use only. Not for any clinical, therapeutic, or diagnostic use in humans or animals. Not for animal or human consumption.

Purchasers shall not, and agree not to enable third parties to, analyze, copy, reverse engineer or otherwise attempt to determine the structure or sequence of the product.



For full product information, images and publications, please visit our [website](#).

## DATA IMAGES



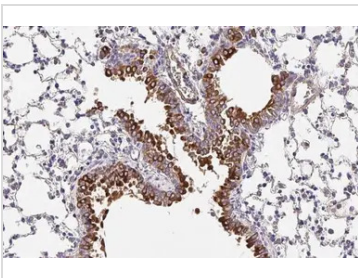
### GTX637996 IHC-P Image

OAT antibody [HL2088] detects OAT protein at cytoplasm by immunohistochemical analysis.

Sample: Paraffin-embedded rat duodenum.

OAT stained by OAT antibody [HL2088] (GTX637996) diluted at 1:100.

Antigen Retrieval: Citrate buffer, pH 6.0, 15 min



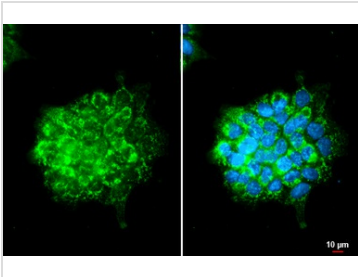
### GTX637996 IHC-P Image

OAT antibody [HL2088] detects OAT protein at cytoplasm by immunohistochemical analysis.

Sample: Paraffin-embedded mouse lung.

OAT stained by OAT antibody [HL2088] (GTX637996) diluted at 1:100.

Antigen Retrieval: Citrate buffer, pH 6.0, 15 min



### GTX637996 ICC/IF Image

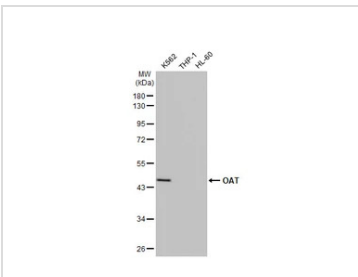
OAT antibody [HL2088] detects OAT protein at mitochondria and cytoplasm by immunofluorescent analysis.

Sample: A431 cells were fixed in ice-cold MeOH for 5 min.

Green: OAT stained by OAT antibody [HL2088] (GTX637996) diluted at 1:500.

Blue: Fluoroshield with DAPI (GTX30920).

Scale bar= 10µm.



### GTX637996 WB Image

Various whole cell extracts (30 µg) were separated by 10% SDS-PAGE, and the membrane was blotted with OAT antibody [HL2088] (GTX637996) diluted at 1:1000. The HRP-conjugated anti-rabbit IgG antibody (GTX213110-01) was used to detect the primary antibody.



For full product information, images and publications, please visit our [website](https://www.genetex.com).