

Dengue virus Envelope protein antibody [HL2089]

Cat. No. GTX637997

| | |
|--------------|--|
| Host | Rabbit |
| Clonality | Monoclonal |
| Isotype | IgG |
| Applications | WB, ICC/IF |
| Reactivity | Dengue virus 1, Dengue virus 2, Dengue virus 3, Dengue virus 4 |

★★★★★ Review (1)

Package
100 µl, 25 µl

Applications

Application Note

*Optimal dilutions/concentrations should be determined by the researcher.

| Suggested dilution | Recommended dilution |
|--------------------|----------------------|
| WB | 1:500-1:10000 |
| ICC/IF | Assay dependent |

Not tested in other applications.

Product Note

This antibody does not cross-react with YFV, JEV, Zika, and CHIKV Envelope protein. The validated Dengue virus serotype for each application may differ. Please refer to the validated data.

Properties

| | |
|---------------|--|
| Form | Liquid |
| Buffer | PBS |
| Preservative | No preservatives |
| Storage | Store as concentrated solution. Centrifuge briefly prior to opening vial. For short-term storage (1-2 weeks), store at 4°C. For long-term storage, aliquot and store at -20°C or below. Avoid multiple freeze-thaw cycles. |
| Concentration | 1 mg/ml (Please refer to the vial label for the specific concentration.) |
| Immunogen | Recombinant fragment of Dengue virus Envelope protein. (strain Thailand/16681/1984) |
| Purification | Affinity purified by Protein A. |
| Conjugation | Unconjugated |

Note

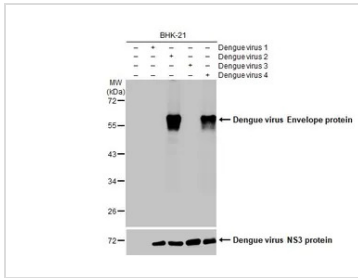
For laboratory research use only. Not for any clinical, therapeutic, or diagnostic use in humans or animals. Not for animal or human consumption.

Purchasers shall not, and agree not to enable third parties to, analyze, copy, reverse engineer or otherwise attempt to determine the structure or sequence of the product.



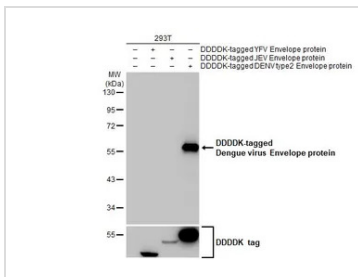
For full product information, images and publications, please visit our [website](#).

DATA IMAGES



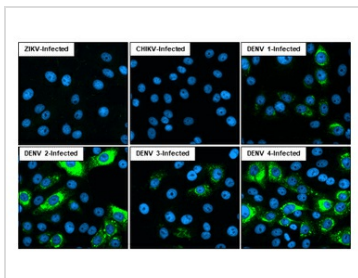
GTX637997 WB Image

Non-infected (–) and infected (+) BHK-21 whole cell extracts were separated by 10% SDS-PAGE, and the membrane was blotted with Dengue virus Envelope protein antibody [HL2089] (GTX637997) diluted at 1:1000. The HRP-conjugated anti-rabbit IgG antibody (GTX213110-01) was used to detect the primary antibody.



GTX637997 WB Image

Non-transfected (–) and transfected (+) 293T whole cell extracts were separated by 10% SDS-PAGE, and the membrane was blotted with Dengue virus Type 2 Envelope protein antibody [HL2089] (GTX637997) diluted at 1:5000. The HRP-conjugated anti-rabbit IgG antibody (GTX213110-01) was used to detect the primary antibody.



GTX637997 ICC/IF Image

Immunofluorescent analysis of Dengue virus infected cells using Dengue virus Envelope protein antibody [HL2089] antibody (GTX637997).

Sample: Multiple virus infected cells slide.

Green: Dengue virus Envelope protein antibody [HL2089] antibody (GTX637997) diluted at 1:100.

Blue: Fluoroshield with DAPI (GTX30920).



For full product information, images and publications, please visit our [website](https://www.genetex.com).