

NDUFS3 antibody [HL2097]

Cat. No. GTX638005

Host	Rabbit
Clonality	Monoclonal
Isotype	IgG
Applications	WB, ICC/IF, IHC-P
Reactivity	Human, Mouse, Rat, Zebrafish, Japanese Medaka

Package
100 µl, 25 µl

Applications

Application Note

*Optimal dilutions/concentrations should be determined by the researcher.

Suggested dilution	Recommended dilution
WB	1:500-1:3000
ICC/IF	Assay dependent
IHC-P	Assay dependent

Not tested in other applications.

Observed MW (kDa) 30 kDa.

Properties

Form	Liquid
Buffer	PBS
Preservative	No preservatives
Storage	Store as concentrated solution. Centrifuge briefly prior to opening vial. For short-term storage (1-2 weeks), store at 4°C. For long-term storage, aliquot and store at -20°C or below. Avoid multiple freeze-thaw cycles.
Concentration	0.5 mg/ml (Please refer to the vial label for the specific concentration.)
Immunogen	Recombinant fragment of human NDUFS3
Purification	Affinity purified by Protein A.
Conjugation	Unconjugated

Note

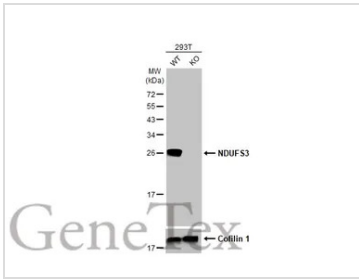
For laboratory research use only. Not for any clinical, therapeutic, or diagnostic use in humans or animals. Not for animal or human consumption.

Purchasers shall not, and agree not to enable third parties to, analyze, copy, reverse engineer or otherwise attempt to determine the structure or sequence of the product.



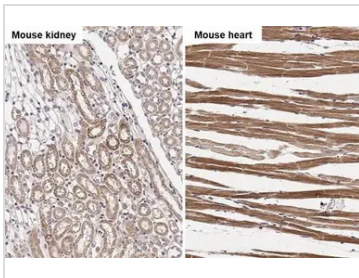
For full product information, images and publications, please visit our [website](#).

DATA IMAGES



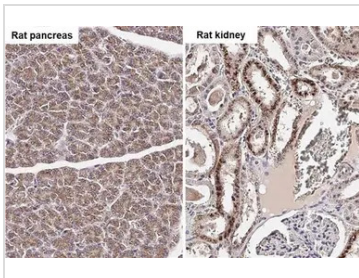
GTX638005 WB Image

Wild-type (WT) and NDUFS3 knockout (KO) 293T cell extracts (30 µg) were separated by 12% SDS-PAGE, and the membrane was blotted with NDUFS3 antibody [HL2097] (GTX638005) diluted at 1:2500. The HRP-conjugated anti-rabbit IgG antibody (GTX213110-01) was used to detect the primary antibody.



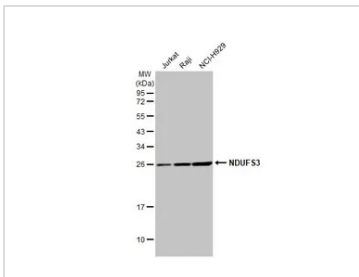
GTX638005 IHC-P Image

NDUFS3 antibody [HL2097] detects NDUFS3 protein by immunohistochemical analysis. Sample: Paraffin-embedded mouse tissues. NDUFS3 stained by NDUFS3 antibody [HL2097] (GTX638005) diluted at 1:50. Antigen Retrieval: Citrate buffer, pH 6.0, 15 min



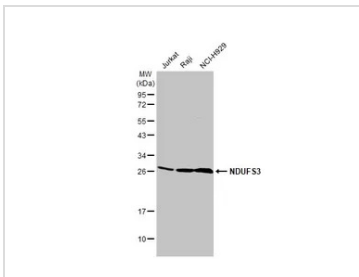
GTX638005 IHC-P Image

NDUFS3 antibody [HL2097] detects NDUFS3 protein by immunohistochemical analysis. Sample: Paraffin-embedded rat tissues. NDUFS3 stained by NDUFS3 antibody [HL2097] (GTX638005) diluted at 1:50. Antigen Retrieval: Citrate buffer, pH 6.0, 15 min



GTX638005 WB Image

Various whole cell extracts (30 µg) were separated by 12% SDS-PAGE, and the membrane was blotted with NDUFS3 antibody [HL2097] (GTX638005) diluted at 1:10000. The HRP-conjugated anti-rabbit IgG antibody (GTX213110-01) was used to detect the primary antibody.



GTX638005 WB Image

Various whole cell extracts (30 µg) were separated by 12% SDS-PAGE, and the membrane was blotted with NDUFS3 antibody [HL2097] (GTX638005) diluted at 1:2500. The HRP-conjugated anti-rabbit IgG antibody (GTX213110-01) was used to detect the primary antibody.



For full product information, images and publications, please visit our [website](http://www.genetex.com).