

IGF2 antibody [HL2132]

Cat. No. GTX638104

Host	Rabbit
Clonality	Monoclonal
Isotype	IgG
Applications	WB, ELISA
Reactivity	Human

Package
100 µl, 25 µl

Applications

Application Note

*Optimal dilutions/concentrations should be determined by the researcher.

Suggested dilution	Recommended dilution
WB	1:500-1:3000
ELISA	Assay dependent

Not tested in other applications.

Observed MW (kDa) 10 (mature form), 13/15 (big form), 20 (Pro-form) kDa.**Product Note** This antibody is specific for human IGF2 protein, and it does not cross react with human IGF1, INS-IGF2, and INS protein.

Properties

Form	Liquid
Buffer	PBS
Preservative	No preservatives
Storage	Store as concentrated solution. Centrifuge briefly prior to opening vial. For short-term storage (1-2 weeks), store at 4°C. For long-term storage, aliquot and store at -20°C or below. Avoid multiple freeze-thaw cycles.
Concentration	1 mg/ml (Please refer to the vial label for the specific concentration.)
Immunogen	Recombinant protein encompassing a sequence within the N-term region of human IGF2. The exact sequence is proprietary.
Purification	Affinity purified by Protein A.
Conjugation	Unconjugated

Note

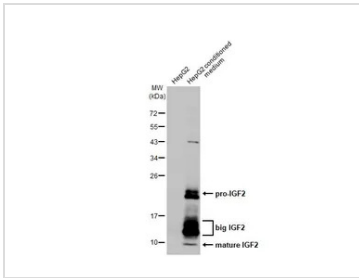
For laboratory research use only. Not for any clinical, therapeutic, or diagnostic use in humans or animals. Not for animal or human consumption.

Purchasers shall not, and agree not to enable third parties to, analyze, copy, reverse engineer or otherwise attempt to determine the structure or sequence of the product.



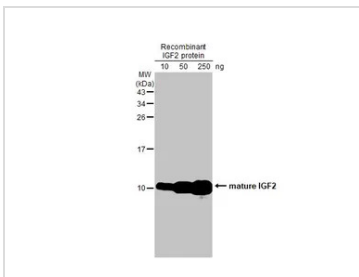
For full product information, images and publications, please visit our [website](#).

DATA IMAGES



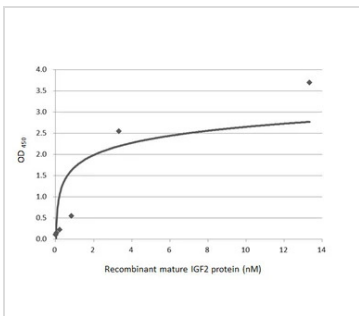
GTX638104 WB Image

HepG2 whole cell extract and conditioned medium (30 µg) were separated by 12% SDS-PAGE, and the membrane was blotted with IGF2 antibody [HL2132] (GTX638104) diluted at 1:1000. The HRP-conjugated anti-rabbit IgG antibody (GTX213110-01) was used to detect the primary antibody.



GTX638104 WB Image

Recombinant IGF2 protein were separated by 15% SDS-PAGE, and the membrane was blotted with IGF2 antibody [HL2132] (GTX638104) diluted at 1:2000. The HRP-conjugated anti-rabbit IgG antibody (GTX213110-01) was used to detect the primary antibody.



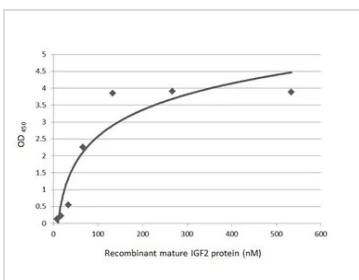
GTX638104 ELISA Image

Sandwich ELISA detection of recombinant E.coli expressed, mature recombinant human IGF2 protein using antibodies as below.

Capture: IGF2 antibody [HL2937] (GTX640321) (5 µg/mL)

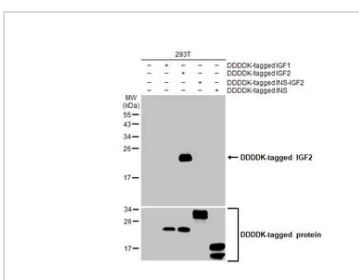
Detection: HRP-conjugated IGF2 antibody [HL2132] (GTX638104) (1 µg/mL)

Please notice that GTX638104 needs to be conjugated to HRP to function as the detection antibody when paired with GTX640321. Please contact us for custom HRP-conjugated antibody.



GTX638104 ELISA Image

Indirect ELISA analysis was performed by coating the plate with recombinant E.coli expressed, mature recombinant human IGF2 protein (533.33-8.33 nM). Coated protein was probed with IGF2 antibody [HL2132] (GTX638104) (1 µg/mL). Goat anti-rabbit IgG antibody (HRP) (GTX213110-01) (1:10000) was used to detect the bound primary antibody.



GTX638104 WB Image

Non-transfected (-) and transfected (+) 293T whole cell extracts (30 µg) were separated by 15% SDS-PAGE, and the membrane was blotted with IGF2 antibody [HL2132] (GTX638104) diluted at 1:5000. The HRP-conjugated anti-rabbit IgG antibody (GTX213110-01) was used to detect the primary antibody.



For full product information, images and publications, please visit our [website](https://www.genetex.com).