

# Pepsinogen I antibody [HL2137]

**Cat. No. GTX638109**

<b>Host</b>	Rabbit
<b>Clonality</b>	Monoclonal
<b>Isotype</b>	IgG
<b>Applications</b>	WB, ICC/IF, IHC-P, ELISA
<b>Reactivity</b>	Human, Mouse, Rat

**Package**  
100 µl, 25 µl

## Applications

### Application Note

\*Optimal dilutions/concentrations should be determined by the researcher.

Suggested dilution	Recommended dilution
WB	1:500-1:3000
ICC/IF	Assay dependent
IHC-P	Assay dependent
ELISA	Assay dependent

Not tested in other applications.

**Observed MW (kDa)** 50 kDa.

**Product Note** This antibody can recognize Pepsinogen I proteins, including PGA3, PGA4, and PGA5 proteins.

## Properties

<b>Form</b>	Liquid
<b>Buffer</b>	PBS
<b>Preservative</b>	No preservatives
<b>Storage</b>	Store as concentrated solution. Centrifuge briefly prior to opening vial. For short-term storage (1-2 weeks), store at 4°C. For long-term storage, aliquot and store at -20°C or below. Avoid multiple freeze-thaw cycles.
<b>Concentration</b>	1 mg/ml (Please refer to the vial label for the specific concentration.)
<b>Immunogen</b>	Recombinant fragment of human Pepsinogen I
<b>Purification</b>	Affinity purified by Protein A.
<b>Conjugation</b>	Unconjugated

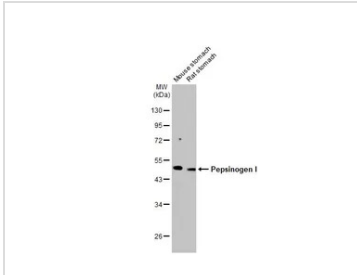


For full product information, images and publications, please visit our [website](#).

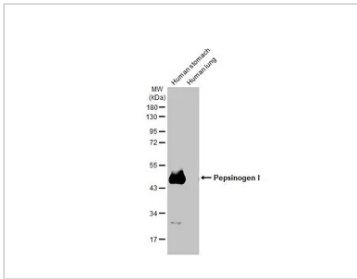
For laboratory research use only. Not for any clinical, therapeutic, or diagnostic use in humans or animals. Not for animal or human consumption.

**Note**

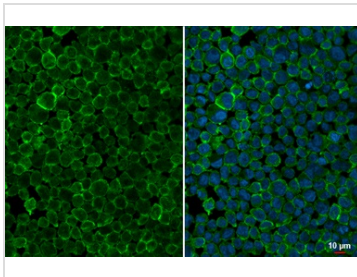
Purchasers shall not, and agree not to enable third parties to, analyze, copy, reverse engineer or otherwise attempt to determine the structure or sequence of the product.

**DATA IMAGES**

**GTX638109 WB Image**

Various tissue extracts (50 µg) were separated by 10% SDS-PAGE, and the membrane was blotted with Pepsinogen I antibody [HL2137] (GTX638109) diluted at 1:1000. The HRP-conjugated anti-rabbit IgG antibody (GTX213110-01) was used to detect the primary antibody, and the signal was developed with Trident ECL plus-Enhanced.


**GTX638109 WB Image**

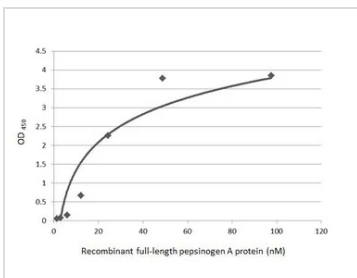
Various tissue extracts (10 µg) were separated by 10% SDS-PAGE, and the membrane was blotted with Pepsinogen I antibody [HL2137] (GTX638109) diluted at 1:1000. The HRP-conjugated anti-rabbit IgG antibody (GTX213110-01) was used to detect the primary antibody.


**GTX638109 ICC/IF Image**

Pepsinogen I antibody [HL2137] detects Pepsinogen I protein at cytoplasm by immunofluorescent analysis. Sample: THP-1 cells were fixed in 4% paraformaldehyde at RT for 15 min.

Green: Pepsinogen I stained by Pepsinogen I antibody [HL2137] (GTX638109) diluted at 1:500.

Blue: Fluoroshield with DAPI (GTX30920).


**GTX638109 ELISA Image**

Indirect ELISA analysis was performed by coating the plate with recombinant NS0 cells expressed, full-length human pepsinogen A protein (97.56-1.52 nM). Coated protein was probed with Pepsinogen I antibody [HL2137] (GTX638109) (1 µg/mL). Goat anti-rabbit IgG antibody (HRP) (GTX213110-01) (1:10000) was used to detect the bound primary antibody.



For full product information, images and publications, please visit our [website](https://www.genetex.com).