

## ADFP antibody [HL2147]

Cat. No. GTX638125

|              |                   |
|--------------|-------------------|
| Host         | Rabbit            |
| Clonality    | Monoclonal        |
| Isotype      | IgG               |
| Applications | WB, ICC/IF, IHC-P |
| Reactivity   | Human, Mouse, Rat |

Package  
100 µl, 25 µl

## Applications

## Application Note

\*Optimal dilutions/concentrations should be determined by the researcher.

| Suggested dilution | Recommended dilution |
|--------------------|----------------------|
| WB                 | Assay dependent      |
| ICC/IF             | Assay dependent      |
| IHC-P              | Assay dependent      |

Not tested in other applications.

Observed MW (kDa) 48 kDa.

## Properties

|               |  |
|---------------|--|
| Form          | Liquid   |
| Buffer        | PBS  |
| Preservative  | No preservatives   |
| Storage       | Store as concentrated solution. Centrifuge briefly prior to opening vial. For short-term storage (1-2 weeks), store at 4°C. For long-term storage, aliquot and store at -20°C or below. Avoid multiple freeze-thaw cycles. |
| Concentration | 1 mg/ml (Please refer to the vial label for the specific concentration.)   |
| Immunogen     | Recombinant fragment of human ADFP   |
| Purification  | Affinity purified by Protein A.  |
| Conjugation   | Unconjugated   |

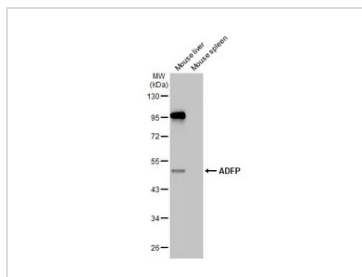
## Note

For laboratory research use only. Not for any clinical, therapeutic, or diagnostic use in humans or animals. Not for animal or human consumption.

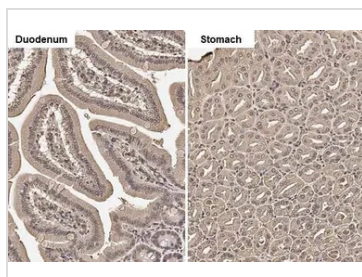
Purchasers shall not, and agree not to enable third parties to, analyze, copy, reverse engineer or otherwise attempt to determine the structure or sequence of the product.



For full product information, images and publications, please visit our [website](#).

**DATA IMAGES**

**GTX638125 WB Image**

Various tissue extracts (50 µg) were separated by 10% SDS-PAGE, and the membrane was blotted with ADFP antibody [HL2147] (GTX638125) diluted at 1:1000. The HRP-conjugated anti-rabbit IgG antibody (GTX213110-01) was used to detect the primary antibody.

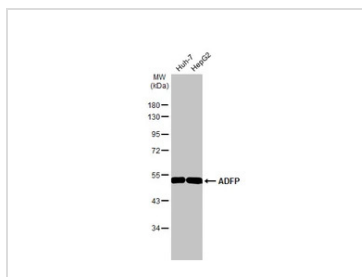

**GTX638125 IHC-P Image**

ADFP antibody [HL2147] detects ADFP protein by immunohistochemical analysis.

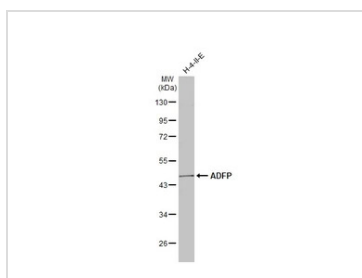
Sample: Paraffin-embedded mouse tissues.

ADFP stained by ADFP antibody [HL2147] (GTX638125) diluted at 1:100.

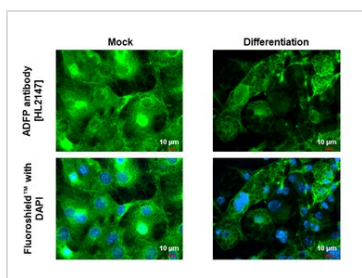
Antigen Retrieval: Citrate buffer, pH 6.0, 15 min


**GTX638125 WB Image**

Various whole cell extracts (30 µg) were separated by 10% SDS-PAGE, and the membrane was blotted with ADFP antibody [HL2147] (GTX638125) diluted at 1:1000. The HRP-conjugated anti-rabbit IgG antibody (GTX213110-01) was used to detect the primary antibody.


**GTX638125 WB Image**

Whole cell extract (30 µg) was separated by 10% SDS-PAGE, and the membrane was blotted with ADFP antibody [HL2147] (GTX638125) diluted at 1:1000. The HRP-conjugated anti-rabbit IgG antibody (GTX213110-01) was used to detect the primary antibody.


**GTX638125 ICC/IF Image**

ADFP antibody [HL2147] detects ADFP protein at lipid droplet by immunofluorescent analysis.

Sample: Mock and differentiated 3T3-L1 cells were fixed in 4% paraformaldehyde at RT for 15 min.

Green: ADFP stained by ADFP antibody [HL2147] (GTX638125) diluted at 1:500.

Blue: Fluoroshield with DAPI (GTX30920).



For full product information, images and publications, please visit our [website](https://www.genetex.com).