

Zika virus NS2B protein antibody [HL2151]

Cat. No. GTX638129

Host	Rabbit
Clonality	Monoclonal
Isotype	IgG
Applications	WB, ICC/IF
Reactivity	Zika virus

Package
100 µl, 25 µl

Applications

Application Note

*Optimal dilutions/concentrations should be determined by the researcher.

Suggested dilution	Recommended dilution
WB	1:1000-1:10000
ICC/IF	Assay dependent

Not tested in other applications.

Product Note

This antibody is specific for Zika virus NS4B protein, and it does not cross-react with NS4B protein of Japanese encephalitis virus and Dengue virus type 1/2/3/4.
This antibody was raised against the Zika virus Envelope protein (strain: H/PF/2013), and the immunogen shares 100% sequence identity with strain MR 766.

Properties

Form	Liquid
Buffer	PBS
Preservative	No preservatives
Storage	Store as concentrated solution. Centrifuge briefly prior to opening vial. For short-term storage (1-2 weeks), store at 4°C. For long-term storage, aliquot and store at -20°C or below. Avoid multiple freeze-thaw cycles.
Concentration	1 mg/ml (Please refer to the vial label for the specific concentration.)
Immunogen	Synthetic peptide of Zika virus NS2B protein. (strain:"H/PF/2013")
Purification	Affinity purified by Protein A.
Conjugation	Unconjugated

Note

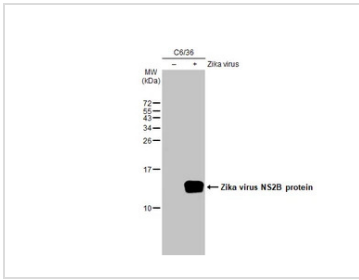
For laboratory research use only. Not for any clinical, therapeutic, or diagnostic use in humans or animals. Not for animal or human consumption.

Purchasers shall not, and agree not to enable third parties to, analyze, copy, reverse engineer or otherwise attempt to determine the structure or sequence of the product.



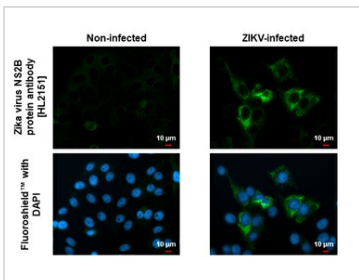
For full product information, images and publications, please visit our [website](#).

DATA IMAGES



GTX638129 WB Image

Non-infected (-) and infected (+) C6/36 whole cell extracts (30 µg) were separated by 15% SDS-PAGE, and the membrane was blotted with Zika virus NS2B protein antibody [HL2151] (GTX638129) diluted at 1:5000. The HRP-conjugated anti-rabbit IgG antibody (GTX213110-01) was used to detect the primary antibody.



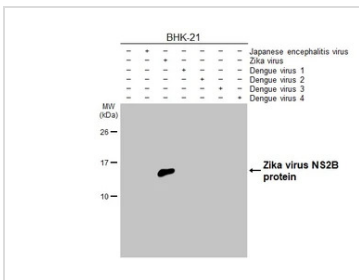
GTX638129 ICC/IF Image

Immunofluorescent analysis of Zika virus infected cells using Zika virus NS2B protein antibody [HL2151] antibody (GTX638129).

Sample: Zika virus infected cells slide.

Green: Zika virus NS2B protein antibody [HL2151] antibody (GTX638129) diluted at 1:100.

Blue: Fluoroshield with DAPI (GTX30920).



GTX638129 WB Image

Non-infected (-) and infected (+) BHK-21 whole cell extracts (5 µg) were separated by 15% SDS-PAGE, and the membrane was blotted with Zika virus NS2B protein antibody [HL2151] (GTX638129) diluted at 1:1000. The HRP-conjugated anti-rabbit IgG antibody (GTX213110-01) was used to detect the primary antibody.



For full product information, images and publications, please visit our [website](#).