

Iba1 antibody [HL1880-RT]

Cat. No. GTX638148

Host	Rat
Clonality	Monoclonal
Isotype	IgG
Applications	WB, ICC/IF, IHC-P, IHC-Fr
Reactivity	Human, Mouse, Rat

References (4)

Package

100 µl, 25 µl

Applications

Application Note

*Optimal dilutions/concentrations should be determined by the researcher.

Suggested dilution	Recommended dilution
WB	1:500-1:3000
ICC/IF	Assay dependent
IHC-P	1:100-1:1000
IHC-Fr	Assay dependent

Not tested in other applications.

Observed MW (kDa)	17 kDa.
--------------------------	---------

Product Note	Based on sequence homology, this antibody is predicted to recognize Iba-1 isoforms 1-3.
---------------------	---

Properties

Form	Liquid
Buffer	PBS
Preservative	No preservatives
Storage	Store as concentrated solution. Centrifuge briefly prior to opening vial. For short-term storage (1-2 weeks), store at 4°C. For long-term storage, aliquot and store at -20°C or below. Avoid multiple freeze-thaw cycles.
Concentration	1 mg/ml (Please refer to the vial label for the specific concentration.)
Immunogen	Recombinant fragment of human Iba1
Purification	Affinity purified by Protein A.
Conjugation	Unconjugated



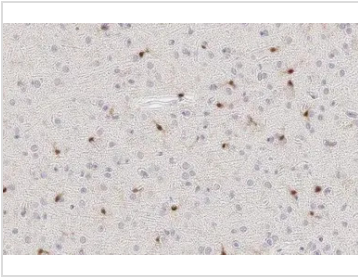
For full product information, images and publications, please visit our [website](#).

For laboratory research use only. Not for any clinical, therapeutic, or diagnostic use in humans or animals. Not for animal or human consumption.

Note

Purchasers shall not, and agree not to enable third parties to, analyze, copy, reverse engineer or otherwise attempt to determine the structure or sequence of the product.

DATA IMAGES

**GTX638148 IHC-P Image**

Iba1 antibody [HL1880-RT] detects Iba 1 protein by immunohistochemical analysis.

Sample: Paraffin-embedded mouse brain.

Green: Iba 1 stained by Iba1 antibody [HL1880-RT] (GTX638148) diluted at 1:100.

Antigen Retrieval: Citrate buffer, pH 6.0, 15 min

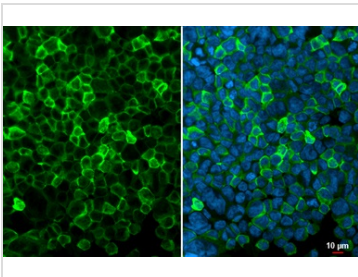
**GTX638148 IHC-P Image**

Iba1 antibody [HL1880-RT] detects Iba 1 protein by immunohistochemical analysis.

Sample: Paraffin-embedded rat brain.

Green: Iba 1 stained by Iba1 antibody [HL1880-RT] (GTX638148) diluted at 1:100.

Antigen Retrieval: Citrate buffer, pH 6.0, 15 min

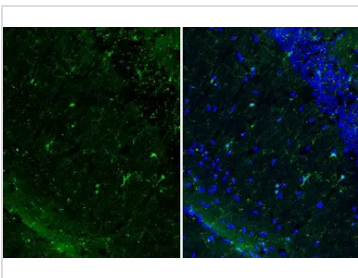
**GTX638148 ICC/IF Image**

Iba1 antibody [HL1880-RT] detects Iba1 protein at cell membrane by immunofluorescent analysis.

Sample: THP-1 cells were fixed in 4% paraformaldehyde at RT for 15 min.

Green: Iba1 stained by Iba1 antibody [HL1880-RT] (GTX638148) diluted at 1:500.

Blue: Fluoroshield with DAPI (GTX30920).

**GTX638148 IHC-Fr Image**

Iba1 antibody [HL1880-RT] detects Iba1 protein at cell membrane and cytoplasm by immunohistochemical analysis.

Sample: Frozen-sectioned mouse brain.

Green: Iba1 stained by Iba1 antibody [HL1880-RT] (GTX638148) diluted at 1:100.

Blue: Fluoroshield with DAPI (GTX30920).



For full product information, images and publications, please visit our [website](#).