

WNK1 antibody [HL2184]

Cat. No. GTX638188

| | |
|--------------|-------------------|
| Host | Rabbit |
| Clonality | Monoclonal |
| Isotype | IgG |
| Applications | WB, ICC/IF, IHC-P |
| Reactivity | Human, Mouse, Rat |

Package
100 µl, 25 µl

Applications

Application Note

*Optimal dilutions/concentrations should be determined by the researcher.

| Suggested dilution | Recommended dilution |
|--------------------|----------------------|
| WB | Assay dependent |
| ICC/IF | Assay dependent |
| IHC-P | Assay dependent |

Not tested in other applications.

Observed MW (kDa) 300 kDa.

Properties

| | |
|---------------|--|
| Form | Liquid |
| Buffer | PBS |
| Preservative | No preservatives |
| Storage | Store as concentrated solution. Centrifuge briefly prior to opening vial. For short-term storage (1-2 weeks), store at 4°C. For long-term storage, aliquot and store at -20°C or below. Avoid multiple freeze-thaw cycles. |
| Concentration | 2 mg/ml (Please refer to the vial label for the specific concentration.) |
| Immunogen | Recombinant fragment of human WNK1 |
| Purification | Affinity purified by Protein A. |
| Conjugation | Unconjugated |

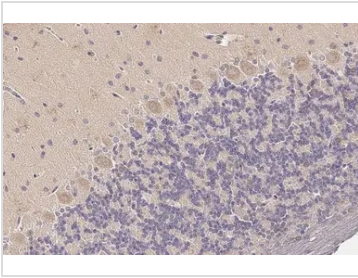
Note

For laboratory research use only. Not for any clinical, therapeutic, or diagnostic use in humans or animals. Not for animal or human consumption.

Purchasers shall not, and agree not to enable third parties to, analyze, copy, reverse engineer or otherwise attempt to determine the structure or sequence of the product.



For full product information, images and publications, please visit our [website](#).

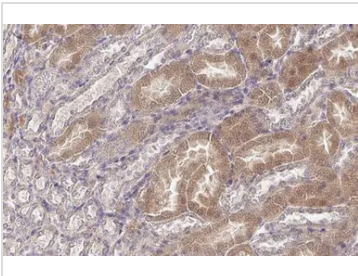
DATA IMAGES

GTK638188 IHC-P Image

WNK1 antibody [HL2184] detects WNK1 protein at cytoplasm by immunohistochemical analysis.

Sample: Paraffin-embedded rat cerebellum.

WNK1 stained by WNK1 antibody [HL2184] (GTK638188) diluted at 1:50.

Antigen Retrieval: Citrate buffer, pH 6.0, 15 min

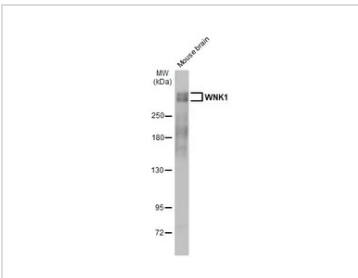

GTK638188 IHC-P Image

WNK1 antibody [HL2184] detects WNK1 protein at cytoplasm by immunohistochemical analysis.

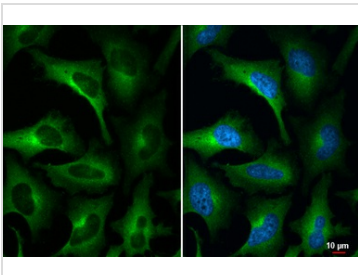
Sample: Paraffin-embedded mouse kidney.

WNK1 stained by WNK1 antibody [HL2184] (GTK638188) diluted at 1:50.

Antigen Retrieval: Citrate buffer, pH 6.0, 15 min


GTK638188 WB Image

Mouse tissue extract (50 µg) was separated by 5% SDS-PAGE, and the membrane was blotted with WNK1 antibody [HL2184] (GTK638188) diluted at 1:2000. The HRP-conjugated anti-rabbit IgG antibody (GTK213110-01) was used to detect the primary antibody.

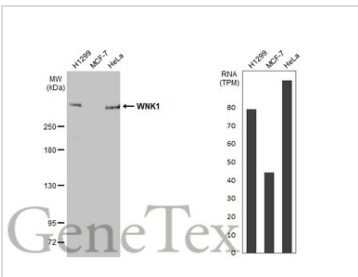

GTK638188 ICC/IF Image

WNK1 antibody [HL2184] detects WNK1 protein at cytoplasm by immunofluorescent analysis.

Sample: HeLa cells were fixed in 4% paraformaldehyde at RT for 15 min.

Green: WNK1 stained by WNK1 antibody [HL2184] (GTK638188) diluted at 1:500.

Blue: Fluoroshield with DAPI (GTK30920).


GTK638188 WB Image

Various whole cell extracts (30 µg) were separated by 5% SDS-PAGE, and the membrane was blotted with WNK1 antibody [HL2184] (GTK638188) diluted at 1:2000. The HRP-conjugated anti-rabbit IgG antibody (GTK213110-01) was used to detect the primary antibody. Corresponding RNA expression data for the same cell lines are based on Human Protein Atlas program.



For full product information, images and publications, please visit our [website](https://www.genetex.com).