

## FOXO3A antibody [HL2190]

**Cat. No. GTX638194**

<b>Host</b>	Rabbit
<b>Clonality</b>	Monoclonal
<b>Isotype</b>	IgG
<b>Applications</b>	WB
<b>Reactivity</b>	Human, Mouse

**Package**  
100 µl, 25 µl

## Applications

**Application Note**

\*Optimal dilutions/concentrations should be determined by the researcher.

Suggested dilution	Recommended dilution
--------------------	----------------------

WB	1:500-1:3000
----	--------------

Not tested in other applications.

<b>Observed MW (kDa)</b>	82-95 kDa.
--------------------------	------------

## Properties

<b>Form</b>	Liquid
-------------	--------

<b>Buffer</b>	PBS
---------------	-----

<b>Preservative</b>	No preservatives
---------------------	------------------

<b>Storage</b>	Store as concentrated solution. Centrifuge briefly prior to opening vial. For short-term storage (1-2 weeks), store at 4°C. For long-term storage, aliquot and store at -20°C or below. Avoid multiple freeze-thaw cycles.
----------------	--

<b>Concentration</b>	2 mg/ml (Please refer to the vial label for the specific concentration.)
----------------------	--

<b>Immunogen</b>	Carrier-protein conjugated synthetic peptide encompassing a sequence within the C-terminus region of human FOXO3A. The exact sequence is proprietary.
------------------	---

<b>Purification</b>	Affinity purified by Protein A.
---------------------	---------------------------------

<b>Conjugation</b>	Unconjugated
--------------------	--------------

**Note**

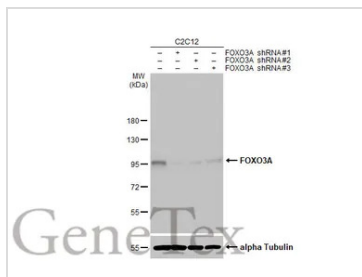
For laboratory research use only. Not for any clinical, therapeutic, or diagnostic use in humans or animals. Not for animal or human consumption.

Purchasers shall not, and agree not to enable third parties to, analyze, copy, reverse engineer or otherwise attempt to determine the structure or sequence of the product.



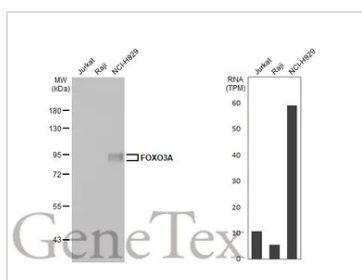
For full product information, images and publications, please visit our [website](#).

DATA IMAGES



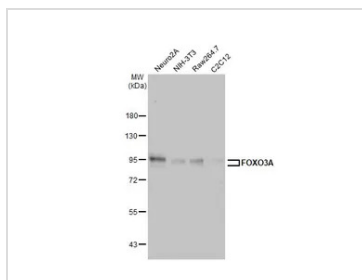
**GTX638194 WB Image**

Non-transfected (-) and transfected (+) C2C12 whole cell extracts (30 µg) were separated by 7.5% SDS-PAGE, and the membrane was blotted with FOXO3A antibody [HL2190] (GTX638194) diluted at 1:1000. The HRP-conjugated anti-rabbit IgG antibody (GTX213110-01) was used to detect the primary antibody, and the signal was developed with Trident ECL plus-Enhanced.



**GTX638194 WB Image**

Various whole cell extracts (30 µg) were separated by 7.5% SDS-PAGE, and the membrane was blotted with FOXO3A antibody [HL2190] (GTX638194) diluted at 1:1000. The HRP-conjugated anti-rabbit IgG antibody (GTX213110-01) was used to detect the primary antibody. Corresponding RNA expression data for the same cell lines are based on Human Protein Atlas program.



**GTX638194 WB Image**

Various whole cell extracts (30 µg) were separated by 7.5% SDS-PAGE, and the membrane was blotted with FOXO3A antibody [HL2190] (GTX638194) diluted at 1:500. The HRP-conjugated anti-rabbit IgG antibody (GTX213110-01) was used to detect the primary antibody, and the signal was developed with Trident ECL plus-Enhanced.



For full product information, images and publications, please visit our [website](http://www.genetex.com).