

# NeuN antibody [HL2194]

**Cat. No. GTX638198**

<b>Host</b>	Rabbit
<b>Clonality</b>	Monoclonal
<b>Isotype</b>	IgG
<b>Applications</b>	ICC/IF, IHC-P, IHC-Fr
<b>Reactivity</b>	Mouse, Rat

## Package

100 µl, 25 µl

## Applications

### Application Note

\*Optimal dilutions/concentrations should be determined by the researcher.

Suggested dilution	Recommended dilution
ICC/IF	1:100-1:1000
IHC-P	1:100-1:1000
IHC-Fr	1:100-1:1000

Not tested in other applications.

## Properties

<b>Form</b>	Liquid
<b>Buffer</b>	PBS
<b>Preservative</b>	No preservatives
<b>Storage</b>	Store as concentrated solution. Centrifuge briefly prior to opening vial. For short-term storage (1-2 weeks), store at 4°C. For long-term storage, aliquot and store at -20°C or below. Avoid multiple freeze-thaw cycles.
<b>Concentration</b>	1 mg/ml (Please refer to the vial label for the specific concentration.)
<b>Immunogen</b>	Carrier-protein conjugated synthetic peptide encompassing a sequence within the N-terminus region of human NeuN. The exact sequence is proprietary.
<b>Purification</b>	Affinity purified by Protein A.
<b>Conjugation</b>	Unconjugated

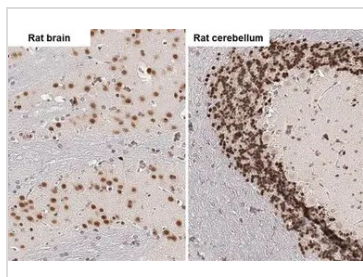
### Note

For laboratory research use only. Not for any clinical, therapeutic, or diagnostic use in humans or animals. Not for animal or human consumption.

Purchasers shall not, and agree not to enable third parties to, analyze, copy, reverse engineer or otherwise attempt to determine the structure or sequence of the product.



For full product information, images and publications, please visit our [website](#).

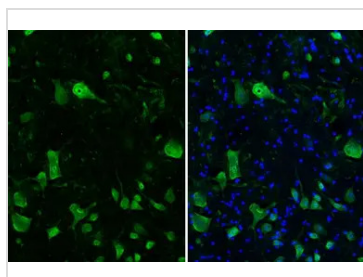
**DATA IMAGES**

**GTx638198 IHC-P Image**

NeuN antibody [HL2194] detects NeuN protein by immunohistochemical analysis.

Sample: Paraffin-embedded rat tissues.

NeuN stained by NeuN antibody [HL2194] (GTx638198) diluted at 1:100.

Antigen Retrieval: Citrate buffer, pH 6.0, 15 min

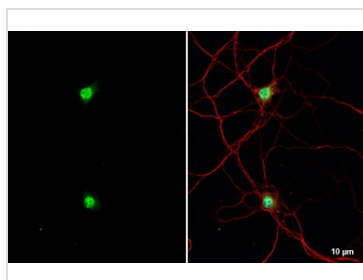

**GTx638198 IHC-Fr Image**

NeuN antibody [HL2194] detects NeuN protein at cytoplasm and nucleus by immunohistochemical analysis.

Sample: Frozen-sectioned mouse spinal cord.

Green: NeuN stained by NeuN antibody [HL2194] (GTx638198) diluted at 1:100.

Blue: Fluoroshield with DAPI (GTx30920).


**GTx638198 ICC/IF Image**

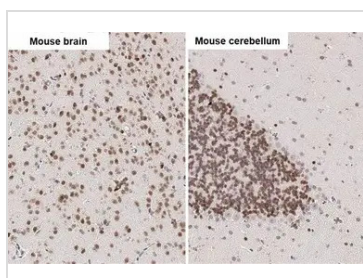
NeuN antibody [HL2194] detects NeuN protein at nucleus by immunofluorescent analysis.

Sample: DIV9 rat E18 primary hippocampal neuron and glia cells were fixed in 4% paraformaldehyde at RT for 15 min.

Green: NeuN stained by NeuN antibody [HL2194] (GTx638198) diluted at 1:500.

Red: Tau, an axon marker, stained by Tau antibody [GT287] (GTx634809) diluted at 1:500.

Blue: Fluoroshield with DAPI (GTx30920).


**GTx638198 IHC-P Image**

NeuN antibody [HL2194] detects NeuN protein by immunohistochemical analysis.

Sample: Paraffin-embedded mouse tissues.

NeuN stained by NeuN antibody [HL2194] (GTx638198) diluted at 1:100.

Antigen Retrieval: Citrate buffer, pH 6.0, 15 min



For full product information, images and publications, please visit our [website](https://www.genetex.com).