

Cytochrome C antibody [HL2205]

Cat. No. GTX638209

| | |
|---------------------|------------------------|
| Host | Rabbit |
| Clonality | Monoclonal |
| Isotype | IgG |
| Applications | WB, ICC/IF, IHC-P |
| Reactivity | Human, Mouse, Rat, Cat |

Package
100 µl, 25 µl

Applications

Application Note

*Optimal dilutions/concentrations should be determined by the researcher.

| Suggested dilution | Recommended dilution |
|--------------------|----------------------|
| WB | Assay dependent |
| ICC/IF | Assay dependent |
| IHC-P | Assay dependent |

Not tested in other applications.

Observed MW (kDa) 14 kDa.

Properties

| | |
|----------------------|--|
| Form | Liquid |
| Buffer | PBS |
| Preservative | No preservative |
| Storage | Store as concentrated solution. Centrifuge briefly prior to opening vial. For short-term storage (1-2 weeks), store at 4°C. For long-term storage, aliquot and store at -20°C or below. Avoid multiple freeze-thaw cycles. |
| Concentration | 2 mg/ml (Please refer to the vial label for the specific concentration.) |
| Immunogen | Full length human Cytochrome C recombinant protein |
| Purification | Affinity purified by Protein A. |
| Conjugation | Unconjugated |

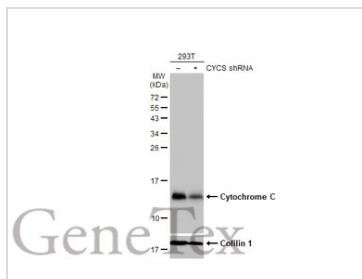
Note

For laboratory research use only. Not for any clinical, therapeutic, or diagnostic use in humans or animals. Not for animal or human consumption.

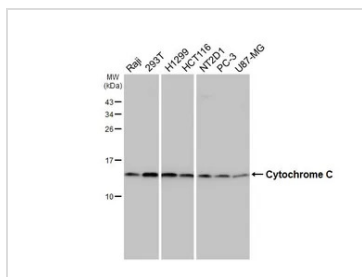
Purchasers shall not, and agree not to enable third parties to, analyze, copy, reverse engineer or otherwise attempt to determine the structure or sequence of the product.



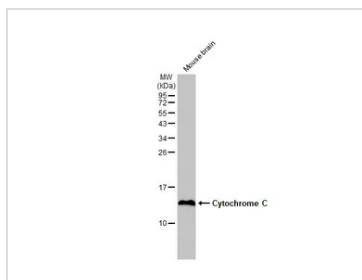
For full product information, images and publications, please visit our [website](#).

DATA IMAGES

GTX638209 WB Image

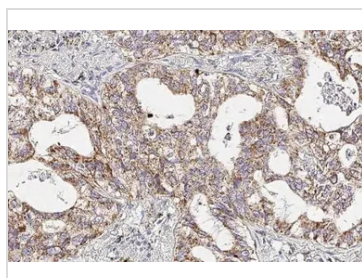
Non-transfected (–) and transfected (+) 293T whole cell extracts (30 µg) were separated by 15% SDS-PAGE, and the membrane was blotted with Cytochrome C antibody [HL2205] (GTX638209) diluted at 1:1000. The HRP-conjugated anti-rabbit IgG antibody (GTX213110-01) was used to detect the primary antibody.


GTX638209 WB Image

Various whole cell extracts (30 µg) were separated by 15% SDS-PAGE, and the membrane was blotted with Cytochrome C antibody [HL2205] (GTX638209) diluted at 1:1000. The HRP-conjugated anti-rabbit IgG antibody (GTX213110-01) was used to detect the primary antibody.


GTX638209 WB Image

Mouse tissue extract (50 µg) was separated by 15% SDS-PAGE, and the membrane was blotted with Cytochrome C antibody [HL2205] (GTX638209) diluted at 1:2000. The HRP-conjugated anti-rabbit IgG antibody (GTX213110-01) was used to detect the primary antibody.

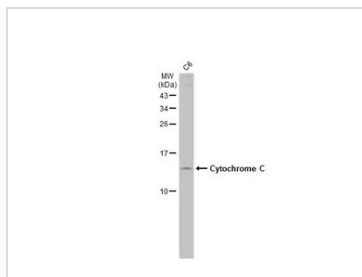

GTX638209 IHC-P Image

Cytochrome C antibody [HL2205] detects Cytochrome C protein at mitochondria by immunohistochemical analysis.

Sample: Paraffin-embedded human lung cancer.

Cytochrome C stained by Cytochrome C antibody [HL2205] (GTX638209) diluted at 1:100.

Antigen Retrieval: Citrate buffer, pH 6.0, 15 min


GTX638209 WB Image

Whole cell extract (50 µg) was separated by 15% SDS-PAGE, and the membrane was blotted with Cytochrome C antibody [HL2205] (GTX638209) diluted at 1:1000. The HRP-conjugated anti-rabbit IgG antibody (GTX213110-01) was used to detect the primary antibody, and the signal was developed with Trident ECL plus-Enhanced.



For full product information, images and publications, please visit our [website](https://www.genetex.com).